

# 奥塔哥大学 大一文凭课程



对于刚刚错过大学入学机会的学生来说，奥塔哥大学的大一文凭课程能够实现从高中到本科学历的过渡。该文凭课程相当于本科生第一年的学习。成功完成该文凭的学生将能够直升奥塔哥大学相关专业第二年的本科课程。

## 为什么选择奥塔哥大学？

奥塔哥大学成立于1869年。作为新西兰的第一所大学，其教学和研究质量获得了广泛的国际认可。它是来自新西兰国内和全球各地的学生的首选。

## 为什么选择奥塔哥大一文凭课程？

我们的文凭课程遵循精心设计的结构形式，学生可以获得高度的支持，在专注的学习环境中进行学习。

这些文凭将新西兰学历架构 (NZQF) 中的5级桥梁课程与所选文凭学科的本科大一课程相结合。

我们还在该文凭的所有桥梁课程中融入了毛利知识和太平洋岛裔视角，这为所有学生的继续教育和未来就业建立了一个健全的文化背景。

这些文凭的课程设计旨在创建学习社区，让学生能够在文凭阶段与同学们一起学习，为升入本科第二年共同努力。

该文凭课程目前可选文科、商科和理科（待监管部门批准）。教学时间为两个13周的学期加上一个考试期，与大学的正常学年保持一致。

## 文凭课程入学要求

国家	雅思 (IELTS)	入学要求
中国	雅思 5.5 (5)	高三完成，平均分70%
香港地区	雅思 5.5 (5)	香港中学文凭考试 (HKDSE)：4科共8分（仅限A类）并达到第3级
马来西亚	雅思 5.5 (5)	马来西亚高等教育文凭 (STPM) 中取得2门相关学科及格；或华文独立中学统一考试 (UEC) 中取得相关学科2个B和2个C的成绩
越南	雅思 5.5 (5)	12年级：分数达到6.5/10，并在越南全国高中毕业考试中获得通过
泰国	雅思 5.5 (5)	中学6年级 (Matayom 6) 或12年级：分数达到2.8/4.0
国际文凭课程 (IB)		22
剑桥国际课程 (Cambridge)		普通教育高级证书 (A Levels) 分数达到6



顶尖的1%

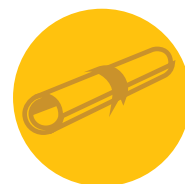
世界排名前1%的大学 (QS世界大学排名)

95%

95%的毕业生在毕业后获得工作或继续进修的机会 (奥塔哥毕业生意见调研)



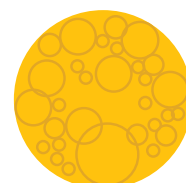
拥有国际学生最高满意度的新西兰大学 (ISB 国际学生晴雨表)



在全国教育卓越奖中取得了无与伦比的成绩：7项最高奖得主



最高国际质量评级



200多个本科和研究生项目可选

## 课程结构

所有学生必修课：

- PTWY101和102大学英语技能1和2
- PTWY103大学必备学术技能
- PTWY104新西兰文化认知

文科文凭学生必修课：

- PTWY120新西兰当代文学
- PTWY121历史世界：国家建设
- PTWY122当代世界：我们的挑战
- 附加另外3门文学学士一年级课程（100级课程）

商科文凭学生必修课：

- PTWY110商务数学
- PTWY111经济学原理
- PTWY112基本商业金融
- 附加另外3门商学学士一年级课程（100级课程）

## 奖学金和费用

我们欢迎文凭申请人申请奥塔哥大学的桥梁课程奖学金：  
[otago.ac.nz/study/scholarships/database/otago833449.html](http://otago.ac.nz/study/scholarships/database/otago833449.html)

学费和杂费	NZD
文科文凭	32,281
商科文凭	34,225
学生服务费	1,065.75
医疗和旅游保险	不定——请以您的录取通知书为准
食宿和日常开销	每年\$18,000 - \$20,000 新西兰元
寄宿家庭安置费（2023）	399
寄宿家庭住宿费（2023）	每周\$350*新西兰元

\*如有特殊膳食需求，请访问我校官方网站以查看相关收费详情。

所有信息可能会有变动。所有费用已包含15%的新西兰商品和服务税（GST）。

学生服务费包括健身房会费、校园无线上网、以及享用奥塔哥大学提供的所有服务和设施。

有关费用的重要提示：以上费用仅供参考。除非另有说明，上述费用预估基于平均全日制课程，并适用于课程开始的年份。最终费用将取决于学生所选择的具体课程，并可能与上述预估不同。在完成报名注册后，您将收到一张含有总应缴费用的发票。如果发票上的费用与上述预估不同，我们将向您收取或退还差额。



## 开学日期和其他关键日期

大一文凭课程每年有一次开学，开学时间是2月份。  
境外的国际学生需要在12月1日前递交申请，为学生签证审理留出充足的时间。

## 文凭课程学生的住宿选择

大学欢迎文凭课程学生选择以下住宿方式：

- 奥塔哥大学学生宿舍
- 奥塔哥大学管理的寄宿家庭

境外的国际学生需要在12月1日前提交学生宿舍申请。  
请访问网站[otago.ac.nz/accommodation/international-students/index.html](http://otago.ac.nz/accommodation/international-students/index.html)获取更多信息。

## 准备好申请了吗？

请联系我们递交申请：  
[pathways.admissions@otago.ac.nz](mailto:pathways.admissions@otago.ac.nz)

如您是教育顾问（中介），并已准备好递交申请，  
请发邮件至：[pathways.admissions@otago.ac.nz](mailto:pathways.admissions@otago.ac.nz)  
获取申请协助。



## 如需了解更多信息，请联系：

桥梁课程和语言中心  
PO Box 56, Dunedin 9054, New Zealand  
电话 +64 3 479 5250  
传真 + 64 3 479 5251  
电子邮件：[pathways.admissions@otago.ac.nz](mailto:pathways.admissions@otago.ac.nz)  
[otago.ac.nz/pathway](http://otago.ac.nz/pathway)



# The University of Otago English Language Centre | Te Puna o te Kī

The University of Otago English Language Centre | Te Puna o te Kī is located in a modern and comfortable building on the campus of New Zealand's oldest university. The English Language Centre delivers a range of English-language programmes, as well as pathway programmes leading to further study.

Five levels of tuition in General English are offered, from Elementary to Advanced. The communicative method of teaching is used; the lessons are learner-centred and the materials reflect a current New Zealand context. The average class has 14 students and a full-time course consists of 23 hours a week (20 hours a week online). At the completion of a programme, each student receives a certificate and a report detailing their achievement.

## Courses

- General English and English for Academic Purposes.
- IELTS, NZ Studies.
- Non IELTS pathways to Foundation Studies Certificate.
- English for Otago (satisfies the English-language requirements for admission to most undergraduate or postgraduate programmes at Otago).
- Short-course groups providing English for specific purposes.



## Special Features

- A registered test centre for IELTS and OET examinations.
- Diverse cultures and nationalities.
- Comprehensive introduction to study and living in Dunedin.
- Student ID card – giving access to University of Otago resources including information services, 24-hour computer suites, student health, clubs and societies, the gymnasium and discounts on shopping, entertainment and travel.
- Internet and email access, an intranet and student café.
- Professional student support officers provide assistance with any questions and visa issues.
- Accommodation options – homestay or flatting.

## 2024 Fees

General English tuition (4 -11 weeks)	NZ\$481.95 per week
General English tuition (12 + weeks)	NZ\$450.45 per week
English for Otago	NZ\$5,999
Student services	NZ\$26.25 per week
Homestay placement (2023)	NZ\$399
Homestay (2023)	NZ\$350 per week*
* Please refer to website for special dietary requirements rates.	
Medical and travel insurance (depends on length of stay)	Variable
Accommodation, food and expenses	NZ\$18,000–20,000 per year

All information including dates and fees are subject to change. All fees are inclusive of the NZ GST rate of 15%.

## For further information contact:

Pathway and English Language Centre,  
PO Box 56, Dunedin 9054, New Zealand

Tel 64 3 479 5250

Fax 64 3 479 5251

Email [pathways.admissions@otago.ac.nz](mailto:pathways.admissions@otago.ac.nz)

[otago.ac.nz/pathway](http://otago.ac.nz/pathway)



[www.facebook.com/  
OtagoInternationalOffice](https://www.facebook.com/OtagoInternationalOffice)



# The University of Otago Pathway | Te Huarahi

University of Otago Pathway | Te Huarahi offers a foundation studies programme of two 13-week semesters. Students may study one of the four academic streams which align with the four University of Otago academic divisions: Business/Commerce, Health Sciences, Arts/Humanities, and Science/Applied Science/Life Science.

Students who successfully complete the 10-paper, 8-month programme are awarded the Foundation Studies Certificate. This certificate guarantees students entry to their chosen University of Otago first-year course and is recognised by all New Zealand universities as an entrance qualification.

## Special Features

- Three intakes each year: February to October; June to February and October to June.
- Health Sciences students start in either February or June.
- Lectures and laboratories are held on campus in world-class facilities alongside undergraduate classes.
- Foundation Studies Certificate tutorials are taught in a dedicated, state-of-the-art University building situated on the University campus.
- Maximum tutorial class size is 18 students.
- Weekly one-on-one consultations are a feature of the programme.
- Pathway students consistently outperform other students in their first year of university.
- A six-week Bridging Programme which is designed to increase students' chances of success in the Foundation Studies Certificate programme is available immediately prior to each Pathway intake.
- Domestic and international students are integrated in all on-campus classes. Students in the Pathway programme are offered full student support services, and a comprehensive orientation.
- A student ID card gives students access to University of Otago resources including libraries, 24-hour computer suites, modern gymnasias at Unipol, Student Health, Clubs and Societies, and student cafés. It also provides discounts on shopping, entertainment and travel.
- A homestay placement service arranges quality homestay accommodation for all students.
- Free airport pickup for homestay students.

## 2024 Fees

### Fees:

Tuition (Commerce/Arts)	NZ\$28,206
Tuition (Applied Science/Health Sciences/Life Science)	NZ\$29,337
Student services fee	NZ\$1,065.75
Bridging programme	NZ\$3,066
Student services fee	NZ\$159.86
Health and travel insurance (2023)	NZ\$562.50-\$750 per year
Accommodation, food and expenses	NZ\$18,000-20,000 per year
Homestay placement (2023)	NZ\$399
Homestay (2023)	NZ\$350 per week*

\* Please refer to website for special dietary requirements rates.

### Intakes:

26 February	All streams
24 June	All streams
21 October	All streams (except Health Sciences)

## For further information contact:

Pathway and English Language Centre,  
PO Box 56, Dunedin 9054, New Zealand

Tel 64 3 479 5250

Fax 64 3 479 5251

Email [pathways.admissions@otago.ac.nz](mailto:pathways.admissions@otago.ac.nz)

[otago.ac.nz/pathway](http://otago.ac.nz/pathway)



[www.facebook.com/OtagoInternationalOffice](https://www.facebook.com/OtagoInternationalOffice)



Before students study English for Otago papers, they should have an offer of place from the International Office at the University of Otago to be eligible for admission to an undergraduate or postgraduate programme.

Students are strongly advised to contact the International Office by email: [international.marketing@otago.ac.nz](mailto:international.marketing@otago.ac.nz) to start the admission process.

## FREQUENTLY ASKED QUESTIONS

How long is the programme?

Both English for Otago courses are 12 weeks in duration.

What does the entrance test assess?

Academic reading, writing, and listening.

Will I get a refund if I don't pass the entrance test?

New students will receive a full credit of tuition fees less the administration fee.

Current students will be expected to return to a Language Centre class.

Other students will have a credit of fees subject to the Fee Policy.

This policy is located on our website:

[otago.ac.nz/uolcfy/about/policies](https://otago.ac.nz/uolcfy/about/policies)

What are my options if I don't pass the entrance test?

- Study English at the University of Otago Language Centre and prepare for an IELTS or TOEFL examination; or
- Study English at the University of Otago Language Centre until the next English for Otago course is offered at the level you require; or
- Go to the University of Otago Foundation Year if you want to study at undergraduate level.

If I pass English for Otago how long is the result valid for?

The result is valid for two years.

Is English for Otago accepted by other institutions?

Otago Polytechnic accepts English for Otago.

For questions regarding admission to undergraduate or postgraduate programmes please refer to the International Office at the University of Otago:

Web [otago.ac.nz/international](https://otago.ac.nz/international)

Email [international.marketing@otago.ac.nz](mailto:international.marketing@otago.ac.nz)

## ATTENDANCE AND REFUND POLICIES

Attendance, fees and refund policies are located at:

[otago.ac.nz/uolcfy/about/policies](https://otago.ac.nz/uolcfy/about/policies)

## FEES 2023

Tuition fees are NZ\$5,999

All fees are inclusive of the NZ GST rate of 15%.

Fees are subject to change. All other fees are located on our website:

[otago.ac.nz/uolcfy](https://otago.ac.nz/uolcfy)

## ENGLISH REQUIREMENTS FOR OTAGO

There are no 'special examinations' for students who fail English for Otago. Students must achieve a 'C' grade to pass either English for Otago course. In achieving this grade, students meet the English language requirements for admission to most undergraduate or postgraduate programmes at Otago. Some programmes require an IELTS of 7.0 or 7.5.

Please email the International Office for details:

[international.marketing@otago.ac.nz](mailto:international.marketing@otago.ac.nz)

## DATES 2023

Term 1 2023: 13 March - 9 June Price \$5999

Complete and pass English for Otago in time to begin study in the second semester at the University of Otago 2023.

Recess week: 10-14 April (Easter break)

Exam week 12-16 June (exam likely on 12 June)

Term 2 2023 (online): 10 July - 6 October Price \$5999

Complete and pass English for Otago in time to begin study in the first semester at the University of Otago 2024.

Recess week 14-18 June

Exam week 9-13 October (exam likely on 9 Oct.)

Term 3 2023-24: 16 Oct - 19 Jan Price \$5999

Complete and pass English for Otago in time to begin study in the first semester at the University of Otago 2024.

Recess 16 Dec - 2 Jan (Xmas / New Year)

Exam week 22 Jan (exam likely on Monday)



UNIVERSITY OF OTAGO ENGLISH LANGUAGE CENTRE

# English for Otago

FOR UNDERGRADUATE AND POSTGRADUATE STUDENTS



To help students to achieve their goal of studying at Otago, the University of Otago Language Centre offers a pathway for students to meet the English language requirements for undergraduate or postgraduate study. English for Otago also provides excellent preparation for academic study at the University of Otago.



To apply complete the online application form on our website:

[otago.ac.nz/uolcfy/apply](https://otago.ac.nz/uolcfy/apply)

If you need assistance or advice, please contact us:

[pathways.admissions@otago.ac.nz](mailto:pathways.admissions@otago.ac.nz)

There are two courses available – one for students who want to study at undergraduate level and one for students who want to study at postgraduate level. The courses start in February and October for both undergraduate and postgraduate levels.

## ENGLISH FOR OTAGO

### ENGLISH FOR UNDERGRADUATE ACADEMIC PURPOSES (EUAP)



#### ADMISSION

This is an intensive course requiring a high entry standard. Students are required to pass the entrance test in order to enter English for Otago or have achieved the following results within two years of the start date of the course:

- IELTS – 5.5 (no band below 5.0)
- IELTS Online also accepted
- TOEFL iBT – 70 (writing 15)
- TOEFL iBT Home Edition\*
- Paper based TOEFL – 525 (TWE 4.0)
- Computer based TOEFL – 193 (essay rating 4.0)
- GCE O-Level English – Grade C6
- HKDSE English – Level 2
- HKALE Use of English – Grade D7
- SPM Bahasa Inggris – Grade 4
- NZCEL 3 Academic endorsement
- PTE (Academic) score of 42 with no band score lower than 36
- PTE Academic Online\*
- English New Zealand Accredited Pathway Assessment Level 1
- LanguageCert – B2

#### COURSE CONTENT

- Academic vocabulary in general and specific subject areas
- Reading, critical understanding and assessment of academic texts
- Listening skills and strategies needed to understand academic texts and lectures
- Paraphrasing and summarising academic texts
- Critical assessment of academic reading and listening
- Delivery of presentations
- Participation in academic debates and discussions
- Research skills including electronic research, methodology and presentation of results
- Distinguishing between academic genres/ production of different academic writing
- Structuring an argument for academic texts and essays
- Group research skills

#### ASSESSMENT

##### English for Undergraduate Academic Purposes

Group research report	10%
Written summary	5%
Journal	5%
Seminar presentation	15%
Written research assignment	15%
<b>During course</b>	
Vocabulary	5%
End of course three-hour final exam	45%
<b>Total</b>	<b>100%</b>

\* Temporarily accepted for applications to intakes commencing in 2022 and 2023

English for Otago may suit:

- students who already have a conditional offer from the International Office and are required to improve their English
- students who have an unconditional offer from the International Office and who have not studied at a New Zealand tertiary institution.

## ENGLISH FOR OTAGO

### ENGLISH FOR POSTGRADUATE ACADEMIC PURPOSES (EPAP)



#### ADMISSION

This is an intensive course requiring a high entry standard. Students are required to pass the entrance test in order to enter English for Otago or have achieved the following results within two years of the start date of the course:

- IELTS – 6.0 (no band below 5.5)
- IELTS Online also accepted
- TOEFL iBT – 80 (writing 20)
- TOEFL iBT Home Edition\*
- Paper based TOEFL – 550 (TWE 4.5)
- Computer based TOEFL – 213 (essay rating 4.5)
- Cambridge Certificate in Advanced English (CAE) – Grade B
- Cambridge Certificate of Proficiency in English (CPE) – Grade C
- HKDSE – Level 4
- APIEL (Advanced Placement International English Language) – Grade 3
- International Baccalaureate
- NZCEL 4 Academic endorsement
- PTE (Academic) score of 50 with no band score lower than 42
- PTE Academic Online\*
- English New Zealand Accredited Pathway Assessment Level 2
- LanguageCert – C1

#### COURSE CONTENT

- Academic vocabulary in general and specific subject areas
- Reading, critical understanding and assessment of academic texts
- Listening skills and strategies needed to understand academic texts and lectures
- Paraphrasing and summarising academic texts
- Critical assessment of academic reading and listening
- Delivery of presentations
- Participation in academic debates and discussions
- Research skills including electronic research, methodology and presentation of results
- Distinguishing between academic genres/ production of different academic writing
- Structuring an argument for academic texts and essays
- Group research skills

#### ASSESSMENT

##### English for Postgraduate Academic Purposes

Group research report	10%
Written summary	5%
Journal	5%
Seminar presentation	15%
Written research assignment	25%
<b>During Course</b>	
• research proposal	
• literature review	
• paraphrasing and in-text citations	
• bibliography	
Vocabulary	5%
End of course three-hour final exam	35%
<b>Total</b>	<b>100%</b>

\* Temporarily accepted for applications to intakes commencing in 2022 and 2023