



ROYAL  
HOLLOWAY  
UNIVERSITY  
OF LONDON

# FOR WHAT MATTERS

POSTGRADUATE PROSPECTUS 2025/26

# WHY CHOOSE US?

## Top 25%

Learn from world-leading experts

We're in the UK top 25%  
for research

(THE, REF, Overall ranking of institutions, 2022)



Two inspiring locations

Central London's Bloomsbury  
district and scenic Surrey



University of London degree

A world-recognised  
qualification leading to  
exciting career options



Worldwide collaborations

Links with research,  
government and industry  
partners providing work  
experience and networking  
opportunities

# WELCOME

Are you ready to continue your studies? At Royal Holloway, you'll join a community of forward-thinkers in a culture of exploration, curiosity and purpose.

We're in the UK's top 25% of universities for research, and our close-knit, collaborative environment ensures education and research are fully integrated. You'll receive outstanding teaching, direct contact with world-leading experts and the chance to get involved in discoveries that create real-world change.

Brave from our beginnings, Royal Holloway has opened up university education to those who didn't think they belonged and asked the difficult questions for over 170 years. We're here for what matters – to society and the world, and most importantly, to you.

These pages will give you a taste of the amazing experience you'll get from being here. When you're ready, find out more on our website, visit one of our two campuses or chat to a current student online to find out more.

We can't wait to meet you!





# OUR TWO LOCATIONS

## Egham

**7** miles to  
London Heathrow

**40** minutes by train  
to central London

## Central London

**4** minute walk from  
Russell Square station

**19** minutes by  
public transport to  
Waterloo station





# POSTGRADUATE STUDY

Becoming a postgraduate student is an exciting leap into a new world of learning. The people you'll meet at Royal Holloway are here to support and encourage you every step of the way.

Whatever course you choose, from across business, science, arts or humanities, and whether you're based at our Egham or London campus, you'll join a diverse and unique community. Our world-leading academics and practitioners are passionate about making real change and developing the researchers of the future. Your Masters degree will give you the confidence and experience to make your mark too.

## Courses explained:

**Taught Masters** – perfect for specialising in your chosen subject, developing your skills or changing career direction. They include teaching modules and a dissertation or project.

**Masters by Research** – emphasis on independent research and ideal preparation for doctoral level study. You'll need to complete an extended dissertation of up to 40,000 words.

**Postgraduate diplomas** – shorter taught courses suitable for changing career direction or focusing on a specific subject.

If you already have a Masters degree and are interested in a doctoral degree, see page 104.

# 88%

**of research is rated world-leading or internationally excellent**

(Research Excellence Framework (REF), 2021)



“Community is so important here and I feel so loved and welcomed. There’s a unique character here which is open-minded and embracing of others, an eagerness to learn and make meaningful connections.”

**Winter**

MA Poetic Practice

# FUNDING AND INTERNATIONAL STUDENT SUPPORT

## International students

If you'd like extra support to prepare for postgraduate study, or don't meet the entry requirements, we provide a Pre-Masters programme at the Egham campus. It's run by our partners Study Group and will boost your English language and academic skills so you're fully confident for your Masters degree.

[rhulisc.com/programmes](https://rhulisc.com/programmes)

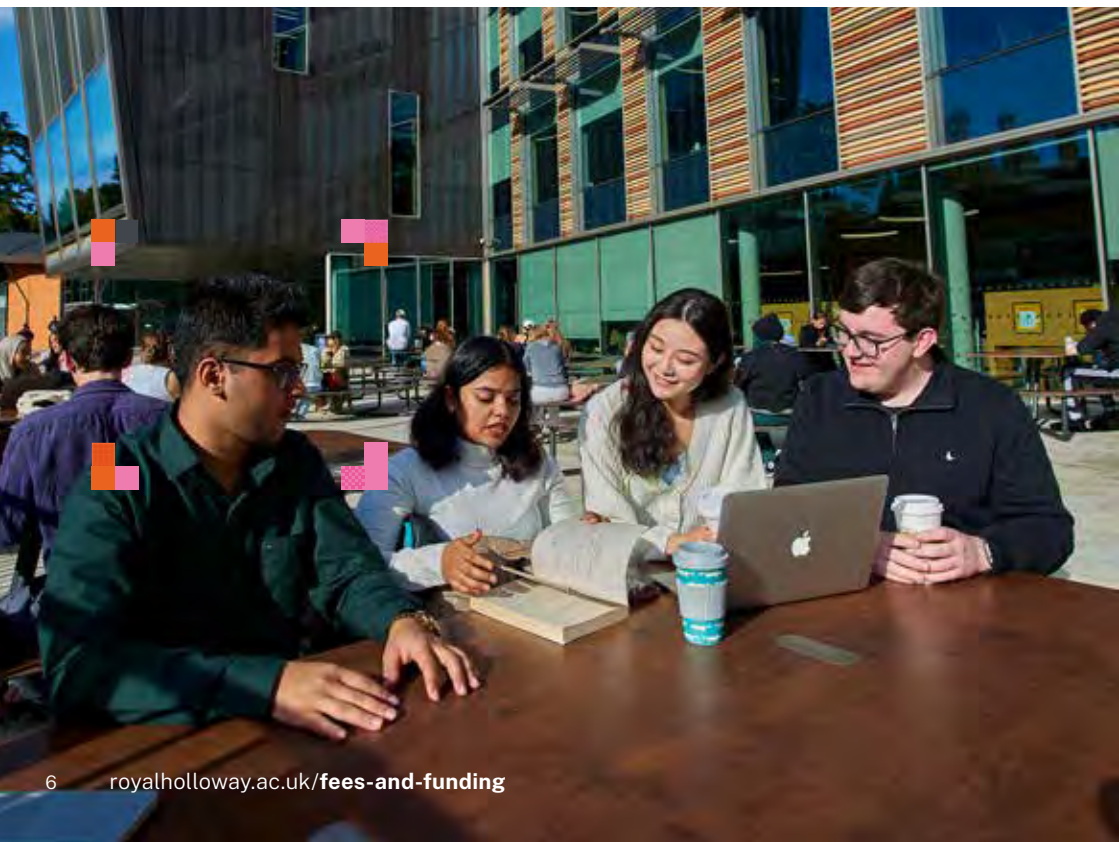
## Funding your studies

You'll need to pay a tuition fee for your course. The cost will depend on the course and whether you're a UK or international student. You'll also need to consider living expenses, like accommodation, food, travel and social life.

It's worth thinking about how you'll fund your studies.

You might consider:

- Royal Holloway scholarships – a range of automatic discounts for eligible students, as well as competitive awards.
- External scholarships – including Chevening, Fulbright and Marshall, competitive awards particularly for international students.
- Loans – including the Masters Loan, which provides up to £12,471 (2024 figures) for UK and Irish nationals.
- Alumni discount – 15% discount for Royal Holloway graduates and 10% for other University of London graduates.
- Part-time jobs – there are plenty available at our Egham campus, or in the local areas around both campuses.



# WHERE IT WILL TAKE YOU

“The entire system of Royal Holloway is structured to help you win! It paved the way for my current career path as an IT Product Manager, including leading the technology division at The Temple Company, one of the top entertainment agencies in Nigeria.”

**Ebun**

MSc Project Management

**85%** graduate success

(Postgraduate taught students in graduate level employment or further study 15 months after leaving Royal Holloway)\*



\* Graduate Outcomes Survey (students graduating in 2022) data from Heidi+, the Higher Education Statistics Authority (HESA) data analytics service



We'll make sure you leave university with more than just a postgraduate qualification. Careers support begins from day one and continues for up to two years after you graduate.

Everything you do here, from your academic work to being part of our award-winning Volunteering team, can be tailored to enhance your skillset. We'll help you identify and build the skills you need to stand out to employers and fulfil your career goals.

Guidance from your academic department is complemented by our expert Careers Service team. Together, they'll give you one-to-one careers coaching, practical support on writing CVs and job applications, preparing for interviews, finding placements, and much more.

We have strong links with lots of high-profile employers, including Gartner, McLaren Automotive, KPMG, Enterprise Mobility, Accenture and the NHS. You'll get invaluable opportunities to network with employers and former students at our careers fairs, employer drop-ins, skills sessions and alumni panels, so you can leave university ready for the workplace.



# STUDENT LIFE

We have around 1,200 postgraduate taught and 670 postgraduate research students and we're known for our close-knit and friendly community. Whether you're based in Egham or central London, you'll have loads of chances to build up your experience, make friends or just enjoy some well-earned downtime.

From musical theatre and debating to comics and cats, there's something for everyone with a great range of clubs and societies to join. There's also a sports centre on the Egham campus offering gym memberships, general fitness and exercise classes, along with recreational and competitive sports clubs.

"You'll get the experience of a lifetime with the best of both worlds. Egham offers tranquillity and peace but if you like partying you'll find that too, or you can immerse yourself in the vibrant city life of London."

**Alejandra**

MSc Digital Innovation and Analytics

Whether you want the vibrancy of pubs and clubs, or prefer a more laid-back atmosphere, there's a variety of on-site and local venues at both campuses, plus easy access to nightlife, galleries, museums and other popular venues.

Maybe you'll get involved with our thriving volunteering community, or take advantage of one of the many part-time jobs at the Egham campus or in the local areas.



# ACCOMMODATION

Staying in halls will keep you connected to wider university life, while helping you make friends with students at a similar stage of study.

Make sure you know which campus your course is taught at so you can make the best choice (the location is shown on our course pages here and online).

If you stay on our Egham campus, you'll live with fellow postgraduates in a shared flat or townhouse. If you have any access needs, we can help you find the right accommodation for your requirements.

There's also plenty of private sector accommodation in the nearby areas of Egham and Englefield Green.

If you're based in central London as a full-time postgraduate, we have some rooms available via the University of London's Intercollegiate halls of residence.



“I love living in George Eliot Hall. We share a big communal room and often socialise and cook together. The time I’ve spent with my flatmates and friends is unforgettable.”

**Ting**  
MA International Media Management

Egham campus halls	Room type	Total price 2024/25	Weekly price (approx.)
George Eliot	Single room in a shared townhouse (sharing bathroom with one other student)	£10,288.52	£206
Highfield Close Houses	Large or standard-sized single bedrooms in a shared house	£6,627.51-£9,562.60	£133-191
Highfield Court	Single en-suite room with shared kitchen	£9,335.75	£187
Penrose Court	Single room with washbasin with shared kitchen	£6,627.51	£133

Postgraduate halls are self-catered and are offered on a 50-week let. Prices above are for 2024/25 academic year and will change for 2025/26. Please see our website for the latest information as availability, let lengths and terms and conditions can change.

# FIND OUT MORE

Once you've had a look through these pages, keep an eye on our website, where you can find out even more about being a postgraduate student.

Our online prospectus is packed with information and videos about our facilities, support services and more. You'll also find an up-to-date list of all our upcoming events, both online and in person, where you can chat to academics and current students and learn more about your chosen course.

Don't forget to sign up to our mailing list and we'll be in touch with lots more information about studying at Royal Holloway.



[royalholloway.ac.uk/pgstudy](https://royalholloway.ac.uk/pgstudy)

## CHAT TO A CURRENT STUDENT

Get chatting to someone who's been there and done it. Our students can tell you everything from their favourite modules to the best spots to grab a coffee.

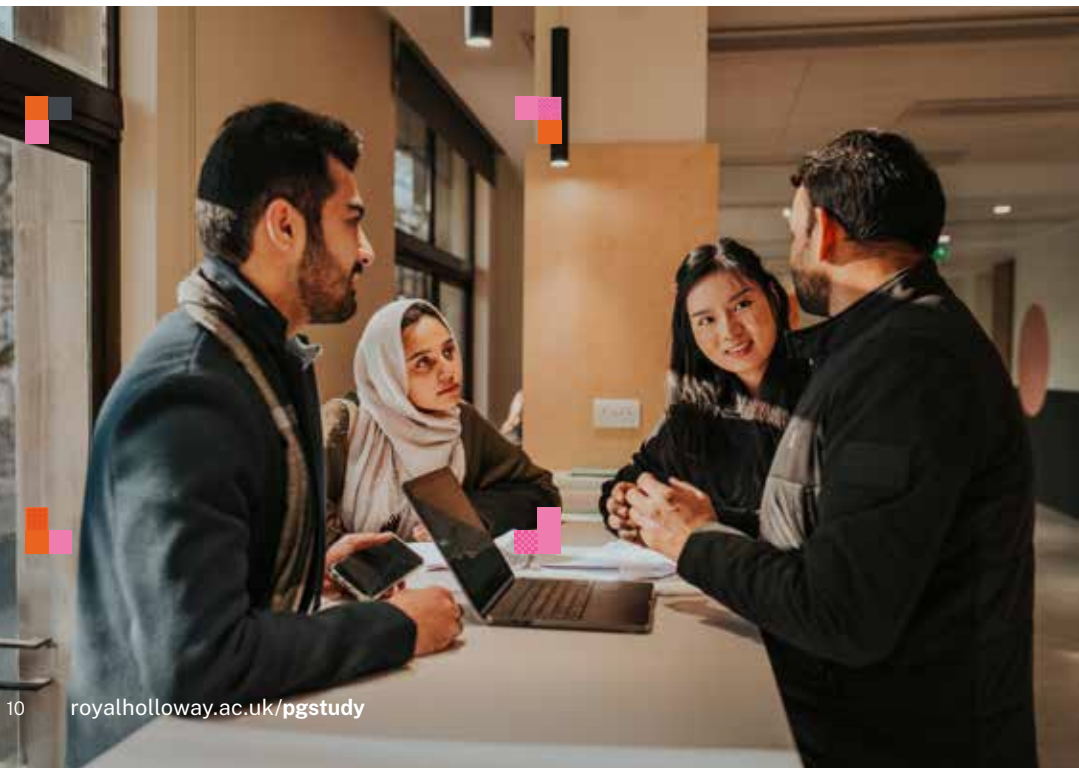


[royalholloway.ac.uk/chat](https://royalholloway.ac.uk/chat)

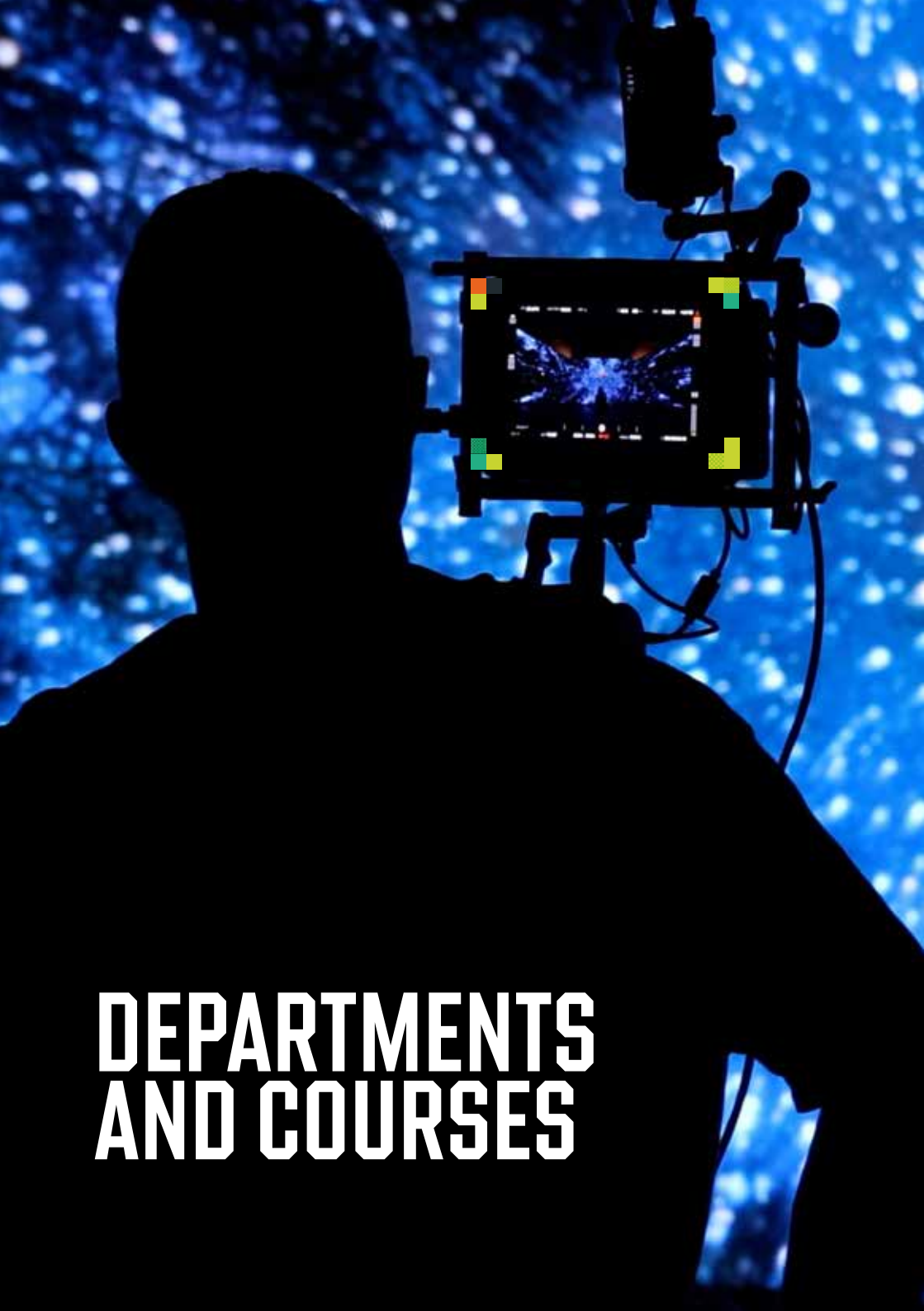
Chat with me



Postgraduate student Liam







# DEPARTMENTS AND COURSES

# Biological Sciences

Internationally recognised for world-leading research impact, our department has an active research programme based on four overlapping research themes: Healthy Ageing and Molecular Medicine; Biodiversity and Ecosystem Services; Sustainable Engineering and Food Security; and Data and Technology Resources.

## Profile

- We're a vibrant scientific community and a major centre for research in the University of London.
- Our academic staff are working at the forefront of knowledge in their subjects. They frequently appear in the media talking about the latest ideas and action to address global challenges.
- We exchange research knowledge and expertise across the whole department, and through research collaborations with other leading universities and organisations in the UK and internationally.
- You'll join a close-knit and supportive community with continuous investment in new equipment.
- Our research funding comes from the European Commission, major UK Research Councils, medical research charities, wildlife and environmental organisations, commercial sector and government agencies.
- We're part of the School of Life Sciences and the Environment, advancing knowledge and changing lives.



"I've had opportunities to suggest ideas to expand the research and techniques used in my lab, and collaborate with a research group at Stanford University. The training, support, and possibilities offered at Royal Holloway are endless."

**Cordelia**

Former MSc and current PhD student

**MSc Biological Sciences Research****E** Egham campus, FT/PT, 12/24 months

This degree suits graduates who want to undertake original research and those who are looking to gain a research-based Masters before embarking on a PhD. For students with a good first degree in Biochemistry, Biology or related disciplines, it offers the opportunity to develop research skills and acquire advanced research techniques through a one-year supervised research project. The minor taught element covers a wide range of generic research-related topics. Projects are available within any of our research centres; please see our website for details.

**Research opportunities**

We welcome applications for postgraduate research places leading to a PhD. Please email the academic staff you are interested in working with to discuss potential projects. We have a number of PhD studentships available each year, with funding from UK Research Councils, institutional sources, companies and charities.

**Research facilities**

Our department has a wide range of research facilities including cutting-edge molecular and biochemical tools, and we are located on a beautiful campus with extensive areas of natural habitat for fieldwork. We're also a short distance from Sites of Special Scientific Interest, with sites of national scientific importance right on our doorstep such as Windsor Great Park and Chobham Common, and Box Hill nearby.

**Your future career**

Many of our graduates progress towards a research career in a variety of sectors. A close-knit graduate network means you'll benefit from the knowledge and connections of our alumni.

Recent employers include Natural England, Royal Free Hospital, Natural History Museum, London Zoo, Syngenta, Defra and Plantlife International.

**100%**

research impact is rated world-leading or internationally excellent

(Research Excellence Framework, 2021)

**26th**

in the UK for world-leading and internationally excellent research

(THE, REF Institutions ranked by subject, 2022)

**Courses**

MSc Biological Sciences Research  
MPhil/PhD

**Follow us**

@RHULBioSci



Biological-Sciences-Royal-Holloway-  
University-of-London

**Tuition fees 2025/26**

UK students\*: £7,786 per year

International students\*: £31,700 per year

\* Fee includes a £3,000 bench fee.

UK tuition fees for research courses are set annually in spring by UKRI and may increase. Please check website for updates.

**More course information and contacts**

[royalholloway.ac.uk/courses](http://royalholloway.ac.uk/courses)

**More department information**

[royalholloway.ac.uk/biologicalsciences](http://royalholloway.ac.uk/biologicalsciences)

**Entry requirements and how to apply**

See page 106.



# Business and Management

Join an intellectually rigorous, research-led and AACSB-accredited School of Business and Management, which is highly ambitious for the success of our students and staff. We support today's graduates to become tomorrow's business leaders, by offering a truly international learning experience to reflect the global nature of modern business.



“My cohort was so diverse! I really enjoyed meeting people from all over the world. The fundamental skills I’ve learned are invaluable, I use them daily and they have helped me to succeed.”

**Nishka**

MSc Human Resource Management

## Profile

- Our first-class reputation for internationally excellent and cutting-edge research, coupled with the extensive industry experience of our academics from around the world, feeds directly into our postgraduate degrees.
- Our degrees combine academic knowledge with practical insights into international business, providing you with knowledge, skills and expertise to progress your career.



The Moore Building, home of the School of Business and Management

\* Degree under development

# 82%

research rated world-leading or internationally excellent

(Research Excellence Framework 2021)



INTERNATIONAL  
COHORT

## CIM

Accredited Degree

Marketing degrees

## Courses

MSc Accounting and Financial Management  
 MSc AI for Business\*  
 MSc Business Analytics  
 MSc Digital Marketing  
 MSc Entrepreneurship and Innovation  
 MSc Entrepreneurship and Innovation with a Year in Business  
 MSc Human Resource Management  
 MSc International Business Management  
 MSc International Business Management (Marketing)  
 MSc International Business Management (Strategy and Leadership)  
 MSc Logistics and Supply Chain Management  
 MSc Marketing  
 MSc Project Management\*  
 MSc Sustainability and Management  
 MPhil/PhD

## Follow us



@RHULManagement



RHULManagement



@rhulbusinessandmanagement



school-of-business-and-management-royal-holloway

## Tuition fees 2025/26

See website for more details

## More course information and contacts

[royalholloway.ac.uk/courses](http://royalholloway.ac.uk/courses)

## More department information

[royalholloway.ac.uk/business](http://royalholloway.ac.uk/business)

## Entry requirements and how to apply

See page 106.



Business and Management students on their presentation day

### **MSc Accounting and Financial Management**

**E** Egham campus, FT, 12 months

Open to all undergraduate backgrounds, this course will develop your understanding of the theory and practice of accounting and financial management, by examining topics from financial accounting and reporting to the concepts of financial management and business economics.

#### **Example modules**

- Financial accounting and reporting
- Foundations of financial management
- Management accounting for decision-making
- Topics in finance and investment management
- Sustainability and accounting

### **MSc AI for Business\***

**E** Egham campus, FT, 12 months

Our Masters will equip you with cutting-edge knowledge and practical AI skills that are increasingly in demand in business. You'll develop an understanding of AI's transformative potential in digital business and will analyse the capabilities and limitations of AI technologies, design AI-driven solutions for complex challenges, and assess the social and ethical implications of AI.

#### **Example modules**

- AI in practice
- AI and future of work
- Business Intelligence
- Digital strategy and business models
- Responsible AI and digital innovation

### **MSc Business Analytics**

**E** Egham campus, FT, 12 months

This Masters will equip you with strong business analytic skills and the capability to make informed decisions based on the data available. You will develop highly sought-after digital skills designed to enhance your employability and learn how to put into practice cutting edge knowledge to make qualified, real-world business decisions.

#### **Example modules**

- Business intelligence
- Machine learning & predictive analysis
- Business analytics in practice
- Cloud computing
- Digital strategy and business models

### **MSc Digital Marketing**

**L** Central London, FT, 12 months

Based at our central London campus, you'll gain a broad perspective of digital marketing, from digital branding and advertising to the consumer journey and metrics. The course teaches you how to create and analyse digital strategies, to make informed tactical and strategic decisions. Certified by the Chartered Institute of Marketing (CIM).

#### **Example modules**

- Digital brand storytelling
- Digital consumer in online culture
- Advertising in a digital era
- Search and metrics



**MSc Entrepreneurship and Innovation**

**E** Egham campus, FT, 12 months  
(with additional 12 months for Year in Business option)

This Masters provides you with an in-depth understanding of entrepreneurship and innovation research, an appreciation of the impact of entrepreneurship and innovation and the processes and practices at every level.

You will look at contemporary issues such as family business management, entrepreneurship and consultancy, and social entrepreneurship.

**Example modules**

- Venture creation and financial planning
- Entrepreneurial marketing
- Family and small business management
- Business ethics and social entrepreneurship

**MSc Human Resource Management**

**E** Egham campus, FT, 12 months

Examining the major areas of human resources and employment relations policy, this degree provides you with a rigorous analytical approach and overview of Human Resources Management. You will examine how organisations learn, exchange knowledge and compete in a globalising knowledge-based economy. The course will also enable you to improve your social, communication and presentation skills.

**Example modules**

- Principles of human resource management
- Organisational learning, knowledge and work
- Human resource management in global contexts
- Strategic human resource management
- Comparative human resource management

**MSc International Business Management**

**E** Egham campus, FT, 12 months

Studying International Business Management will provide you with a comprehensive understanding of organisations, their management, and the environment in which they operate. You will examine accounting and finance as well as human resource strategies from a manager's point of view and will develop knowledge of how international management fits into the organisation and running of a company or multi-company corporation.

**Example modules**

- Operation management
- Economics, finance and accounting
- Strategy and ethics in international business management
- Digital business and marketing

**MSc International Business Management (Marketing)**

**E** Egham campus, FT, 12 months

The Marketing specialism for the International Business Management degree is an intensive and rewarding programme, which will prepare you for the competitive world of work. You'll gain a comprehensive knowledge of general management concepts with a focus on how international marketing fits into the organisation and running of a company or multi-company corporation. Certified by the Chartered Institute of Marketing (CIM).

**Example modules**

- Marketing communications
- Economics, finance and accounting
- Strategy and ethics in international business management
- Digital business and marketing

**MSc International Management (Strategy and Leadership)**

**E** Egham campus, FT, 12 months

This International Business Management pathway will allow you to gain a comprehensive and integrated knowledge and understanding of organisations, their management, approach to strategy and leadership, and the environment in which they operate. It will prepare you to be a contemporary leader and strategist, able to enter the globalised workplace on a competitive footing.

**Example modules**

- Professional business and applied research skills
- Economics, finance and accounting
- Strategy and ethics in international business management
- Digital business and marketing

## MSc Logistics and Supply Chain Management

**L** Central London, FT, 12 months

Accredited by The Chartered Institute of Logistics and Transport and taught in central London, this degree will provide you with the knowledge of logistics and supply chain management needed to make a significant contribution in an international marketplace. Advised by leaders from industry, this course equips you with the tools necessary to make future supply chains more sustainable, resilient and responsive in an increasingly digital and unpredictable world.

### Example modules

- International logistics and supply chain strategy
- Digital supply chains
- Transport and network design
- Customer service and omni channel retailing
- Circular economy and sustainable supply chains

## MSc Marketing

**E** Egham campus, FT, 12 months

This is a unique interdisciplinary course aimed at developing your professional and practical skills as a marketing manager. You will build a sound knowledge and understanding of marketing's contemporary challenges and be provided with cutting-edge insights into consumer markets.

Certified by the Chartered Institute of Marketing (CIM).

### Example modules

- Contemporary issues in marketing
- Strategic brand management
- Digital marketing
- Managing consumer experiences
- Marketing data analytics



“Royal Holloway has become a second home, full of people I gel with and trust. It has fulfilled the promise of giving me a bright future. I would strongly recommend my course.”

**Dev**

MSc International Business Management



MSc Accounting and Financial Management students visiting the European Headquarters of Bloomberg in London

### MSc Project Management\*

#### **L** Central London, FT, 12months

Informed by industry connections, this course has been designed to meet the demands of employers across competitive global markets. It suits graduates from a range of backgrounds interested in a career which involves managing projects, from fashion and film to the charity sector, and from scientists to government employees. You'll be equipped with practical tools and skills, together with an understanding of the academic theories underpinning them. You'll learn about basic and advanced project management concepts, strategy and ethics, the funding of projects and risk management, finance and accounting and gain an understanding of the challenges of managing projects in different industries.

### MSc Sustainability and Management

Taught in partnership with the Department of Geography. See page 48.

### Research opportunities

We undertake agenda-setting research on management and organisation theory, policy and practice, addressing pressing cultural, social, economic and business challenges.

**E** Egham campus    **L** Central London

\* Degree under development

FT (Full-time) PT (Part-time) 12/24 (Months duration)

We frequently collaborate with industrial and commercial research partners, as well as academic colleagues at other institutions (both in the UK and internationally) and in other departments at Royal Holloway.

Our research centres:

- Centre for Critical and Historical Research on Organisation and Society (CHRONOS)
- Digital Organisation and Society Research Centre (DOS)
- Centre for Research Into Sustainability (CRIS)

### Your future career

Our postgraduate business and management degrees can help grow your employability for success throughout your chosen career. Accredited by the Association to Advance Collegiate Schools of Business (AACSB), this means your qualification is recognised in industry, giving you a competitive edge when applying for jobs.

As well as employability-focused teaching, we also have dedicated support through our Careers Services including CV support, interview training and one-to-one consultations.

# Classics

Our internationally recognised Classics department has a vibrant research culture and a thriving and diverse graduate community. Enjoy a distinctive and rewarding postgraduate experience with our innovative Classicists.



“The campus setting, close-knit community of the Classics department and small class size meant I got a more personalised experience, whilst also having access to resources from other University of London colleges.”

**Maddie**  
MA Classics



## Profile

- We cover a full range of Classics subjects, with core strengths in oratory, theoretically-driven approaches to Classical literature, digital archaeology, and Classical reception. Our research and teaching is embedded in the contemporary world, seeing Classics as both part of modern culture and offering a critical distance from which you can engage with global challenges.
- We run three MA courses taught in partnership with King's College London and University College London, with a wide choice of modules. There are also MRes programmes that draw on the expertise of our research centres in the Reception of Greece and Rome and for Oratory and Rhetoric.
- Our courses provide ideal preparation for PhD work or an additional year of advanced study to enhance your undergraduate qualification.
- We're part of the interdisciplinary School of Humanities, championing active engagement in a diverse world.



The colonnaded street in Apamea, Syria



Take MA courses at  
Royal Holloway, UCL or King's

## Top 10

in the UK for Classics  
and Ancient History

(Guardian University Guide, 2025)

### Courses

MA Ancient History  
MA Classical Art and Archaeology  
MA Classics  
MRes Classical Reception  
MRes Rhetoric  
MPhil/PhD

### Follow us



@ClassicsRHUL



ClassicsAtRoyalHolloway

### Tuition fees 2025/26

UK students: £11,600 per year  
International students\*: £23,700-£26,100  
per year

\* Fees may vary per course, please check  
website for full details.

For research degree tuition fees please  
see website.

### More course information and contacts

[royalholloway.ac.uk/courses](http://royalholloway.ac.uk/courses)

### More department information

[royalholloway.ac.uk/classics](http://royalholloway.ac.uk/classics)

### Entry requirements and how to apply

See page 106.

## MA Ancient History

**E** Egham campus/central London, FT/PT, 12/24 months

You'll be able to specialise in the history of the ancient Greek, Roman and Middle Eastern worlds. Covering the historical period from Classical Athens to Christian Byzantium, we offer modules which allow you to examine many aspects of the ancient history of Greece, Rome and the Middle East. The core 'Sources and methods in ancient history' module will introduce you to the disciplines, methodologies, and problems encountered when doing research in the field of ancient history.

### Example modules

- Social and Economic History of the Roman Empire
- Alexander the Great: texts, contexts and criticisms
- Household and empire: the Roman family from Augustus to Justinian

## MA Classical Art and Archaeology

**E** Egham campus/central London, FT/PT, 12/24 months

This Masters is designed for those who want to deepen their understanding of the ancient world through advanced study of the art and archaeology of the Greeks and Romans. You will be able to choose modules exploring a wide range of Greek and Roman art and archaeology from all parts of the Mediterranean world, and develop your skills in the techniques of art history and archaeology.

### Example modules

- City of Athens
- Understanding Pompeii and Herculaneum
- Art, Architecture and Identity in the Hellenistic World

## MA Classics

**E** Egham campus/central London, FT/PT, 12/24 months

Study a full range of Classical literature and language, and strengthen your understanding of ancient literary culture. You will be able to improve your ancient languages or learn new technical skills such as papyrology, epigraphy or palaeography. You can choose from a range of modules covering Greek and Latin literature from Homer to late antiquity, ancient philosophy and Classical reception.

### Example modules

- Athenian Law and Social History
- The ancient novel
- Latin for Research (Beginners)

## MRes Classical Reception

**E** Egham campus, FT/PT, 12/24 months

Are you fascinated by the continuing use and influence of the ancient world in modernity? This research-focused course allows you to explore an aspect of the Classical legacy in depth through a 30-35,000 word dissertation on a subject of your choice. A core course in the autumn, 'Making the Classical past', introduces you to the broad range of approaches to Classical reception, and prepares you for the challenges of defining and completing a major piece of independent research work under the close supervision of staff who are experts in this area.

## MRes Rhetoric

**E** Egham campus (with optional modules in central London), FT/PT, 12/24 months

This research-focused course provides an overview of oratory and rhetoric in both the ancient and modern periods. You will receive a grounding in the principles of rhetorical theory and practice based on Classical principles, and develop your skills in articulating and presenting your own arguments at the same time as analysing how others have used rhetoric to their advantage. Through two substantial independent projects and a dissertation, along with a year-long core module, 'Problems and methods in oratory and rhetoric', and a further course chosen from the department's MA menu, students receive a thorough grounding in how to strengthen oral and written communication.



Study the frescoes of Pompeii on MA Classical Art and Archaeology



Participating in a drawing workshop at the Great North Museum, Newcastle, looking at alternative ways to respond to museum objects

### Research interests and opportunities

We welcome applications for our MPhil and PhD research programmes. Academic staff are happy to discuss research projects in advance of a formal application. Please contact our Director of Postgraduate Research Education or write directly to your proposed supervisor.

The department has a wide-ranging research profile. Our literary interests cover Homer, the epic tradition, Greek drama, the ancient novel, Greek literature under the Roman Empire, ancient rhetoric and oratory, Latin epic and elegy, and Roman Stoicism. In ancient history, we specialise in the history of Greek law, Athenian political and social history, power, hegemony and Gramsci, gender studies, and the economic, political and social history of Rome. In Classical art and archaeology, we have strengths in Greek architecture, quantitative methods in archaeology, ancient water systems and management, the Roman Middle East, contemporary approaches to Roman archaeology, and environmental archaeology. In Classical reception, we have expertise in political and literary philosophy, urbanism, literary receptions, science fiction, and popular culture.

### Research facilities

Alongside the Royal Holloway library, our postgraduate students have access to the world class library resources of the Institute of

Classical Studies, the Warburg Institute, the British Library, Senate House Library, and other specialised libraries in the School of Advanced Study. The Centre for the Reception of Greece and Rome, the Centre for Oratory and Rhetoric, and the Humanities and Arts Research Institute have their own programmes of events. The department runs research seminars and colloquia days, offers students dedicated training events, and, as part of the University of London, participates in one of the most extensive programmes of research seminars and events offered by any institution.

### Your future career

Our MA students emerge with high-level research, analytic, and writing skills which equip them for a wide range of careers in, related to, and beyond academia. Recent graduates have gone on to careers in teaching in the UK and internationally, in museum and heritage sector work, and in social and governmental research, as well as in the cultural, media, and creative sectors, legal and financial professions, and tech and information industries.

Career-focused events and training include skills sessions, alumni showcases and Q&As, as well activities run by the School of Humanities and the wider University.

# Computer Science

As an elite department with world-leading researchers, the theories we develop lead to the design and building of novel practical computing systems, and their application in the real world.

“Studying here has been a brilliant turning point in my life. As a mature student I felt warmly welcomed by the University and have really appreciated all the support and encouragement from professors and students.”

Hyosun

MSc Machine Learning





## Profile

- Our research is particularly strong in Artificial Intelligence and Machine Learning closely informing the teaching on our Masters courses, as well as Algorithms and Complexity, Bioinformatics, Programming Languages & Systems, and Type Theory.
- We collaborate with many research groups as well as with companies and organisations worldwide including AstraZeneca, Centrica, Facebook, Google and IBM.
- Our taught Masters are offered with an optional paid industrial internship that can take up to one year (excludes MSc Applied Data Science).
- We host talks by visiting academics and industrial partners, which address research topics in emerging areas and the way companies and businesses exploit cutting-edge technologies.
- We're part of the School of Engineering, Physical and Mathematical Sciences, delivering world class fundamental research and impact.



Computer Science staff have designed and delivered AI training to help the UK government upskill its workforce and create an AI-capable civil service.

# 17th

in the UK for world-leading research

(THE, REF Institutions ranked by subject, 2022)

## Courses

MSc Applied Data Science

MSc Artificial Intelligence\*

MSc Computational Finance\*

MSc Data Science and Analytics\*

MSc Machine Learning\*

MSc Computer Science by Research

PhD Computer Science

\* A Year in Industry variant also available.

## Follow us



RHULComputerScience

## Tuition fees 2025/26

UK students: £14,400 per year

International students\*\*: £26,100-£31,100 per year

\*\* Fees may vary per course, please check website for full details.

For research degree tuition fees please see website.

## More course information and contacts

[royalholloway.ac.uk/courses](https://royalholloway.ac.uk/courses)

## More department information

[royalholloway.ac.uk/computerscience](https://royalholloway.ac.uk/computerscience)

## Entry requirements and how to apply

See page 106.

## MSc Artificial Intelligence

**E** Egham campus, FT/PT, 12/60 months

Equipped with Artificial Intelligence techniques, today's systems can teach themselves to perform tasks almost as well as humans can. This degree provides you with the foundational knowledge and the practical skills required to operate with these disruptive technologies. A Year in Industry variant is also available, studied over two years full time.

### Example modules

- Autonomous intelligent systems
- Deep learning
- Natural language processing
- Reinforcement learning

## MSc Computational Finance

**E** Egham campus, FT/PT, 12/60 months

Jointly delivered with the Department of Economics (page 36), this degree allows you to specialise in modern quantitative finance and computational methods for financial modelling. A Year in Industry variant is also available, studied over two years full time.

### Example modules

- Data analysis
- Principles of computation and programming
- Investment and portfolio management
- Fixed income securities and derivatives

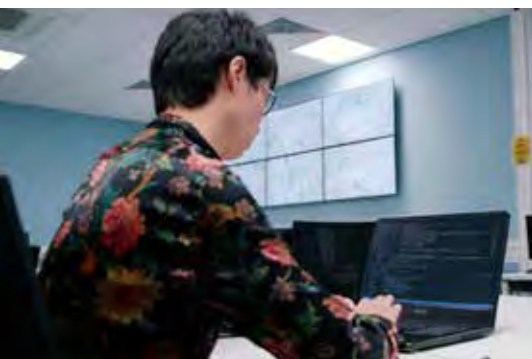
## MSc Data Science and Analytics

**E** Egham campus, FT/PT, 12/60 months

This will prepare you for a career in Big Data. You will be taught both the foundational aspects and the practical skills that prepare you for handling and analysing different types of data in different fields. A Year in Industry variant is also available, studied over two years full time.

### Example modules

- Data analysis
- Large-scale data storage and processing
- Business intelligence systems, infrastructures and technologies
- Visualisation and exploratory analysis



## MSc Machine Learning

**E** Egham campus, FT/PT, 12/60 months

Gain a deeper understanding of the science of systems that can learn from data, including Deep Learning, which is at the heart of the revolution that Artificial Intelligence is bringing to all sectors of the economy and society. A Year in Industry variant is also available, studied over two years full time.

### Example modules

- Machine learning
- Online machine learning
- Deep learning
- Natural language processing

## Year in Industry

All taught Masters degrees (except MSc Applied Data Science) are offered with an optional paid industrial internship that can take up to one year. Examples of companies where our students have been placed include Autilla, Axonix, BGL Group, BMW Group, Cartesian, Centrica, Choosic, Civil Service GOV.UK, Data Reply, D4t4 Solutions, Disney, EDF Energy, Foward3D, Gamesys, HACT, IBM, Infinity Energy Organisation Ltd, Jacobs, Jaguar Land Rover, Knorr-Bremse Rail Systems UK Ltd, Lindgreen Labs, Neural Technologies, ONS, Procter & Gamble, QuintilesIMS, Siemens Healthcare Limited, Société Générale, Standard Chartered, Statiq, UBS, VMware, World Remit, and the Z/Yen Group. A large majority of students were offered jobs at the end of their placement.

## MSc Applied Data Science

**E** Egham campus, FT, 12 months,

This conversion course enables students with little prior exposure to computing to develop expertise and valuable skills that will prepare you for a career in the growing data science industry where there is significant demand for skilled personnel, both in the UK and internationally. A closely related MSc in Applied Data Science and Cyber Security is jointly delivered with the Information Security Group (page 60).

### Example modules

- Computing for data analysis
- Multi-dimensional data processing
- Methods of visualisation and exploratory analysis
- Applications of data science

## Research opportunities

### MSc Computer Science by Research

**E** Egham campus, FT/PT, 12/24 months

The Masters by Research provides substantial, supervised research experience and intensive teaching of research skills and techniques. It offers a unique chance to take steps into scientific research, and to progress to more advanced studies or into employment in research intensive companies or organisations.

### PhD/MPhil Computer Science

To discuss PhD and MPhil opportunities, please email the academic staff member you are interested in working with. A full list of staff and their research interests is on our website. Each year the department has a number of scholarships that are awarded on merit. Teaching assistantships are also available. We provide regular training sessions on research skills and postgraduates enjoy a lively intellectual environment with regular contact with their supervisors, research seminars, and social events.

### Code Groovers

Code Groovers is the commercial software development arm of the Department of Computer Science at Royal Holloway. Staff and students work together to conceive and develop proven software solutions for our clients using state-of-the-art technologies and methods.

### Research interests

Our research is structured into five centres, some of which are interdisciplinary.

**Algorithms and Complexity:** studying various kinds of algorithms – parameterised, exact, randomised, heuristic and approximate – for problems arising in areas such as graph theory, constraint satisfaction, combinatorial optimisation, and artificial intelligence.

**Intelligent Systems:** spanning theory and practice, from resilience and security of IoT systems, formal modelling and analysis of cyber-physical systems with applications in security and medicine, to cognitive and autonomous agent systems; and automated planning, scheduling and search control with applications in surveillance, disaster response missions, and space operations.

**Reliable Machine Learning:** focusing on fundamental research in machine learning and commercial industrial applications, with strengths in methods and performance guarantees that require minimal assumptions about the data; research is conducted in statistical learning

theory, conformal prediction, prediction with expert advice, and game-theoretic foundations of statistics, probability, and finance.

**Robust Inference in a Digital Economy:** addressing the opportunities and challenges resulting from the digitalisation of society, from robust inference as the basis for decision-making in finance, economics, and other social sciences, to data collection, processing and analysis and big-data technologies.

**Programming Languages and Systems:** focusing on the expression, meaning, and formal analysis of computational systems for developing robust, secure, and reliable computing systems; the work centres on the formal properties and utility of generalised parsing techniques coupled with formal semantic specification and interpretation.

### Research facilities

We have state-of-the-art networked computer facilities that can be accessed from off campus using VPN. Students have access to a dedicated computing cluster HP DL380 comprising 32 processors, 32 Terabytes of disk storage, and GPU. The cluster is currently running the full-fledged Hortonworks Hadoop distribution (HDP) as well as the PostgreSQL and MongoDB servers. It also serves as a repository for massive data sets provided by our industrial and academic partners. We have a dedicated GPU cluster supporting artificial intelligence and machine learning modules. It is based on Kubernetes Cluster with RUNA:ai software controlling the GPU workloads. The CPU node has two AMD EPYC 7713 64-Core 2000MHz processors and the GPU node has four NVIDIA A100-SXM4-80GB units with GPU memory totaling 320 Gigabytes.

### Your future career

Our graduates have entered into successful careers in academia or in companies or organisations operating in highly competitive areas, such as Amazon, American Express, BGL Group, Bupa, Capita, Centrica, EY, Facebook, Google, Hortonworks, JP Morgan, Microsoft, ONS, PWC, QuintilesIMS, Rolls Royce, Shell, UBS, VMware, Xerox and the Z/Yen Group.

In addition to the support provided by The Careers Services, the department has dedicated staff who coordinate and oversee placements and job opportunities.

# Drama, Theatre and Dance

We're a lively and diverse community of researchers highly recognised for our international focus, working at the cutting edge in many different aspects of drama, theatre and performance.



“Working with Katie Mitchell provided a strong foundation for directing, and understanding of the theatre industry and community. There were so many opportunities to explore our personal interests and set up professional contacts.”

**Chessie**

MA Theatre Directing



## Profile

- Our research explores the way theatre and performance asks questions on social justice, on engagement with the public sphere, on understanding the present through critical engagement with the past, on international perspectives and on developing new forms of creative practice.
- This informs our teaching and learning at all levels, and aims to connect you to people across diverse disciplines, publics, cultures and communities.
- We're committed to theoretically informed research throughout our research strands: applied and participatory theatre, contemporary theatre, dance, performance practices, theatre history and transnational performance.
- Many of our academics have professional experience as theatre makers, and their research is influenced by their practice as directors, writers, performers, dramaturgs and choreographers.
- We're part of the interdisciplinary School of Performing and Digital Arts, which encourages diverse and collaborative creativity.



Multimedia performance in the Caryl Churchill Theatre

# 95%

research impact is rated world-leading or internationally excellent

(THE, REF rankings by subject, 2022)

# 14th

in the world for performing arts

(QS World University Rankings by Subject, 2024)

# 2nd

in the UK for research quality

(Complete University Guide, 2025)

## Courses

MA British Literature, Theatre, Cultures\*  
MA Theatre Directing  
MA by Research  
MA Writing for Screen, Stage and Radio\*  
MPhil/PhD

\* New degree under development.

## Follow us



@RHULDrama



rhuldrama

## Tuition fees 2025/26

UK students: £11,600 per year

International students: £26,100 per year

For research degree tuition fees please see website.

## More course information and contacts

[royalholloway.ac.uk/courses](http://royalholloway.ac.uk/courses)

## More department information

[royalholloway.ac.uk/drama](http://royalholloway.ac.uk/drama)

## Entry requirements and how to apply

See page 106.

## MA British Literature, Theatre, Cultures

**E** Egham & London campus, FT/PT, 12/24 months

Explore your passion for contemporary British culture with a focus on literature in this interdisciplinary course. You'll learn about the connections between historical and contemporary British culture, and have access to writers, practitioners, and representatives of cultural institutions, as well as analysing performances staged in London - one of the theatre capitals of the world.

### Example modules

- British Literature, Theatre and Cultures
- Contemporary British Theatre
- Concept and Dramaturgy
- Creative Dissertation

## MA Theatre Directing

**E** Egham campus, FT, 12 months

This is a leading specialist intensive course led by world-renowned director Katie Mitchell, introducing you to the practical and intellectual challenges of preparing a script and actors for performance. You will be encouraged to approach the rehearsal room in a new light, with multiple opportunities to direct, including directing in our Caryl Churchill Theatre. In the module 'Theatre Directing' you will develop an understanding of how to take a prepared text into the rehearsal room before translating it into legible performance. In 'Making Performance' you will take directing skills into contemporary theatre-making processes including immersive

practices, site-based approaches, new writing, and collaborative work. 'Contemporary British Theatre' explores major themes in current British playwrighting through key texts and writers, whilst 'Concept and Dramaturgy' examines the role of these two elements in theatre directing through encountering the work of major international directors. The MA Dissertation or Director's log introduces you to research processes and practice as research (PAR) in preparation for your own final directing project.

### Example modules

- Theatre Directing
- Making Performance
- Contemporary British Theatre
- Concept & Dramaturgy
- MA Dissertation or Director's log: production and process

## MA Writing for Screen, Stage and Radio

**E** Egham campus, FT/PT, 12/24 months

This course offers a broad training in dramatic writing across stage, screen and radio for aspiring industry creatives across the world who are looking to build a portfolio creative writing career, ready for creative industries across the world that are crying out for new stories, experiences and voices.

### Example modules

- Principles of Story
- Playwriting
- Screenwriting
- Writing for Radio



Student performance



Caryl Churchill Theatre

### MA by Research

#### Egham campus, FT/PT, 12/24 months

The MA by Research (Drama and Theatre Studies) is a flexible course that allows you to undertake in-depth study (both full and part-time), under the supervision of international experts, on a broad range of subjects, including cultural studies, drama, theatre studies, dance studies, performance studies or comparative topics. The core of the MA by Research is a 30,000 word dissertation on a subject of your choice, so you can explore your area of interest in real depth and to develop sophisticated critical and analytical research and writing skills.

### Research opportunities/ departmental research interests

We welcome applications for places on our MPhil and PhD research programmes. Academic staff are happy to discuss research projects in advance of a formal application. Please contact our Director of Postgraduate Research Education or write directly to your proposed supervisor. The department has research specialisms in a broad range of international performance contexts including contemporary British theatre, Asian theatre and performance, applied theatre and social engagement, museum and gallery contexts, as well as dance and new technologies. We also support practice-based research and offer workshops across disciplines in the creative arts and humanities. We have a large and dynamic group of doctoral researchers in the School of Performing and Digital Arts, so you'll always feel supported as part of our future-facing research community.

**E** Egham campus

FT (Full-time) PT (Part-time) 12/24 (Months duration)

### Research facilities

Research facilities are supported by excellent holdings in the library and archival collections. You will be able to extend your creative practice in a range of professional-standard rehearsal studios that include the substantial Victorian Boilerhouse, and the Caryl Churchill Theatre, a purpose-built 178-seat studio space. You will also benefit from our partnerships with the wider cultural sector and collaborations with artists and theatremakers. Workshops, lectures and platform discussions are regularly offered to postgraduates featuring leading playwrights, directors, choreographers and practitioners. In the recent past, these have included Kwame Kwei-Armah, Toby Jones, Phyllida Lloyd, Vicky Featherstone, David Greig, Winsome Pinnock, Simon Stephens, Tim Crouch, Oliver Frlić, Lola Arias, Martin Crimp and Mark Ravenhill.

### Your future career

Our graduates have an excellent record of employment, with the skills they picked up during their course having enabled them to achieve their ambitions. Recent students have entered careers including Assistant Director at the BBC, Assistant Director at Schauspielhaus Hamburg, Script Editor at Scottish Media Group, and lecturing posts at universities in the UK and USA.

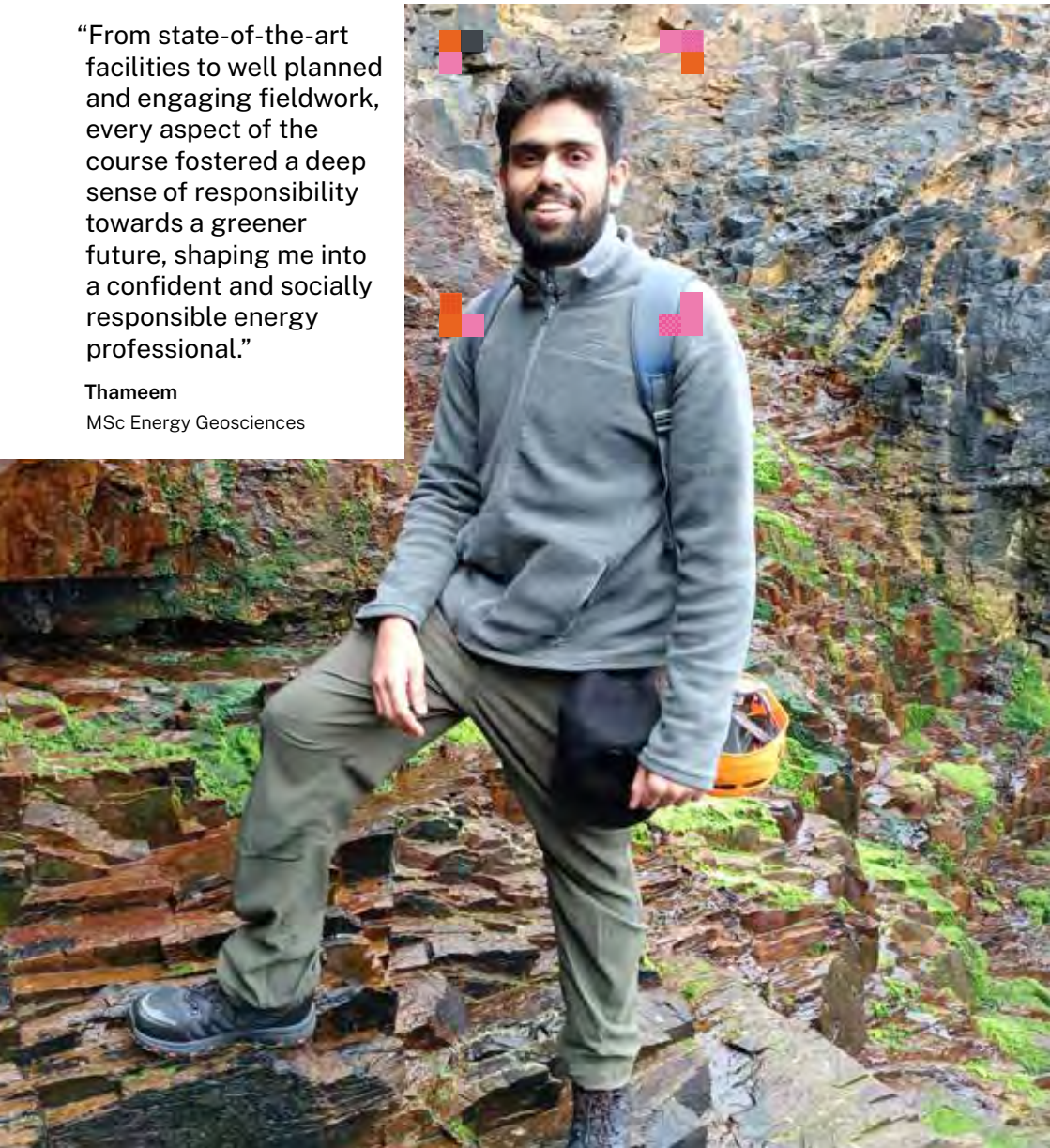
# Earth Sciences

As one of the leading centres of Earth Sciences research and teaching, our reputation and collaborations span the globe. We investigate the past, present and future of Planet Earth – from its building blocks to its natural resources to its inhabitants.

“From state-of-the-art facilities to well planned and engaging fieldwork, every aspect of the course fostered a deep sense of responsibility towards a greener future, shaping me into a confident and socially responsible energy professional.”

**Thameem**

MSc Energy Geosciences





## Profile

- Our research is based in three centres: Centre for Energy and Resources (CERES), Centre of Climate, Ocean and Atmosphere (COCO), and Centre of Dynamic Earth and Solar System (CEDESS). This framework encourages and promotes multidisciplinary activity and supports researchers.
- 88% of our research is rated world-leading or internationally excellent in the most recent Research Excellence Framework (REF 2021).
- Our world-class facilities include laboratories for geochemical and greenhouse gas analysis, sedimentology and palaeontology, and analogue modelling laboratories for recreating earth structures.
- We offer high quality fieldwork, in some of the best geological locations in the UK and overseas.
- Through our teaching and research we maintain collaborative links with industrial and commercial partners, providing research support and employment for our graduates.
- We're part of the School of Life Sciences and the Environment, advancing knowledge and changing lives.



Fieldwork develops important skills for earth scientists

# 100%

research environment is rated world-leading or internationally excellent

(Research Excellence Framework, 2021)

# Top 10

UK Earth Science department

(The Guardian University Guide, 2025)

## Courses

MSc Energy Geosciences

MSc Environmental Diagnosis and Management

MSc Engineering Geology and Hydrogeology

MSc Earth Sciences by Research

MPhil/PhD

## Follow us



@RHULEarthSci



RHULEarthSci



rhulearthsciences



rhul-earthsci

## Tuition fees 2025/26

UK students\*: £11,600-£14,400 per year

International students\*: £23,700-£26,100 per year

\* Fees may vary per course, please check website for full details.

For research degree tuition fees please see website.

## More course information and contacts

[royalholloway.ac.uk/courses](http://royalholloway.ac.uk/courses)

## More department information

[royalholloway.ac.uk/earthsciences](http://royalholloway.ac.uk/earthsciences)

## Entry requirements and how to apply

See page 106.

## MSc Energy Geosciences

**E** Egham campus, FT/PT, 12/24 months

An ideal training for a career in the hydrocarbon and renewable industry and growing low carbon energy industry. Throughout the course, you will experience a diverse learning experience through theoretical classes, computer-based practicals as well as field classes. You will cover aspects of geoscience and subsurface characterisation applied to production of sustainable energy as well as storage of CO<sub>2</sub> and energy resources. The course is partly taught by, and closely associated with, a large number of international energy companies as well as many local consultancies. A PG Certificate in Energy Geosciences is also available for direct entry.

### Example modules

- Subsurface analysis
- Sedimentology and stratigraphy
- CCS and subsurface energy storage
- Renewable energy



Dr Rebecca Fisher is involved in research measuring atmospheric methane using state of the art equipment in the greenhouse gas research group.

## MSc Environmental Diagnosis and Management

**E** Egham campus, FT/PT, 12/24 months

Studying global environmental and ecological issues of contaminated land, water quality, air pollution, and waste management, mitigated by legislation to reduce impacts on health and climate. Through modules, case studies, study visits and a research project you can develop critical scientific understanding involving practical training in the field and geochemical analysis and computing laboratories, with significant training and/or supervision by senior professional practitioners. Supported by our outstanding network in the environmental sector, together with the excellent training provided, this course has a long track record of success for graduate employment and research training. The Atkins Prize for best research project, Syngenta Prize for most improved performance, and Arup Prize for best performance overall, are awarded annually.

### Example modules

- Contaminated land case study
- River Thames basin case study
- Royal Holloway campus air quality case study

## MSc Engineering Geology and Hydrogeology

**E** Egham campus, FT/PT, 12/24 months

Explore the scientific knowledge, tools and skills needed to combat the effects of climate change and become fluent in all aspects of subsurface work in an area of growing demand from key industry employers. Course modules are carefully curated by academic experts and an advisory board of 14 leading environmental and engineering consultancies. You will benefit from research-led teaching and holistic training in the disciplines of Engineering Geology and Hydrogeology, applying geological information in solving practical problems and harnessing natural resources sustainably. Your course includes dedicated study of professional practice and numerous site visits, as well as two weeks of residential fieldwork in the UK Peak District and Greece.

### Example modules

- Site investigation (including GIS training)
- Rock and soil mechanics
- Hydrogeology and fluid flow

### Research opportunities

You can apply for an MSc by Research, MPhil, or PhD within a wide range of projects aligned with the remit of our three main research themes. Research projects may be fully supported by industry funding or research councils,

Royal Holloway scholarships or self-funded. All staff can accept suitably qualified research candidates who qualify for scholarships or who have alternative means of support. To discuss potential projects, please email the academic staff member you are interested in working with. A full list of staff and their research interests is available on our website.

### Research facilities

Research facilities include instruments for monitoring and quantifying atmospheric greenhouse gases and pollutants, an Isotope thermal ionization mass spectrometer and Neptune multi-collector mass spectrometer for measuring non-traditional isotope in natural materials, world-class trace-metal free laboratories for the preparation of materials for geochemical analysis, a laser ablation ICP-MS, an elemental analysis suite featuring an ICP-AES, ICP-MS and Elementar bulk organic analyser, a Sea Ice Simulator, organic geochemistry and experimental chemistry laboratories, analogue modelling laboratories, and industry-standard seismic and potential field processing and software. Research partners include UK and international universities and organisations, and very strong links with multinational energy companies. We also have close links with the Natural History Museum and Royal Botanic Gardens, Kew.

### Research interests

#### The Centre for Energy and Resources

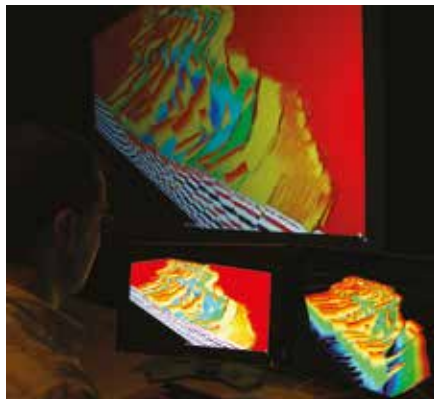
examines critical issues of energy production and dissemination, with a strong focus on developing new approaches to storing hydrogen and compressed gas and energy in the subsurface, and on deploying clean energy technologies to mitigate climate change.

#### The Centre of Climate Ocean and Atmosphere

seeks to understand how environmental processes interact to control the Earth's climate system, from cutting-edge efforts to trace and mitigate greenhouse gas emissions to the spread of atmospheric pollutants; the long-term controls on our planet's carbon cycle, and the emergence and demise of life on Earth.

#### The Centre of Dynamic Earth and Solar System

examines the evolution of the deep Earth and solar system, including the impact of planetary processes on natural hazards, water resources and health; searching for geological processes on other planets; and investigating the origins of extraterrestrial water and organic matter on Earth.



Extensive research facilities

### Your future career

Our Masters degrees have earned a strong reputation in industry for training highly employable graduates within the sector. Our MSc Energy Geosciences programme has been taught since 1985, and we are recognised worldwide as one of the energy industry's excellent training facilities, having helped graduates from across the world progress into rewarding careers. There is huge demand for well-qualified energy geoscientists, and you'll graduate as a highly desirable candidate for employers in a variety of energy sectors.

Our MSc Environmental Diagnosis and Management has outstanding links with the environmental sector through the contributions of professional practitioners, case studies, study visits, and research projects. We have new employer placement links each year and particularly strong links with Arup, Atkins, CEH Wallingford, and Syngenta. The MSc offers excellent vocational and research training and career preparation for environmental jobs, research or academia. Graduate destinations include Arup, Atkins, AECOM, Golder and WSP.

Our MSc Engineering Geology and Hydrogeology graduates have continued to find employment in AECOM, Mott MacDonald, Atkins, and other world-leading environmental and engineering firms where market demand for well qualified graduates is intense.

# Economics

In the Department of Economics at Royal Holloway, world-class research and innovation bring a global perspective to our postgraduate programmes. Students are taught by internationally leading experts in a stimulating, nurturing and inclusive environment. Informing our teaching, our research is focused on many of the global challenges facing the world today, and we work closely with industry, government, business, and charities to ensure its relevance and impact.

“I’m completing a graduate programme at Lloyds Banking Group in London. Studying at Royal Holloway has definitely prepared me and made me confident in my capabilities, no matter what my job throws at me.”

**Boglarka**

MSc Finance





## Profile

- Featured in the top 10 UK universities for research output (THE, REF institutions ranked by subject, 2022).
- Strong links to government, business and the banking and financial sectors.
- All students benefit from dedicated employability training.
- You'll benefit from individual support and regular meetings to guide your studies.
- We are part of the School of Law and Social Sciences, focusing on social inquiry, democracy, justice, human rights and economic development.



# 98%

research output is rated world-leading or internationally excellent

(Research Excellence Framework, 2021)

## Courses

MSc Computational Finance  
 MSc Computational Finance (Year in Industry)  
 MSc Corporate Finance  
 MSc Economics  
 MSc Finance  
 MSc Global Health: Economics and Policy  
 MPhil/PhD

## Follow us



@RHULECON



RHULecon

## Tuition fees 2025/26

UK students\*: £11,600-£16,100 per year

International students\*: £22,300-£26,100 per year

\* Fees may vary per course, please check website for full details.

For research degree tuition fees please see website.

## More course information and contacts

[royalholloway.ac.uk/courses](https://royalholloway.ac.uk/courses)

## More department information

[royalholloway.ac.uk/economics](https://royalholloway.ac.uk/economics)

## Entry requirements and how to apply

See page 106.

## **MSc Computational Finance**

### **E Egham campus, FT/PT, 12/24 months**

This innovative course is offered jointly by the Department of Computer Science (see page 24) and the Department of Economics. The course introduces you to modern finance theory and methods for data analysis applied to financial modelling and predictions. You'll acquire skills demanded by jobs in asset pricing, risk management and quantitative trading.

#### **Example modules**

- Data analysis
- Foundations of finance
- Business intelligence
- Machine learning

## **MSc Computational Finance (Year in Industry)**

### **E Egham campus, FT, 24 months**

Refine your skills and knowledge by electing to spend a year in industry where you will be able to integrate theory and practice and gain real business experience. In the past, our students have secured placements and benefited from strong industry connections.

#### **Example modules**

See above and [royalholloway.ac.uk/courses](http://royalholloway.ac.uk/courses)

## **MSc Corporate Finance**

### **E Egham campus, FT, 12 months**

This course provides you with a critical understanding of corporate finance and entrepreneurship finance, as well as innovation research and the processes and practices of new venture finance. A particular focus will be on understanding the different roles and financial

functions in venture capitalist and private equity firms, in entrepreneurship, consultancy and mergers and acquisitions.

This degree is designed to help you prepare for the Chartered Financial Analyst (CFA) exam.

#### **Example modules**

- Corporate finance
- Financial accounting and reporting
- Corporate risk and governance
- Fixed income securities and derivatives

## **MSc Economics**

### **E Egham campus, FT, 12 months**

Designed to equip you with the tools of a modern economist, including quantitative skills, understanding of advanced economic theory and the ability to conduct independent research. You will study a variety of topics including macroeconomics, public policy evaluation methods and game theory. On completion of the 12 months, you will be ready for your chosen career path, whether in the private sector (e.g. banking or consulting), in government, or further research in economics.

#### **Example modules**

- Microeconomics theory
- Macroeconomics
- Econometrics
- Decision theory and behaviour
- Inequality, development and health

## **MSc Finance**

### **E Egham campus, FT, 12 months**

Get equipped with the skills required for a career in the broad area of finance, including



London - just 40 minutes away by train - and its financial district



financial analysis and management, insurance, management consultancy, mergers and acquisitions, risk control, and sales trading. It will provide you with training from a practical as well as a theoretical point of view with the aim of enhancing your employability.

Through your studies you will gain a strong grounding in core areas of finance and have the flexibility to specialise in areas such as fixed income securities and derivatives, investment and portfolio management or private equity.

#### Example modules

- Foundations of finance
- Corporate finance
- Quantitative methods for finance
- Private equity

### MSc Global Health: Economics and Policy

#### **E** Egham campus, FT, 12 months

Receive training in modern health economics from a global perspective, covering topics such as inequality, development, environment, public healthcare delivery, among others. You'll learn about health- and public policy that will prepare you for working for international organisations, government, NGOs, consultancies and think tanks.

#### Example modules

- Economics of health
- Quantitative methods for health economics
- Long-term trends in health and health policy
- Behavioural health economics

#### Research opportunities

Our department produces world-class research across the main fields of the discipline and has a

particular strength in applied work.

Our MPhil and PhD programmes will provide you with rigorous training and experience in economic analysis in a small selected community, thus ensuring high levels of interaction and support between research students and staff.

#### Our research areas include

- Centre for Robust Inference in a Digital Economy (RIDE)
- Centre for the Economics of the Household (EcHo)
- Centre for Macroeconomic and Labour Economics (MaLEc)
- Centre for Mathematical and Theoretical Economics (MATE)
- Centre for Research in Economics Education (CREEd)

### Your future career

A postgraduate degree in economics has the potential to send your career soaring, and so we make it our priority to ensure that you are fully prepared before entering the job market. We provide a dedicated module on finding a job in the financial industry, advise all students on employability and organise a series of talks where professionals discuss what their job is really about, so that whatever career you choose you will have direction, conviction and the requisite knowledge to succeed.

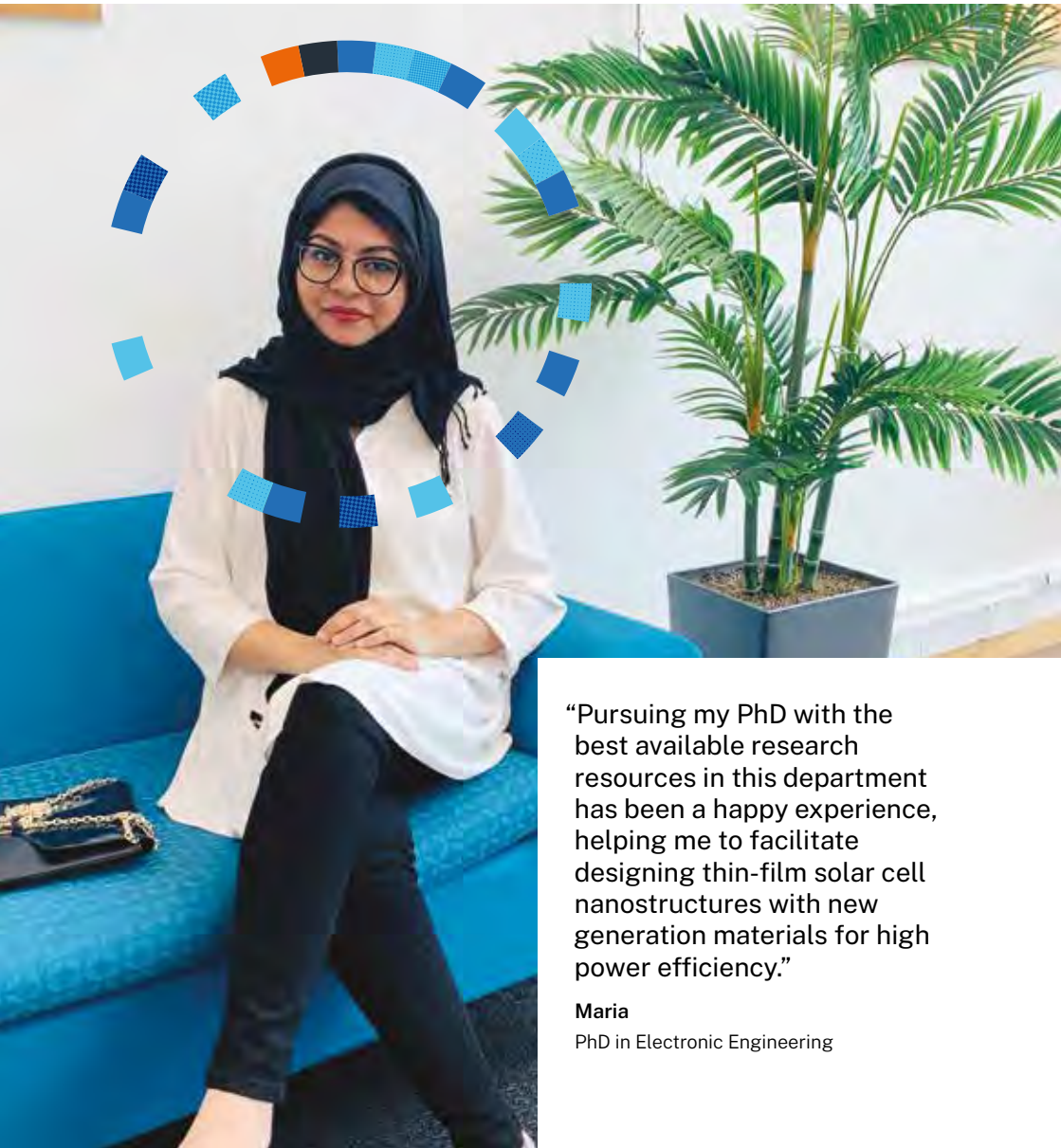
#### **E** Egham campus

FT (Full-time) PT (Part-time) 12/24 (Months duration)

[royalholloway.ac.uk/economics](http://royalholloway.ac.uk/economics)

# Electronic Engineering

Our stimulating environment for research and training equips graduates with the critical tools and qualifications needed to address the technological advances and challenges of global business and industry.



“Pursuing my PhD with the best available research resources in this department has been a happy experience, helping me to facilitate designing thin-film solar cell nanostructures with new generation materials for high power efficiency.”

**Maria**

PhD in Electronic Engineering



## Profile

- We research current and emerging electronic engineering trends in four main groupings: Voice, Audio and Biosignals; Nano-Electronics; Power Systems; Microwave Photonics and Sensors.
- Our purpose-designed building has advanced electronic engineering equipment.
- The department has an equality ethos, attracting a greater than UK average proportion of women students, within an inclusive environment.
- Our excellent location in the South East places us near many leading UK-based electronics companies.
- You'll be taught by experienced practitioners and academics drawing on academic theory, latest thinking and industry experience.
- Whichever Masters you choose, a strong focus on employability will help you to develop your skills to succeed in your chosen career.
- We're part of the School of Engineering, Physical and Mathematical Sciences, delivering world class fundamental research and impact.



The Beatrice Shilling Building

# 93%

research output is rated world-leading or internationally excellent

(Research Excellence Framework, 2021)



Creating technical solutions for an evolving world

## Courses

MSc Engineering Management  
 MSc Engineering Management with Cyber Security  
 MSc Advanced Electronic and Electrical Engineering  
 MSc Biomedical Electronic Engineering  
 MSc Microwave and Optical Fibre Communications  
 MSc Smart Power Systems  
 MSc by Research in Electronic Engineering  
 MPhil/PhD in Electronic Engineering

## Follow us



@RHElecEng



RHUL ElectronicEngineering

## Tuition fees 2025/26

UK students: £14,400 per year  
 International students\*: £23,700-£26,100 per year

\* Fees may vary per course, please check website for full details.

For research degree tuition fees please see website.

## More course information and contacts

[royalholloway.ac.uk/courses](http://royalholloway.ac.uk/courses)

## More department information

[royalholloway.ac.uk/electronicengineering](http://royalholloway.ac.uk/electronicengineering)

## Entry requirements and how to apply

See page 106.

### **MSc in Engineering Management**

**L** Central London, FT/PT, 12/24-60 months

You'll cover current and emerging engineering project management issues and the principles that underpin effective business strategies and outcomes. Balancing academic theory with practical opportunities, and the tools to manage sophisticated large, complex and multi-disciplinary projects, you'll explore scientific and engineering advances, from the science behind renewable energy to modern consumer technology design for the home.

### **MSc Engineering Management with Cyber Security**

**L** Central London, FT/PT, 12/24-60 months

This Masters is taught by experienced practitioners from the digital and information security sector. There is a growing global demand for graduates with specialist cyber security projects expertise and capabilities to address the emerging threats to digital and information security sectors. You'll develop an understanding of a broad range of cyber security and digital threats and project practices in industry ready for a career in modern digital and cyber security project-based environments.

### **MSc Advanced Electronic and Electrical Engineering**

**E** Egham campus, FT/PT, 12/24 months

With a varied and flexible curriculum informed by innovative research and current industrial needs, you can tailor the course to suit your career aspirations. You'll have the opportunity to integrate software, hardware, electronic and electrical engineering systems; VHDL to programme FPGAs; and sustainable power generation to meet future carbon neutral targets.

### **MSc Biomedical Electronic Engineering**

**E** Egham campus, FT/PT, 12/24 months

You'll focus on the electronic aspects of biomedical engineering, ranging from embedded electronic systems to machine learning. Using open-source tools for biosensing and neuroscience, you will work in a creative space with the aim of making brain-computer interfacing and other biosensors more accessible for rapid prototyping and delivery of products in the consumer landscape.

### **MSc Microwave and Optical Fibre Communications**

**E** Egham campus, FT/PT, 12/24 months

Microwave and optical fibre communication systems enable high-speed communication, used in our everyday life from home-based internet, smart mobile phones, machine-to-machine communication systems, and 'Everything Connected'. You'll focus on the usage of fibre optics and RoF communications in 5G/6G and beyond, as well as in areas such as space and defence. As one of the few UK institutions with the skills and resources to provide hands-on experience in this area, you'll join an active, postgraduate community linked with our unique microwave photonics and sensors research group.

### **MSc Smart Power Systems**

**E** Egham campus, FT/PT, 12/24 months

Examine the crucial changes in modern power systems today, as well as developments for a sustainable energy future. You'll be prepared for the large variety of jobs in the Power System sector, from smart meters and demand side management, to load forecasting, distribution and transmission, to energy generation, renewables and energy storage.

**"I would definitely recommend this degree to any new budding scientists or engineers who are looking to get into a management position within a company, as you'll be taught life skills through this MSc."**

**Natasha**

MSc Engineering Management





The sustainable energy rooftop lab at Shilling Building

### **MSc by Research in Electronic Engineering**

**E** Egham campus, FT/PT, 12/24 months

We welcome applications from prospective students wishing to work on projects of research interest to our academics, and applicants wishing to propose their own projects in conjunction with industry and our research interests.

### **MPhil/PhD in Electronic Engineering**

Academic staff and doctoral research students play an active role in our dynamic research culture, and many are working at the frontiers of knowledge in their research area, creating collaborations with industry and across departments to facilitate novel research. Please email our academic staff who are active in the research area you are interested in to discuss potential MPhil/PhD opportunities or an MSc by Research. Staff lists are available on our website.

### **Research Groups**

Our research is structured into four main groups:

- Audio, Biosignals and Machine Learning
- Nano-Electronics
- Microwave Photonics and Sensors
- Power Systems.

Our research groups provide a lively and interactive environment for our postgraduates, and researchers across other departments and industry.

### **Research facilities**

The rooftop of our building features a wind turbine and solar panels for research students

to conduct relevant projects. Our Microwave Photonics and Sensor (MPS) laboratory is equipped with the latest Microwave and Fibre Optics Communication systems and devices, and measurement equipment. Nano-Electronics research benefits from close proximity to the National Physical Laboratory, and other national laboratories.

### **Your future career**

Electronic Engineers are highly valued by employers for their technical knowledge, transferable skills and analytical as well as practical training.

Graduates of our Engineering Management courses have pursued successful careers across a range of industries. Roles in engineering sectors require professionals who can oversee the completion of a project, as well as those who take ownership for a specific aspect of a project, delivered to all stakeholders' satisfaction.

Our alumni have successfully entered into a wide range of professions and industries, making substantial contributions to multidisciplinary project teams and the financing, execution and delivery of projects. This has helped them progress through their organisations and into senior management positions or change career paths.

# English

Join us and you'll join one of the most dynamic departments of English in the country, offering expert teaching across a wide range of literary study.



"I absolutely loved my time studying my MA. The course was exciting, engaging, and challenging. The seminar leaders were second to none: exceptionally knowledgeable, encouraging, supportive and inspiring."

**Jen**

MA Victorian Literature, Art and Culture



## Profile

- All our staff are highly regarded scholars, writers and critics, with the quality of our research recognised in the most recent Research Excellence Framework, where 98% of it was found to be of world-leading or internationally excellent quality.
- You'll enjoy a varied and lively research culture in our department, whatever you study. The Centre for Victorian Studies and the London Old and Middle English Research Seminar (LOMERS) host research presentations from international scholars. Our 19th Century reading group, the Old and Middle English reading groups, along with readings from our Creative Writing students all allow you to engage with your new community and share experiences with others as passionate as you.
- We're part of the interdisciplinary School of Humanities, championing active engagement in a diverse world.



The library in the Emily Wilding Davison Building

# 1st

in the UK for world-leading or internationally excellent research

(THE REF rankings by subject, 2022)

# 2nd

in the UK for Creative Writing

(Complete University Guide, 2025)

## Courses

MA British Literature, Theatre, Cultures\*

MA Creative Writing

MA English Literature

MA English Literature: Medieval Studies

MA English Literature: Victorian Literature, Art and Culture

MA by Research

MPhil/PhD

\* New degree under development. Please see Drama, Theatre and Dance page 28 for full details.

## Follow us



@RHULEnglish



rhulenglish

## Tuition fees 2025/26

UK students: £11,600 per year

International students \*\*: £23,700 - £26,100 per year

\*\* Fees may vary per course, please check website for full details.

For research degree tuition fees please see website.

## More course information and contacts

[royalholloway.ac.uk/courses](http://royalholloway.ac.uk/courses)

## More department information

[royalholloway.ac.uk/english](http://royalholloway.ac.uk/english)

## Entry requirements and how to apply

See page 106.

## MA Creative Writing

### **L** Central London, FT/PT, 12/24 months

Develop your ability as a writer to a professional level, going beyond the personal and writing with an engaged sense of literary culture, its social role and contemporary practices. This MA is designed for poets, fiction writers and those interested in experimental non-fiction prose who are dedicated to their writing and want to see it in print. You will take one of four distinct pathways: Fiction, New Narrative Writing, Poetry or Poetic Practice, working in small groups and with extensive individual attention. You will submit critical and creative coursework, and will undertake a final practical project and critical dissertation.

#### Example modules

- Fiction pathway
- Poetry pathway
- Poetic Practice pathway
- New Narrative Writing pathway
- Supplementary discourses
- Reading as a writer

## MA English Literature

### **E** Egham campus, FT/PT, 12/24 months

This course is ideal if you are interested in more than one period of English literature, or if you want to combine or juxtapose the literatures and genres of different periods. With a wide range of expertise in the department, you have the option to choose modules in Medieval literature, Shakespeare, Victorian literature, Modernism and contemporary literature. You will be taught

by highly regarded scholars, writers and critics who are engaged in research, writing ground-breaking books, talking to or writing in the national media, and providing expert advice to national and international bodies.

#### Example modules

- Arthurian literature and tradition in England
- King Lear and The Tempest
- Victorian London
- The Pre-Raphaelite revolution
- Modernist and contemporary literature

## MA English Literature: Medieval Studies

### **E** Egham campus, FT/PT, 12/24 months

This specialised pathway within the MA English Literature is taught by medievalists from English, History, and Languages, Literatures and Cultures. It offers an opportunity to explore the events, texts, objects, and culture of the Middle Ages from diverse angles and critical perspectives. You will develop your interests and expertise in the study of the Middle Ages, working with source material including artefacts, manuscripts, archives and printed sources. The course emphasises skills that are required for postgraduate research in this vibrant scholarly field, regardless of your chosen area of specialism.

On this pathway you'll take a selection of medieval modules carefully curated by the department, and write your dissertation on a medieval topic. Medieval Studies is available as a pathway within both English and History, and you can take a combination of English Literature and History modules on it.

#### Example modules

- Medieval narratives
- The literature of Medieval London
- Arthurian literature and tradition in England
- Byzantium and the Fourth Crusade
- Pilgrimage in the Medieval world

## MA English Literature: Victorian Literature, Art and Culture

### **E** Egham campus, FT/PT, 12/24 months

This specialised pathway within the MA English Literature fosters a critical understanding of the Victorian era through study of all its major cultural forms. The age's literature, visual arts and history are addressed by the course's taught modules to produce a comprehensive overview of the period from high Victorianism to the fin de siècle while the dissertation allows you to explore specialist research interests.

Boilerhouse Theatre



On this pathway you'll take a selection of Victorian modules carefully curated by the department, and write your dissertation on a Victorian topic.

Taught in one of the most flamboyant and beautiful buildings of Victorian Britain, and housing one of the finest private collections of Victorian art, you can enjoy a true immersion in a vibrant 19th-century atmosphere, supported by the exciting guest lectures and symposia of the Centre for Victorian Studies.

#### Example modules

- Victorian London
- The Pre-Raphaelite revolution
- Victorian Climates: writing empire and environments
- The 19th-century novel: contexts, theories, readers

#### MA by Research

##### **E** Egham campus, FT/PT, 12/24 months

Our MA by Research can serve as an alternative to the traditional taught MA, whether as a pathway to PhD study or as an independent research qualification. In the course of this one-year (or two-year part-time) degree, you will work towards a dissertation of up to 40,000 words. This is an extended independent research project pursued with the support of a dedicated supervisor who has expertise in the area that you choose to research. You will receive training in research skills, and have access to the wide range of other training opportunities available at Royal Holloway. While in this choice of degree pathway you will be working independently, you will have many opportunities to meet other MA students and to engage in the lively and dynamic research culture of the department both in central London and on our Egham campus in Egham.

#### Research opportunities

You can apply for places on our MPhil and PhD research programmes. Academic staff are happy to discuss research projects in advance of a formal application. Please contact our Director of Postgraduate Research or write directly to your proposed supervisor.

#### Research interests

Research supervision is provided in all the main areas of literary study, from Old and Middle English to 21st-century world literature, critical theory and creative writing. The department's major strengths are in Old and Medieval English,

the Early Modern, the 18th, 19th and 20th centuries, and creative writing with particular specialisms in Shakespeare, Swift, Sterne, Dickens, Browning, Hardy, George Eliot, Joyce, Beckett, in world and contemporary literature, critical theory, and the environmental and digital humanities. There are also thriving research interests in American and African-American literature, modernism, postmodernism and contemporary poetic theory and practice. Practice-based PhDs in various genres of creative writing and poetic practice are also available.

#### Research facilities

As well as the facilities available to our large postgraduate community on campus and in central London, the Institute of English Studies at Senate House is also a venue for conferences, research seminars and lectures by the world's leading English scholars.

In addition, the Humanities and Arts Research Institute, the Royal Holloway Picture Gallery with its magnificent collection of Victorian art, and research centres for Victorian Studies and Poetics add to the vibrancy of the department. Students are given training in research methods and information retrieval. Teaching for the MA Creative Writing takes place at 11 Bedford Square, Royal Holloway's London home, in the heart of Bloomsbury.

#### Your future career

The department has an impressive record for placing Masters graduates in academic jobs and in prominent positions outside the academy including internships in institutions such as the British Library, the Museum of London, the Dickens Museum, and the Victoria and Albert Museum. Other postgraduates have recently secured positions at major UK universities, Shakespeare's Globe and the National University of Ireland. The English department also prepares postgraduates for successful careers in a variety of other areas such as teaching, education, writing and journalism, the creative sector, art curatorship, publishing, administration and marketing.

**E** Egham campus   **L** Central London

FT (Full-time) PT (Part-time) 12/24 (Months duration)

[royalholloway.ac.uk/english](http://royalholloway.ac.uk/english)

# Geography

As a leading centre for world-class research, knowledge exchange and public engagement, we address the challenges facing contemporary culture, the economy and the environment.



“There’s a close community here actively researching the areas of Cultural Geography I’m interested in. It definitely opens up your mind to new ways of thinking, both about our current world, and its possible futures.”

**Georgia**

MSc Global Futures: Culture & Creativity



## Profile

- Geography is in the top tier of UK departments, consistently identified as one of the highest-performing departments in successive research assessments.
- We have been praised for our 'world-leading intellectual vision' and 'excellent record of PhD completion...and employability'. Our research has been singled out as overwhelmingly of 'internationally excellent' and 'world-leading' quality (REF 2021).
- We have over 30 members of academic staff and notable research concentrations in Quaternary science, social, cultural, and historical geography, the GeoHumanities, development studies, sustainability, and geopolitics.
- Ours is a vibrant postgraduate community of taught and research students drawn from across the world.
- We're part of the School of Life Sciences and the Environment, advancing knowledge and changing lives.



Environmental and social sustainability research

# 100%

research impact is rated world-leading or internationally excellent

(Research Excellence Framework, 2021)

# 5th

in the UK for research

(THE, REF Institutions ranked by subject, 2022)

## Courses

MSc Global Futures:

- MSc Global Futures: Culture and Creativity
- MSc Global Futures: Geopolitics and Security
- MSc Global Futures: Justice, Development and Sustainability

MRes Cultural Geography

MRes Geopolitics, Development, Security and Justice

MSc Past Climate and Environmental Change

MSc/Diploma Sustainability and Management

MSc Gender Studies and Global Futures (see website for details)

MPhil and PhD in all aspects of Geography

## Follow us



@RHULGeography



facebook.com/RHULGeography

## Tuition fees 2025/26

UK students\*: £9,800-£11,600 per year

International students\*: £20,800-£23,700 per year

\* Fees may vary per course, please check website for full details.

For research degree tuition fees please see website.

## More course information and contacts

[royalholloway.ac.uk/courses](http://royalholloway.ac.uk/courses)

## More department information

[royalholloway.ac.uk/geography](http://royalholloway.ac.uk/geography)

## Entry requirements and how to apply

See page 106.

## **MSc Global Futures**

**E** Egham campus/central London, FT/PT, 12/24 months

Explore the geographies of the changing world around us. You'll examine the relationships between place, space, identity, and activism and how they are evolving in response to the social, political, and environmental challenges we face. Combining core concepts from human geography and related disciplines with advanced humanities and social-science research methods training, the course will equip you with the ability to navigate a changing world and to shape its future. In addition to its strong conceptual and methodological curriculum, the course also offers innovative placements and research engagements with some of London's top cultural institutions and third-sector organisations.

Eligible for ESRC 1+3 funding.

During your Masters you can choose to specialise in one of three degree pathways, each of which offers a distinctive lens, and subject-specific modules, through which to examine our changing world, explore its fundamental challenges, and develop advanced research and analytical skills.

### **MSc Global Futures: Culture and Creativity:**

Focusing on key concepts in cultural and creative geographies, and how they illuminate the changing world around us. This pathway encourages you to reflect on how everything from technology and mobility, to politics and contested ideas of history and heritage, raise fundamental questions about our cultural identities and lives. You'll be equipped with a foundational understanding of how culture and creative practices can be deployed to tackle global issues and shape our shared future.

### **MSc Global Futures: Geopolitics and Security:**

Looking at geopolitical issues, and how they impact upon the security of individuals, cities, nations, and regions. You'll consider how era-defining issues such as political polarisation and global terror, and infrastructural and economic failure, might be understood and mitigated against using creative and critical geopolitical approaches. You will work with the leading researchers based in our Geopolitics, Development, Security and Justice (GDSJ) research group.

**MSc Global Futures: Justice, Development and Sustainability:** Understanding key issues of sustainable development in the Global South, and how they relate to ideas of social

and environmental justice. This pathway puts questions of development into global context and examines the relationship between development and planetary-scale challenges to the environment and society. You'll build a sound knowledge of how the concept of justice can help us shape a fairer and more sustainable future.

## **MSc Past Climate and Environmental Change**

**E** Egham campus, FT/PT, 12/24 months

Gain a critical understanding of long-term and abrupt climate and environmental changes during the Quaternary period via specialist analytical training in the classroom, laboratory and field. You will develop a thorough understanding of how high-precision, global palaeoenvironmental records and Quaternary data are utilised to understand Earth's changing climates, environments, and land systems.

## **MSc/Diploma Sustainability and Management**

**E** Egham campus, FT/PT, 12/24 months

This interdisciplinary Masters degree is taught jointly with the School of Business and Management (see page 14) and provides an advanced-level introduction to principles of environmental sustainability and corporate social responsibility. You'll develop the knowledge and skills to communicate with experts across a variety of backgrounds, helping you to become an expert in sustainability and an attractive prospect for business, governmental agencies and NGOs.

Eligible for ESRC 1+3 funding.

## **MRes Cultural Geography**

**E** Egham campus/central London, FT/PT, 12/24 months

This Masters draws together world-leading cultural geography research and teaching. You will have the opportunity to develop a deep and engaged research agenda through a longer-form dissertation, an excellent pathway to doctoral study. The degree combines core conceptual training in cultural geography and related disciplines with advanced research methods training designed to equip you to become an effective and professional researcher.

The course also offers innovative placements and research engagements with some of London's top cultural institutions.

Eligible for ESRC 1+3 funding.

## **MRes Geopolitics, Development, Security and Justice**

**E** Egham campus/central London, FT/PT, 12/24 months

Interest in issues of sustainable development, environmental justice, and geopolitics and security has never been so intense; these are the cornerstones of 'global challenges' research.

This degree is ideal for graduates looking to progress to PhD study in these vital areas. The course combines core concepts with intensive research methods training in the form of a long-form dissertation. Reflecting the collaborative nature of our research culture, the curriculum also includes the potential for innovative placements and research engagements with external partners.

Eligible for ESRC 1+3 funding.

### **Research opportunities**

For postgraduate research places leading to a PhD degree, please email the academic staff you are interested in working with to discuss potential projects. A full list of staff and their research interests is available on our website.

We have an excellent record in securing postgraduate funding from the AHRC, EPSRC, ESRC, Leverhulme Trust, and NERC doctoral training centres/partnerships. Please contact the department as early as possible to discuss funding opportunities.

### **Centre for Quaternary Research**

The QCR was established in 1990 and has become one of the leading international research centres in Quaternary science.

The QCR promotes interdisciplinary research based on three themes of major importance for understanding Quaternary environmental change: the dynamics of global change; the human dimension of environmental change; and advances in geochronology.

### **Geopolitics, Development, Security and Justice Research Group**

GDSJ works on vitally important issues across political, development and social geography and has interdisciplinary connections to international relations, development studies, anthropology, sociology, disaster studies; health and gerontology. It is committed to research both in and across the Global North and Global South including the UK and Overseas Territories, the Arctic and Antarctica, South and Southeast Asia, and Latin America.

## **Social, Cultural & Historical Geography Research Group**

SCHG has earned a distinctive record of research in the arts and humanities as well as the social sciences. SCHG has supported influential research projects on place, landscape and mobility, creative and collaborative geographies, transnational material cultures, visual cultures of exploration, print culture and travel, sacred spaces, and multi-culturalism.

### **Centre for the GeoHumanities**

Royal Holloway Centre for the GeoHumanities is a major initiative linking arts and humanities scholars and practitioners, geographers and the creative, cultural and heritage sectors. It showcases and fosters work on issues that have a strong geographical resonance, such as space, place, landscape and environment.

### **Research facilities**

Postgraduates have access to excellent research facilities on campus, including a suite of well-equipped laboratories (containing a Geospatial and Visual Methods Laboratory and state-of-the-art geochronology facilities), computing resources, and libraries, as well as world-class research facilities in London and a varied programme of workshops and events.

## **Your future career**

Our research links and collaborative studentship projects engage with a wide range of organisations, including London's major museums, the Body Shop, the British Geological Survey, the British Library, the Commonwealth Telecommunications Organisation, Natural England, the Ordnance Survey, the Royal Geographical Society (with IBG), the Royal United Services Institute, StreetInvest and WaterAid.

Our graduates have entered into a wide range of careers, within academia and beyond, including the British Library, the Department for International Development, commercial consultancy, NGOs, and the Royal Geographical Society (with IBG).

# Health Studies

The Department of Health Studies is advancing new and established areas of teaching and research excellence allied to healthy communities. By focusing on the wellbeing of people and the environment, we can engage with fundamental challenges and build healthy and resilient societies.

“Taught in world-class facilities at both Royal Holloway and Kew, this degree has given me skills in understanding the intricacies of global health and world challenges, and the confidence to become a steward of positive change.”

**Milo**

MSc Global Health: Food Security, Sustainability and Biodiversity





## Profile

- Our dynamic department builds on world-class research and interdisciplinary collaborations between Health Studies and a number of departments and schools at Royal Holloway. We also work with leading health and environmental organisations, including Royal Botanic Gardens, Kew and the Planetary Health Alliance.
- We offer a portfolio of closely-related Masters courses designed around supporting healthier populations and healthier environments.
- Our students will become leaders, innovators and influencers across boundaries, equipped to address the equity issues in our global community with a robust understanding of the links between healthy environments and healthy people.
- Our transdisciplinary approach will develop nature-based approaches to society's most pressing challenges through behavioural, technical and evidence based solutions that outline the value of good health to national and global economies.
- We're part of the School of Life Sciences and the Environment, advancing knowledge and changing lives.



## Top 20%

in the UK for world-leading research impact

(Research Excellence Framework, 2021)

Royal Botanic Gardens **Kew**<sup>†</sup>

<sup>†</sup> MSc Global Health: Food Security, Sustainability and Biodiversity is run in partnership with the Royal Botanic Gardens, Kew.

## Courses

MSc Global Health: Food Security, Sustainability and Biodiversity<sup>†</sup>

MSc Global Health: Human Health and the Environment

MA Global Health: Society, Culture and Behaviour

MSc Occupational Therapy (Pre-registration)

MPhil/PhD

## Follow us



@RHhealthstudies



rh\_healthstudies/

## Tuition fees 2025/26

UK students\*: £9,250-£11,600 per year

International students: £22,300 per year

\* Fees may vary per course, please check website for full details.

For research degree tuition fees please see website.

## More course information and contacts

[royalholloway.ac.uk/courses](http://royalholloway.ac.uk/courses)

## More department information

[royalholloway.ac.uk/healthstudies](http://royalholloway.ac.uk/healthstudies)

## Entry requirements and how to apply

See page 106.

### **MSc Global Health: Food Security, Sustainability and Biodiversity** [in partnership with Royal Botanic Gardens, Kew]

**E** Egham campus (and Kew), FT/PT, 12/24 months

Students on this exciting partnership degree will study at Royal Holloway and at Kew, learning from world leading experts at both institutions and spending approximately equal time at our main campus in Egham, Surrey and Kew's main site in Richmond, south west London.

You'll cover a range of topics at the intersections of environmental health and human health, addressing the crucial link between biodiversity, sustainable livelihoods and food security. You'll examine some of the most pressing issues affecting our planet, from deforestation and climate change to pollution and the threats from extinctions, intensive agriculture and a growing human population. You'll see new, innovative solutions in food security, and learn about innovative farming approaches, such as silvopasture, vertical farming and hydroponics. Graduates have an exciting future as the next generation of scientists, policymakers and leaders, ready to solve global sustainability challenges.

#### **Example modules**

- The role of biodiversity in human and environmental health
- Sustainability and human livelihoods
- Innovations in food security

### **MSc Global Health: Human Health and the Environment**

**E** Egham campus, FT/PT, 12/24/36 months

Explore existing and emerging challenges of global concern, taking an interdisciplinary approach to environmental change, climate instability, urbanisation, shifting geopolitics, changing demographics, sustainability, biodiversity and development. You'll work collaboratively to examine fundamental health challenges and the role of environmental factors and international agencies, with a choice to focus either on post-industrial societies of the Global North or on developing societies of the Global South, and to the realisation for all of the Sustainable Development Goals (SDGs). You'll study at our biodiverse campus in Surrey, and undertake fieldwork and hands on practical time to develop the skills needed for your chosen career. From opportunities to undertake research projects with partners around the world, to undertaking placements with policy, NGO, business and overseas academic partners, you'll

be equipped to help define and shape a more sustainable future for all.

#### **Example modules**

- Global health systems: Health systems and health protection
- Research skills for global health and planetary health–MSc pathway
- Advanced concepts in global and planetary health

### **MA Global Health: Society, Culture and Behaviour**

**E** Egham campus, FT/PT, 12/24/36 months

Shaping the health of populations across our one world society has never been more important, calling for specialists with the knowledge and skills to build cooperation, innovate and influence change across boundaries. You'll examine how culture, behaviour and governance, as well as environmental economic factors impact human and environmental health, affecting us all. You'll develop your ability to look beyond the immediate cause of ill-health to the underlying socioeconomic and environmental determinants, and connect knowledge to global health-related challenges and solutions. You'll be taught by international research leaders across a broad range of topics, with options to acquire real-world experience through projects and placements while developing your employability and transferable skills.

#### **Example modules**

- Key concepts in global and planetary health
- Research skills for global and planetary health (MA pathway)
- Social and environment determinants of health

### **MSc Occupational Therapy [Pre-reg]**

**E** Egham campus FT 24 months

Our pre-registration Masters leads to a professional qualification registered with the Health and Care Professions Council (HCPC) to practice Occupational Therapy.

Addressing contemporary issues like disaster management, sustainability, and global health, this two-year course will equip you with a range of skills to develop a rewarding career as an occupational therapist in roles focused on local solutions for healthy communities in the UK and globally.

You'll benefit from a combination of on-campus learning and placements to develop your practice-based experience and establish strong employment networks. You'll have the flexibility to explore your own interests, be inspired by stimulating teaching from experts, and develop



the skills needed to work with individual clients as well as community groups in the public and environmental health sector. Students on this course are required to complete a minimum of 1000 hours over four practice placements in two years, in line with the requirements of the Royal College of Occupational Therapists and the World Federation of Occupational Therapists (WFOT, 2016)\*.

\* Our Occupational Therapy course is validated by the Health and Care Professions Council and accredited by the Royal College of Occupational Therapists; hence this degree is also recognised by the World Federation of Occupational Therapists.

### Learning environment

Our Masters degrees connect knowledge to global health-related challenges, and solutions based around creative and flexible thinking. Each course includes experiential learning, fieldwork and opportunities to connect with a variety of networks to develop community engagement skills. You'll learn to work independently and in teams, including interdisciplinary settings, developing relevant skills for a rewarding career promoting the value of health for communities and our environment. Teaching and learning are informed by the active research of staff, particularly in the areas of: global health, planetary health, health risk (in particular from infectious disease), health in developing regions, infodemiology, critical

health geopolitics and international health policy, health evaluation and metrics, food security, biodiversity and sustainable living.

### Research opportunities

We welcome applications for postgraduate research places leading to a PhD. Please email the member of academic staff you are interested in working with to discuss potential projects. You'll find staff details on our website.

### Research facilities

The department has a wide range of research facilities and we are located on a beautiful campus with extensive areas of natural habitat for fieldwork. We are also a short distance from Sites of Special Scientific Interest.

### Your future career

You'll graduate with the knowledge, transferable research and employability skills that will make you a highly desirable candidate for work in a variety of sectors. From roles in public and environmental health, charity sector, community and environmental development projects, biodiversity and agri-technology, and occupational therapy, your degree can lead you to a rewarding career in a diverse world.

# History

The Department of History at Royal Holloway is an enthusiastic community of students and internationally recognised academics at the forefront of research and methodological innovation. Our innovative programme of taught and research degrees is designed to inspire and challenge.



“My time at Royal Holloway in MA History has been an incredibly enriching experience. The modules I’ve taken, taught by encouraging academics, have challenged my thoughts and allowed me to develop my own arguments and perceptions.”

**Julie**  
MA History



## Profile

- We're one of the largest and liveliest History departments in the UK, yet our size doesn't mean that you'll get lost in a crowd. We're committed to giving individual attention to everyone in our postgraduate community.
- There are currently over 40 full-time academic staff in the department, a number of research fellows, and a postgraduate community of almost 200 students.
- We've got a strong research tradition; the international quality of our research has been recognised in all of the UK's research excellence exercises, and as a student with us you'll benefit from that expertise.
- Across the vast range of our research areas, we've got particular strengths in social, cultural, and gender history, the history of ideas, as well as a notable range of countries, periods, and approaches.
- We're part of the interdisciplinary School of Humanities, championing active engagement in a diverse world.



MA Public History students on the rooftop of Hampton Court Palace during a field trip.

# 100%

of research impact is world-leading or internationally excellent

(Research Excellence Framework, 2021)

# Top 25

in the UK for research quality

(Complete University Guide, 2025)

## Courses

MA History: Crusader Studies

MSc Gender Studies and History

MSc Gender Studies and History and Socio-Legal Studies

MA History

MA History: Gender Histories

MA History: Histories of Conflict and Violence

MA Holocaust Studies

MA Late Antique and Byzantine Studies

MA History: Medieval Studies

MA Public History

MA by Research

MPhil/PhD

## Follow us



@RHULHistory



history.royal.holloway

## Tuition fees 2025/26

UK students: £11,600 per year

International students\*: £20,800 - £26,100 per year

\* Fees may vary per course, please check website for full details.

For research degree tuition fees please see website.

## More course information and contacts

[royalholloway.ac.uk/courses](http://royalholloway.ac.uk/courses)

## More department information

[royalholloway.ac.uk/history](http://royalholloway.ac.uk/history)

## Entry requirements and how to apply

See page 106.

## MA History

### **E** Egham campus, FT/PT, 12/24 months

This course provides a thorough training in the study of History across a wide range of periods and themes. Modules cover gender and cultural history, British, European and World history, as well as Hellenic studies. You will also take a wide-ranging methodology and skills module that provides instruction in historical research and develop transferable skills, and complete a supervised dissertation.

#### Example modules

- (Micro)Histories of race in North America
- New Imperial Histories: Britain's Empire Reassessed
- Looking at the Victorians: visual and material culture in Britain, 1837-1901

## MA History: Gender Histories\*

### **E** Egham campus, FT/PT, 12/24 months

Taking advantage of Royal Holloway's longstanding research specialism in gender and women's studies, the MA History: Gender Histories offers you the opportunity to gain a detailed insight into many aspects of gender history across a variety of periods. You will also take a wide-ranging methodology and skills module and complete a research-based project.

#### Example modules

- Women, the Crusades and the frontier societies of medieval Christendom
- Breaking Waves: histories of feminism in Britain
- Narrating queer gender and sexuality in the 20th century

## MA History: Medieval Studies\*

### **E** Egham campus, FT/PT, 12/24 months

This specialised pathway of the MA History degree offers an opportunity to explore the history, texts, objects, and culture of the Middle Ages from many different angles and critical perspectives. You will develop your interests and expertise in the study of the Middle Ages, working with source material including artefacts and manuscripts as well as archives and printed sources. The Medieval Studies pathway is available in both English and History, and students can take a combination of modules from either discipline as part of it.

#### Example modules

- Pilgrimage in the Medieval World
- Medieval Narratives
- The Literature of Medieval London

## MA History: Histories of Conflict and Violence\*

### **E** Egham campus, FT/PT, 12/24 months

The MA History: Histories of Conflict and Violence pathway examines history across a range of centuries and cultures with a particular focus on conflict and violence. You will also take a wide-ranging methodology and skills module and complete a research-based project.

#### Example modules

- Recording the Crusades: the memory and legacy of the Crusades
- Transnational Holocaust
- History of terrorism

## MA History: Crusader Studies\*

### **E** Egham campus, FT/PT, 12/24 months

Designed for students who want to pursue an advanced interest in crusading history. The pathway offers you an understanding of the context, and the ideology that underpinned the Crusades as well as its modern day resonances. In addition to taught modules you will complete a supervised dissertation.

#### Example modules

- Louis IX, the Mamluks and the Mongols
- Recording the Crusades: the memory and legacy of the Crusades
- Women, the Crusades and frontier societies of medieval Christendom, 1000-1300
- Byzantium and the Fourth Crusade

## MA Public History

### **E** Egham campus/central London, FT/PT, 12/24 months

This masters is a unique gateway to the heritage sector and popular media, with an emphasis on applied practice underpinned by rigorous historical research and analysis. You will engage with museum curators, public archivists, publishers, and television and radio producers, while gaining practical skills of historical interpretation and communication. You will also take a wide-ranging methodology and skills module and complete an innovative and public-facing research-based project.

#### Example modules

- Pathways to the past: public history in theory and practice
- Nothing about us without us: the power of oral history
- Communicating History: radio, podcasts and social media

## MA Holocaust Studies

**E** Egham campus/central London, FT/PT, 12/24 months

This is a globally unique interdisciplinary MA, taught out of our Holocaust Research Institute, which will appeal to students from a wide range of disciplines including History, English, Modern Languages, Media Arts and others. Experts from the Department of History work with colleagues across the university to deliver a research-supported degree. Your work will culminate in a supervised dissertation.

### Example modules

- The Holocaust: history and debates
- Representing the Holocaust in British and American literature
- Film, television and the Holocaust
- A transnational Holocaust

## MA Late Antique and Byzantine Studies

**E** Egham campus/central London, FT/PT, 12/24 months

This intercollegiate University of London MA is ideal for those interested in progressing to doctoral research in Late Antique and Byzantine studies, relating the history of Late Antiquity and Byzantium to the wider world. As well as completing a supervised dissertation, you will have the opportunity to study modules at a number of University of London colleges.

### Example modules

- Elementary Greek palaeography
- Living in Byzantium: material culture and built environment
- Byzantium and the First Crusade
- Byzantium and the Fourth Crusade

## MA by Research

FT/PT, 12/24 months

This course is intended to give you scope to explore your area of interest in depth, test out a possible research topic, and learn the skills of extended scholarly writing. You will write a research dissertation of up to 40,000 words supervised on a one-to-one basis.

### Research opportunities

As well as regular guest seminars throughout the year, History postgraduates at Royal Holloway run a monthly research seminar. This provides a supportive environment for you to try out your research findings.

Our leading research centres provide opportunities for innovative, interdisciplinary research via lectures, conferences and

workshops as well as promoting collaborative and consultation roles with partners including NGOs, government, the media, heritage sites and museums.

Research centres include the Holocaust Research Institute, the Hellenic Institute (and its Centre for Greek Diaspora Studies), the Centre for the Study of the Body and Material Culture, the Bedford Centre for the History of Women and Gender, the London Centre for Public History and Heritage, the Centre for Global South Asia and the Conflict, Violence and Terrorism Research Centre.

To find out about MPhil or PhD study, please contact our Director of Postgraduate Research or your proposed supervisor.

### Research facilities

You will have access to some of the richest historical research facilities in the world. In addition to our library, you can access the National Archives, British Library, German Historical Institute, Senate House Library, Institute of Historical Research, Institute of Classical Studies and Warburg Institute. You can also draw on Royal Holloway's archives, a unique resource which contains some of the earliest records relating to the history of higher education for women.

## Your future career

Our MA graduates have embarked on a range of rewarding careers, making excellent use of the skills provided by their postgraduate studies. Destinations include PhD programmes, the legal profession, management-level banking and business, the diplomatic service, the fast-track civil service and local government, teaching at school and college level, television production companies, and archives and heritage organisations such as the National Archives, the Houses of Parliament, the National Trust, the Imperial War Museum and a range of medium-sized local museums.

# Information Security Group

The world-leading Information Security Group is dedicated to advanced research and education in information and cyber security. It is at the forefront in the development of highly secure communications and computer systems, and offers independent expertise in a field where trust and integrity are paramount.

## Profile

- The Information Security Group (ISG) offers a unique national resource for the training of cyber security specialists taught by leading cyber security experts from industry and government.
- We research systems security, cryptography, application security, critical infrastructure protection, and socio-technical and organisational aspects of information security.
- Royal Holloway has been recognised as a UK Government Academic Centre of Excellence in

Cyber Security Research (ACE-CSR) and has a gold award from the National Cyber Security Centre (NCSC) as a UK Academic Centre of Excellence in Cyber Security Education (ACEs-CSE). Our MSc has NCSC-certified status.

- Our Smart Card & IoT Security Centre conducts specialist training and research.
- We're part of the School of Engineering, Physical and Mathematical Sciences, delivering world class fundamental research and impact.



“I chose Royal Holloway because it’s one of the respected and recognised information security groups in the world. The lecturers are absolutely brilliant, always ready to share information and discuss with students.”

**Ayobami**

MSc Information Security

## MSc Information Security

**E** Egham campus, FT/PT, 12/24-60 months

The MSc is an interdisciplinary course taught by the ISG, and cyber security experts from industry. It introduces the technical, human and legal aspects of Information Security and is regarded as a leading qualification for anyone seeking a career in cyber security. Students can complete the MSc over one year full-time, two years part-time or three-five years (CPD). A Year in Industry variant is also available, studied over two years full time.

## MSc Applied Data Science and Cyber Security

**E** Egham campus, FT, 12 months

This conversion course enables students with little prior exposure to programming, machine learning or cyber security to prepare for a career in the growing data science and information security industry. The course introduces you to a variety of languages essential to Data Science, and how to use different software packages. You'll also build a sound knowledge of cyber security and data privacy, including the particular privacy challenges faced by many data science applications.



**PhD in Information Security****FT 3 years**

We have a thriving PhD programme in areas such as the design of cryptographic algorithms and protocols, network security, smart cards, access control, security management, and the integration of security techniques into specific applications. Please email academic staff you are interested in working with to discuss three-year, research based PhD opportunities.

**MSc Cyber Security****Distance Learning, 24-60 months**

The MSc Cyber Security is delivered online in partnership with the University of London and Coursera. The course is supported by members of the ISG and approved information security professionals, including distinguished graduates of our MSc. Support is provided through online forums via a web-based virtual learning environment. Students can expect to join an integrated network of information security professionals studying the MSc concurrently from many countries worldwide, presenting opportunities to exchange experiences and perspectives. You are not required to attend at Royal Holloway campus at any stage of the distance learning course. The degree is awarded directly by the University of London, of which Royal Holloway forms part. More details of online study, fees and how to apply are at: [london.ac.uk/study/courses/postgraduate/msc-cyber-security](https://london.ac.uk/study/courses/postgraduate/msc-cyber-security)

**Your future career**

The ISG has over 4,000 alumni for whom 'studied at Royal Holloway' has become a recognised and highly-respected badge among Information Security professionals worldwide. Our graduates are highly sought after and have gone on to forge successful careers in a wide range of sectors.

# 34 years

of pioneering research and education excellence in Information and Cyber Security

**Courses**

MSc Information Security

MSc Information Security with a Year in Industry

MSc Applied Data Science and Cyber Security

MSc Cyber Security (Distance Learning)\*

MPhil/PhD Information Security

\* For details on Distance Learning see [london.ac.uk/study/courses/postgraduate/msc-cyber-security](https://london.ac.uk/study/courses/postgraduate/msc-cyber-security)

**Follow us**

@isgnews



ISGofficial

**Tuition fees 2025/26**

UK students: £14,400 per year

International students: £31,100 per year

For research degree tuition fees please see website.

**More course information and contacts**

[royalholloway.ac.uk/courses](https://royalholloway.ac.uk/courses)

**More department information**

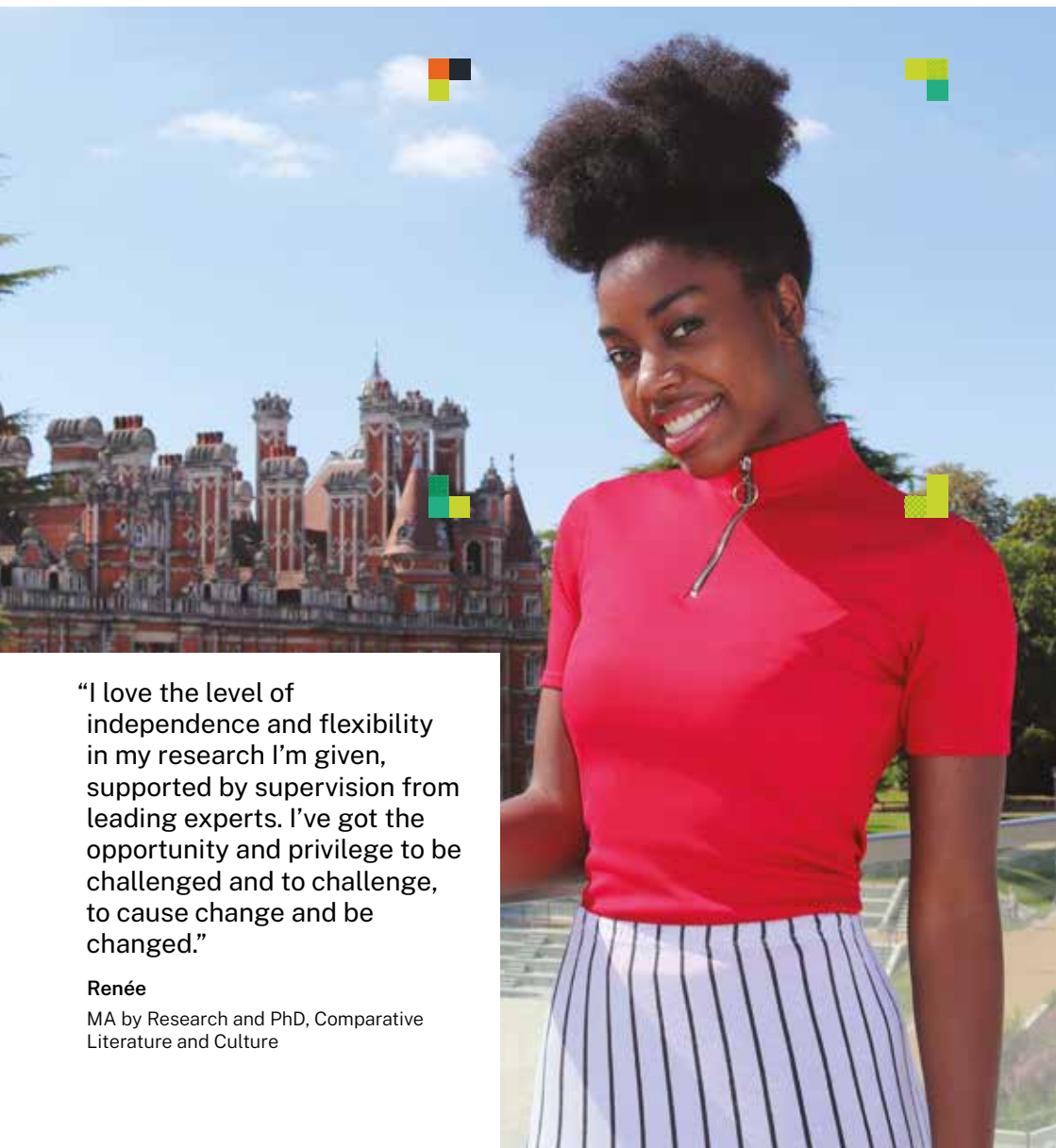
[royalholloway.ac.uk/isg](https://royalholloway.ac.uk/isg)

**Entry requirements and how to apply**

See page 106.

# Languages, Literatures and Cultures

Our Department of Languages, Literatures and Cultures brings together French, German, Hispanic Studies, Italian and Comparative Literature and Culture. We offer teaching and research excellence with a commitment to interdisciplinary study.



“I love the level of independence and flexibility in my research I’m given, supported by supervision from leading experts. I’ve got the opportunity and privilege to be challenged and to challenge, to cause change and be changed.”

**Renée**

MA by Research and PhD, Comparative Literature and Culture

## Profile

- We pride ourselves on being at the centre of a thriving research culture, and provide supervision across literature, cultural history, film, visual art and philosophy in our four language areas and beyond.
- We encourage you to participate in intellectual activities in the department and in the School of Humanities more broadly. These include reading groups, postgraduate research work-in-progress sessions, and a Postgraduate Colloquium, in which research students deliver papers and hear from a renowned keynote speaker.
- We're part of the interdisciplinary School of Humanities, championing active engagement in a diverse world.



Bautzen, Germany by student Hannah Marshall

# 5th

in the UK for overall research

(THE, REF 2022 by Grade Point Average)



5 distinct fields combine into  
1 interdisciplinary department

## Courses

MA by Research  
Comparative Literature and Culture  
French  
German  
Hispanic Studies  
Italian

MPhil/PhD

## Follow us



@LLC\_RHUL



modlangsrhul



llc\_rhul

## Tuition fees 2025/26

UK students\*: £4,786 per year

International students: £25,500 per year

\* UK tuition fees for research courses are set annually in spring by UKRI and may increase. Please check website for updates.

## More course information and contacts

[royalholloway.ac.uk/courses](https://royalholloway.ac.uk/courses)

## More department information

[royalholloway.ac.uk/languages](https://royalholloway.ac.uk/languages)

## Entry requirements and how to apply

See page 106.

## MA by Research

### **E** Egham campus, FT/PT, 12/24 months

This flexible degree offers students the chance to undertake independent, but closely-supervised, research work accompanied by targeted research training. Working closely with a specialist supervisor, or supervisors, you will develop a clearly defined research topic and complete a 30,000-40,000 word dissertation which may also lay the foundations for a PhD project. In addition, you will undertake a taught module designed to provide you with knowledge of a range of historical and modern theoretical approaches to the study of literature, culture and the visual arts.

## Comparative Literature and Culture

Comparative Literature and Culture provides the opportunity for you to explore global culture, literature, philosophy, art and literature. You do not need expertise in other language areas.

## French

The interdisciplinary scope of French studies in the Department of Languages, Literatures and Cultures makes Royal Holloway an ideal place to study for a postgraduate degree in French. Our research covers a wide range of literary, cultural and historical themes and we have expertise in film from its early silent days to modern postcolonial cinema.

## German

German research and teaching both include, and move beyond, the more traditional areas

of German studies. We particularly encourage interdisciplinary research proposals. We offer postgraduate supervision by scholars of national and international standing in a large range of fields.

## Hispanic Studies

Hispanic Studies at Royal Holloway is strongly committed to innovative approaches to postgraduate study and research across a range of fields including cultural studies, critical theory, feminism and gender theory, psychoanalysis, film studies, literature and the visual arts, in both Spain and Latin America.

## Italian

Royal Holloway is a thriving centre for Italian Studies in the UK, with an offering encompassing a broad variety of subjects, from Dante and Renaissance art to fashion, contemporary cinema and literature, and the digital humanities.

## Research opportunities

MPhil and PhD

Offering you the opportunity to pursue an original research project supported by world-class supervision, this degree entails writing an 80,000-100,000 word dissertation on a wide range of topics. You're encouraged to participate fully in the research culture of the department, to attend relevant department and school skills development events and to participate in the School of Humanities' postgraduate research training scheme, which gives all students the opportunity to gain teaching experience.



Cuba during the funeral of Fidel Castro by Dr James Kent

To find out about MPhil or PhD study, please contact our Director of Postgraduate Education (Research) or your proposed supervisor.

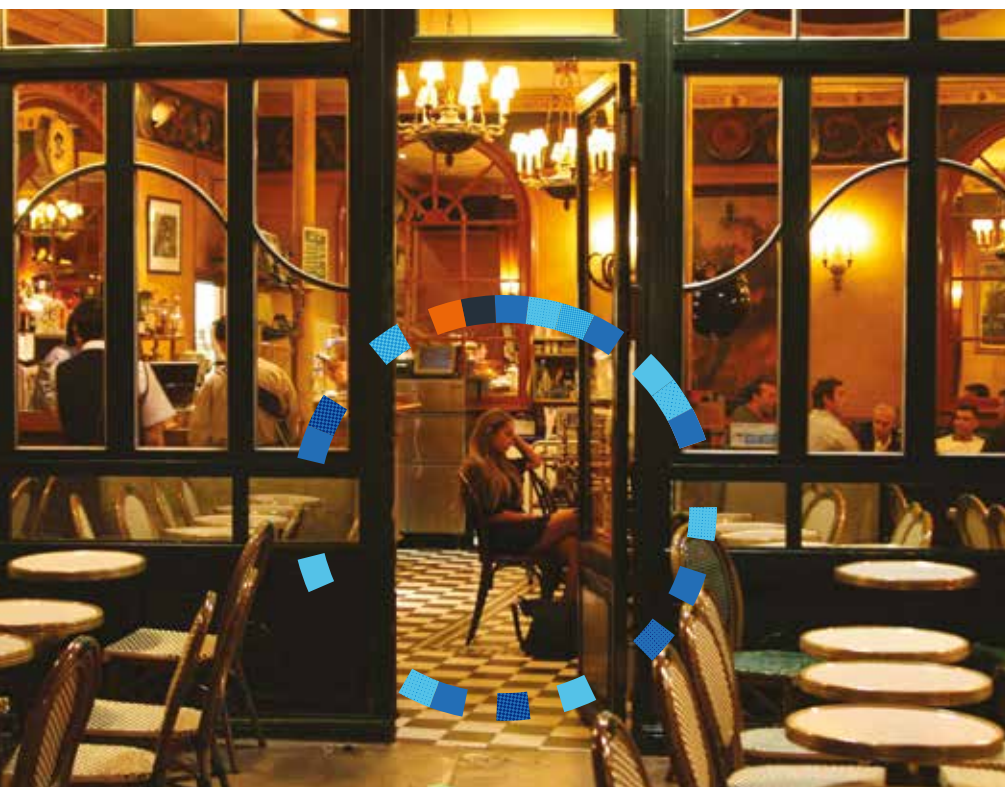
## Research interests

The Department of Languages, Literatures and Cultures is a vibrant community of world class researchers. Our research environment is founded in our expertise in French, German, Hispanic, Italian and comparative studies, and encourages collaboration and exchange across traditional disciplinary boundaries. Our strengths span literature, thought, film and the visual arts from the medieval period to the 21st century. Research themes cover gender, disability, politics and ethics, film, cultural memory and trauma, post-colonialism and globalisation, consumer culture, animal studies and ecocriticism, history of art and visual culture. We also specialise in the work of a wide range of individual authors, poets, philosophers, playwrights and filmmakers.

## Your future career

Students can take part in our postgraduate research training programme which focuses on developing transferable skills applicable to a wide range of careers, and is run by staff from across all four departments in the School of Humanities.

In recent years our postgraduates have gone on to successful academic careers in the fields of modern languages, critical theory and film. Alumni have also embarked upon other interesting careers in the UK, continental Europe and the United States – including working in government, journalism work for NGOs, trade sales, publishing, professional translating, teaching, museum curatorship, creative arts, and librarianship.



Parisian café by student Caroline Goethel



# Law and Criminology

The Department of Law and Criminology's internationally renowned academics are leaders in their fields and their cutting-edge research and practices inform our postgraduate degrees.

“Teaching staff created a safe environment, where I learned to express my opinions assertively. I secured an internship as a counter-terrorism researcher in Washington D.C. where I applied my skills at an international level.”

**Thulasi**

MSc Terrorism and Counter-Terrorism  
Studies



## Profile

Our students come from diverse backgrounds and benefit from stimulating teaching and supervision from a team of academics who are experts in their respective fields. The department's research interests and expertise encompass law, criminology, sociology and psychology.

- Our teaching is informed by research
- We support your career goals
- British Psychological Society accredited MSc Forensic Psychology

We work in close partnership with a number of statutory and voluntary agencies including prisons throughout England and Wales, Probation Trusts, the Police, the Youth Justice Board, NHS England and international pharmaceutical companies.

- Providing a foundation for continuing professional development.
- We are part of the School of Law and Social Sciences, focusing on social inquiry, democracy, justice, human rights and economic development.



Learn from leading experts from within Law, Criminology, Psychology and Sociology

## Courses

MSc Criminology\*  
 MSc Forensic Psychology  
 MSc Gender Studies and History and Socio-Legal Studies  
 MSc Terrorism and Counter-Terrorism Studies  
 MPhil/PhD

## Follow us



@RHUL\_Law



royalhollowaylawandcriminology



@Royalhollowaylaw

## Tuition fees 2025/26

UK students\*\*: £9,800-£14,400 per year  
 International students\*\*: £20,800-£26,100 per year

\*\* Fees may vary per course, please check website for full details.

For research degree tuition fees please see website.

## More course information and contacts

[royalholloway.ac.uk/courses](http://royalholloway.ac.uk/courses)

## More department information

[royalholloway.ac.uk/lawandcriminology](http://royalholloway.ac.uk/lawandcriminology)

## Entry requirements and how to apply

See page 106.

\* Degree under development



Senate House, London

## **MSc Criminology\***

**E** Egham campus, FT/PT, 12/24 months

This new degree is designed to equip you with an interdisciplinary understanding of topics related to crime, social order, and deviance from various backgrounds, including criminology, social and legal psychology, and sociology. You'll gain a critical understanding of how society, the criminal justice system, and individuals respond to crime in the UK and internationally. The degree has a criminology core and includes training in research methods. You'll take specialist modules, providing you with employability skills to pursue a career in the criminal justice system or other relevant areas. The MSc is offered by the Institute for the Study of Power, Crime, and Society, a hub of excellence for studying illegal, informal, and criminal dynamics of power in the broader social context.

### **Example modules**

- Theoretical foundations: Crime and society
- Perspectives on justice and punishment
- Advanced data analysis
- Organised crime, power and politics

## **MSc Forensic Psychology**

**E** Egham campus, FT/PT, 12/24-60 months

This is an interdisciplinary degree that draws together content and teaching from both psychology (see page 92) and law. It is designed to give you in-depth insights into topical issues and the latest research in forensic psychology, in line with the British Psychological Society curriculum requirements. Our balanced approach to research and teaching guarantees high quality teaching from both research and practice-led internal and external professionals.

### **Example modules**

- Forensic psychology and the legal and criminal justice context
- Forensic psychology practice with adults

- Forensic investigations
- Forensic psychology practice with young people and families
- Statistics for research
- Advanced and applied research techniques

## **MSc Gender Studies and History and Socio-Legal Studies**

**E** Egham campus, FT/PT, 12/24-60 months

**Taught in partnership with the Gender Institute.**

On this new degree you will explore how gender shapes social and legal as well as historical processes. Closely aligned with our Gender Institute and our Department of History (see page 56) you will learn from internationally renowned experts specialised in gender studies, history, law, criminology and sociology.

### **Example modules**

- Gender theory
- Gender, justice and emotion in Georgian Britain
- Gender and protest
- Gender, sexuality and crime

## **MSc Terrorism and Counter-Terrorism Studies**

**L** Central London, FT/PT, 12/24 months

This course is aimed at students who are looking for an interdisciplinary understanding of individual and organisational involvement in terrorism, coupled with an understanding of national and international approaches to counter-terrorism and countering violent extremism. Alongside the formal lectures and seminars, you will hear guest speakers from the research community, as well as the private and public sectors. The interdisciplinary nature of this course draws on the interlinkages between criminology, law, psychology, international relations, and sociology. It will prepare you for a career in terrorism and counter-terrorism studies research, or in the security or policy sector.

### Example modules

- Debates in terrorism studies
- Debates in counter-terrorism studies
- Contemporary forms of terrorism
- Psychology of terrorism
- Terror through time

### Research opportunities

We offer excellent facilities to supervise research students. We have a vibrant postgraduate research community that offers MPhil/PhD degrees.

Please see a list of relevant academics on our online staff list.

Our main research areas are organised in four multidisciplinary clusters:

- **Rights and Freedoms:** including the role law plays in the creation and protection of personal freedoms and corresponding rights; cultural, including intellectual property rights; access to justice and private law rights.
- **Health and Social Care:** including prescribed drugs, healthcare ethics, professional care worker ethics, research into young people's diet, food conditions and health, the experience and management of chronic illnesses such as asthma, diabetes and epilepsy, regenerative medicine and elite sport.
- **Crime and Punishment:** multidisciplinary staff work on areas across criminal justice, prisons, risk regulation, and notions of harm and violence.
- **Families and Children:** including studies on child welfare, child rights, families and food, and children's experiences of living with

chronic conditions and the impact on family relationships. Research also illuminates the relationship between families, the law and the criminal justice system.

We host two world-leading research centres:

- **Centre for the Study of Emotion and Law:** a multidisciplinary research hub looking into the connections and relationships between emotion and law.
- **Institute for the Study of Power, Crime, and Society:** the Institute is dedicated to studying illegal and criminal dynamics of power in the broader social context. Researchers at the Institute conduct cutting-edge research using quantitative methodologies and draw insights from many different fields to address phenomena of high social relevance.

### Your future career

Our flexible courses combine core teaching with specialised modules and the transferable skills that today's employers are looking for. Our graduates pursue a broad range of professional careers:

- Public policing and private security
- Probation and offender management
- Forensic services
- The court service
- Policy development and analysis
- Government services and departments
- Offender rehabilitation and reintegration
- Higher education and academic research
- Non-profit organisations supporting youth and adult offenders





# Mathematics

Our department offers the opportunity to be part of our thriving doctoral community, doing world-leading research under the supervision of experts, ranging from blue sky research in pure and applied mathematics and statistics to working closely with users of mathematics in commerce and industry.

## Profile

- In the UK Research Excellence Framework (REF 2021), 96% of our Mathematics research output is rated as world-leading or internationally excellent.
- The department has a dynamic community of staff whose passion and enthusiasm combines with a strong research culture to enrich our students' learning experiences.
- Our research covers a broad portfolio including Algebra, Combinatorics, Number Theory, Quantum Dynamics, Statistics and Probability.
- Our vibrant research community of PhD students organise their own seminar and reading groups alongside departmental seminars to develop breadth of expertise.
- The department has strong expertise in information security, and plays an active part in the Information Security Group (see page 60).
- Our links with industry mean we understand the needs of employers and can equip our graduates with the knowledge and skills to contribute to mathematics at the highest levels, in research, science or industry.
- We're part of the School of Engineering, Physical and Mathematical Sciences, delivering world-class fundamental research and impact.

## Research opportunities

A strong research culture informs our teaching at all levels. Across the department, academic staff are active in pioneering research covering a wide variety of topics, and making an impressive impact on the world stage.

We invite you to email staff directly if you are interested in discussing potential MPhil or PhD projects. A full list of staff and their research interests is available on our website.



“I studied MSci Mathematics at Royal Holloway which inspired me to do a PhD to take it even further. The staff are friendly and approachable and the skills I’ve acquired have prepared me for my future career.”

**Samuel**

PhD in Mathematics





Applicants should have, or expect to be awarded, the equivalent of an Upper Second Class Honours degree related to the field in which they wish to undertake research.

### Research interests

Algebra, in particular group theory; Discrete Mathematics and its Applications (including combinatorial theory, graph theory, cryptography); Information Security; Number Theory (including Analytic and Algebraic Number Theory, circle method, Pisot and Salem numbers, theory of heights); Quantum Dynamics (including atomic and molecular systems with few degrees of freedom, quantum information theory, quantum computing); Statistics and Probability (including time series and forecasting, and statistical estimation theory, financial mathematics and data science).

### Research facilities

Postgraduate students are well provided for in terms of computing facilities with a large dedicated machine available for intensive computations together with personal computers for more routine work. The library has an extensive collection of mathematical books and journals and provides electronic access to major mathematics journals.

## Your future career

We prepare graduates for successful careers in a variety of industries, such as information security, IT consultancy, banking and finance, higher education and telecommunications. Our graduates have entered into many interesting jobs, from Senior Manager at Enterprise Risk Services, Deloitte; Global IT Security Director at Reuters; to Information Security Manager at London Underground.

Our graduates are working for organisations such as:

KPMG, Ernst & Young, the Ministry of Defence, Barclays Bank, Lloyds Banking Group, the Department of Health, Logica, McLaren and TowersWatson.

# 96%

research output is rated world-leading or internationally excellent

(Research Excellence Framework, 2021)


### Courses

MPhil/PhD Mathematics

MPhil/PhD Information Security (see p60)

### Follow us

 @RHULMaths

 MathsRHUL

### Tuition fees 2025/26

For research degree tuition fees please see website.

### More course information and contacts

[royalholloway.ac.uk/courses](http://royalholloway.ac.uk/courses)

### More department information

[royalholloway.ac.uk/mathematics](http://royalholloway.ac.uk/mathematics)

### Entry requirements and how to apply

See page 106.

# Media Arts

One of the UK's leading departments in research and practice, our courses are led by world-class experts and practicing professionals dedicated to achieving the highest standards in both the study and practice of screen media. All Masters are taught by award-winning practitioners.



“The coordinators of the Media Arts programme at Royal Holloway were the most encouraging and experienced. It was a clear choice to go where I would be valued and supported as a student.”

**Maggie**

MA Producing Film and Television

## Profile

- Our full-time and part-time academic staff, along with a truly international community of postgraduate students, all contribute to the department's vibrant culture.
- Our size and multi-faceted research and professional expertise foster successful synergies between film and television history, theory and creative practice.
- We have expertise in digital media, creative industries, the use of media in the fine arts and work on both fictional and factual representations, whilst our distinctive research culture brings together the practical and professional with the more conventionally academic and conceptual.
- Our network of successful, international alumni, links to industry and the benefit of teaching at both our Egham campus and in London add to a professional environment for outstanding research and practice.
- We're part of the interdisciplinary School of Performing and Digital Arts, which encourages diverse and collaborative creativity.



# 9th

in the UK for world-leading research  
(THE, REF 2022 rankings by subject)

# 7th

in the UK for research quality  
(Complete University Guide, 2025)

## Courses

MA Immersive Storytelling  
MA International Media Management  
MA Producing Film and Television  
MA by Research in Film, Television and Digital Production  
MA Writing for Screen, Stage and Radio\*  
MPhil/PhD

\* See Drama, Theatre and Dance page 28 for full details.

## Follow us



@RHULMediaArts



RHULMediaArts

## Tuition fees 2025/26

UK students\*\*: £11,600-£14,400 per year  
International students: £23,700 per year

\*\* Fees may vary per course, please check website for full details.

For research degree tuition fees please see website.

## More course information and contacts

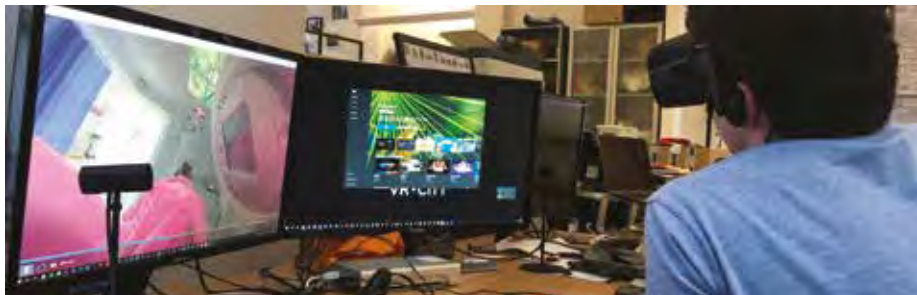
[royalholloway.ac.uk/courses](http://royalholloway.ac.uk/courses)

## More department information

[royalholloway.ac.uk/mediaarts](http://royalholloway.ac.uk/mediaarts)

## Entry requirements and how to apply

See page 106.



Exploring virtual reality storytelling

## MA Immersive Storytelling

**E** Egham campus, FT, 12 months

Augmented and virtual reality have exploded globally in recent years as artists, businesses and the media have all adopted immersive production techniques to tell their stories. This is an industry-focused, hands-on course that will give you the knowledge and tools to create your own immersive work, learning from some of the leading immersive storytellers in the UK. Part of the National Centre for Immersive Storytelling, Royal Holloway is the perfect place for the storytellers of tomorrow to study this innovative MA.

### Example modules

- Digital creative industries: Interactive, immersive, innovative
- Immersive storytelling form and practice
- Immersive technologies

## MA International Media Management

**E** Egham campus, FT, 12 months

This internationally oriented course develops creative entrepreneurs prepared to navigate new technologies, changing consumer behaviour, and evolving business models in the global media industry. It teaches the project management, business and research skills essential for overseeing the life cycle of complex media projects from conception to completion. There will be a number of high-calibre tutors leading this course, many of whom are actively working for media content and creative technology industries. You will also benefit from visits by industry speakers and guest lecturers throughout the year.

### Example modules

- New media institutions
- Managing and financing TV and Film projects
- International audio-visual business
- Digital creative entrepreneurship
- Media industries report

## MA Producing Film and Television

**L** Central London, FT, 12 months

This MA concentrates on quality fiction and teaches aspiring producers the essential creative, management, business and technical skills they need for the global film and TV industries. Taught by award-winning industry professionals with close links to the UK industry, you will develop a personal portfolio of films, and projects. This MA will suit you if you are creative, highly motivated and seeking a challenging 100% practical degree.

### Example modules

- Script development
- International media finance
- Production of a short film and web series
- Production management
- Marketing and media law

## MA by Research in Film, Television and Digital Production

**E** Egham campus, FT/PT, 12/24 months

If you're an independent researcher who wants to move onto a PhD or just interested in what further study might look like, then take a first step towards doctoral study: explore your area of interest in depth, test out a research topic, and learn the skills of longer scholarly writing and film production. You'll be supervised one-to-one, and then assessed entirely on your research dissertation. Along with your one-to-one supervisions, you'll take part in an interdisciplinary module in critical theory and methodologies. There, you'll learn about the key thinkers in the field, and the critical approaches you'll need for your dissertation.

### Research opportunities

Academic staff are happy to discuss MPhil and PhD research projects in advance of a formal application. Please contact our Director of Postgraduate Research or write directly to your proposed supervisor.

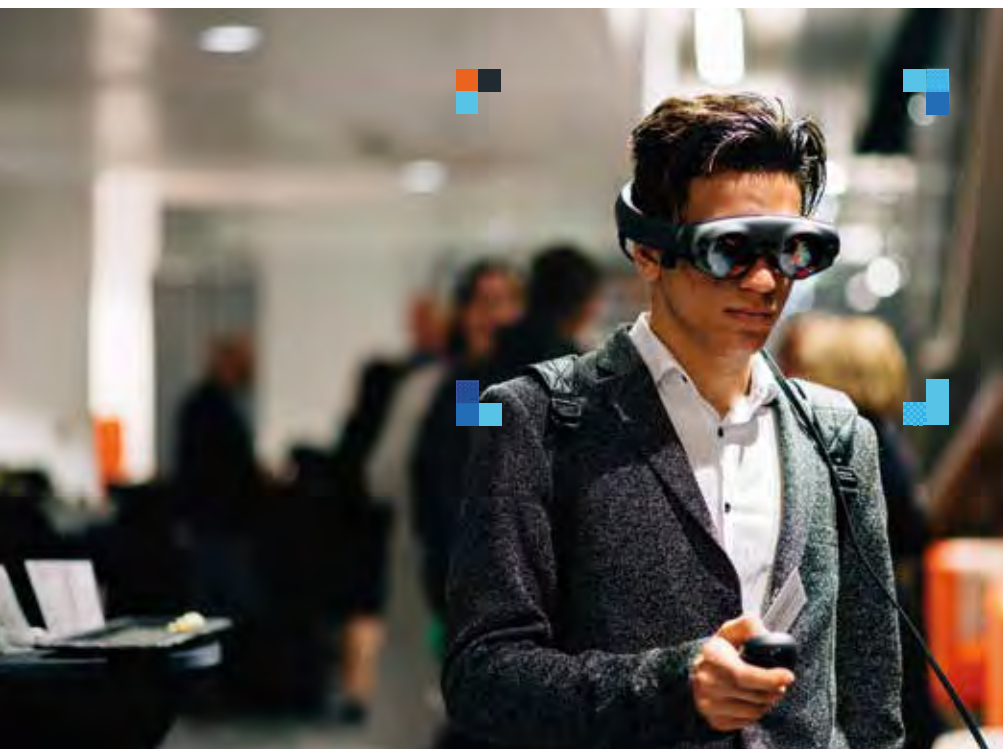
We have expertise in creative industries, cross platform digital arts, immersive storytelling and interactivity, screenwriting, the use of media in the fine arts and work on both fictional and factual representations, and production. We are interested in supervising projects on many topics covering the theory and practice around film, television and digital media.

### Facilities

Make use of our exclusive 24/7 media labs and postproduction rooms, our extensive links to local industry, complemented by an impressive range of professional location filming equipment, TV and sound studio facilities, supported by our dedicated, professional and approachable technical team.

### Your future career

With a strong emphasis on professional training, we prepare graduates for careers across the creative industries and the academy. Our postgraduate students have gone on to become award winning directors, writers, editors, animators, producers and commissioners. Some of them have gone on to work at the BBC, ITV Studios, Channel 4, Netflix, Amazon, Apple TV, Banijay, Meta and iQIYI. Recent graduates have been nominated for and won many awards, including The London International Film Festival, BBC Storyville, International Women's Film Festival and The Los Angeles Film Awards and an EMMY. Our graduates have an excellent professional reputation that has led to an international network for professional opportunities and support. For other graduates, completing an MA is the precursor to embarking on research, and may ultimately lead to a PhD.

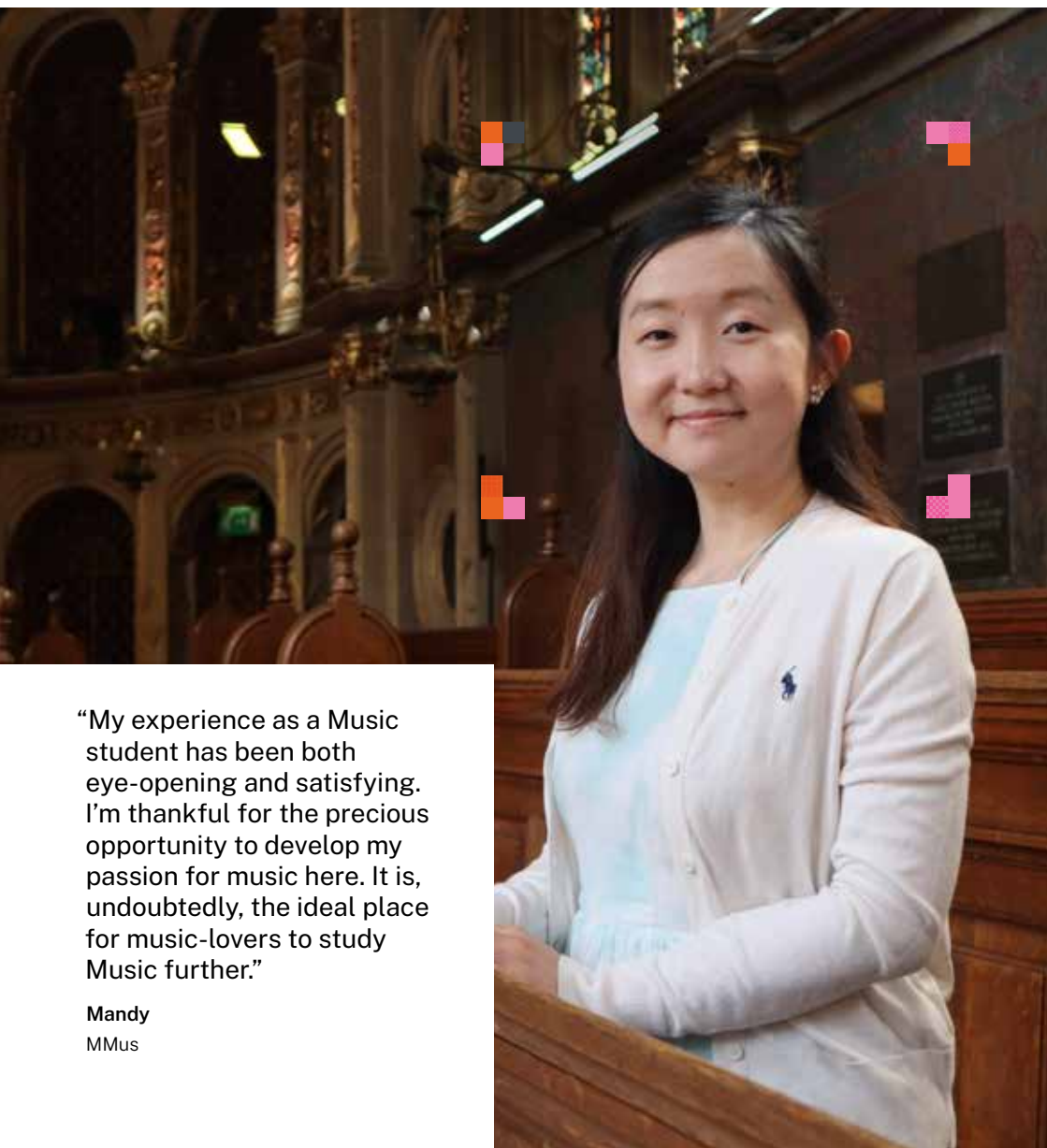


Exploring virtual reality storytelling



# Music

Join our Department of Music at Royal Holloway and you'll be joining a community that has a national and international reputation, attracting first-class students from all over the world.



“My experience as a Music student has been both eye-opening and satisfying. I’m thankful for the precious opportunity to develop my passion for music here. It is, undoubtedly, the ideal place for music-lovers to study Music further.”

**Mandy**

MMus

## Profile

- We're home to a friendly postgraduate community (around 50 research students and 20 Masters students each year), our work covers broad chronologies and geographies. From Baroque to contemporary music, spanning Asia, Europe and the Americas, we cross disciplinary boundaries and integrate perspectives from musicology, ethnomusicology, theory, film/tv/game music, composition, sound studies and performance.
- You'll work closely with internationally recognised experts in seminars and tutorials, and in research guided by a supervisory team.
- Special lecture series, postgraduate study days at which you'll give papers and chair discussions, composer workshops, and masterclasses all enhance your study experience.
- We're part of the interdisciplinary School of Performing and Digital Arts, which encourages diverse and collaborative creativity.



The Royal Holloway Orchestra and the London Mozart Players in the Windsor Building Auditorium

# 2nd

in the UK for overall research

(THE, REF 2022 by Grade Point Average)

# 14th

in the world for performing arts

(QS World University Rankings by Subject, 2024)



The UK's only Regius Chair in Music

## Courses

MMus Music

MMus Music:

Continued Professional Development

Postgraduate Diploma Music Performance

MPhil/PhD

## Follow us



@RoyalHollowayMu



Royal Holloway Music Department

## Tuition fees 2025/26

UK students: £11,600 per year

International students: £22,300 per year

For research degree tuition fees please see website.

## More course information and contacts

[royalholloway.ac.uk/courses](http://royalholloway.ac.uk/courses)

## More department information

[royalholloway.ac.uk/music](http://royalholloway.ac.uk/music)

## Entry requirements and how to apply

See page 106.



### **MMus Music**

**E** Egham campus/central London, FT/PT, 12/24 months

This course offers focused pathways in Composition, Musicology/Ethnomusicology, Performance (including Collaborative Piano), Film/tv/game music and Music Management. Individual electives include areas such as music and screen media, video game music, performance studies, historical musicology, digital entrepreneurship, and acoustic and electronic composition. This creates a balance of broad-based and specialist training, designed to work as a self-standing qualification or as a preparation for research (including ethnography and practice-based research).

#### **Example modules**

- Skills in advanced musical studies
- Special study: composition, dissertation or performance
- Topics in music and screen media
- Ludomusicology and video game music
- Techniques in ethnomusicology
- Digital creative entrepreneurship
- Music Industries Report

### **MMus Music:**

#### **Continued Professional Development [CPD]**

**E** Egham campus/central London, CPD, 60 months

Our CPD mode of study enables you to complete the MMus even if you are working full time. By taking one elective per year, you will complete the full course over 60 months.

### **PG Diploma Music Performance**

**E** Egham campus/central London, FT/PT, 12/24 months

This course, which is taught alongside the MMus, is designed to enable students to specialise in performance and performance studies, without the need to maintain a broad and essay-based focus that is more usual in the MMus.

#### **Example modules**

- Special study: performance
- Techniques of performance studies
- Short recital
- The collaborative pianist and vocal coach

### Research opportunities

We offer an MA by Research option.

Applications are also invited for places on our MPhil and PhD research programmes. Academic staff are happy to discuss research projects in advance of a formal application. Please contact our Director of Postgraduate Research.

### Research interests

Staff specialisms range widely from the 17th century to the present, and encompass popular and commercial music, film music, video games, sound studies, global music studies, and music of the Western tradition.

- Composition and contemporary performance
- Digital creativity, screen media and music
- Global perspectives on music
- Inclusion, participation and decolonisation in music
- Modernity and music
- Music history, archiving and heritage



Our research methodologies are diverse, and include social, political and institutional historiography, practice-based (performance and composition) and ethnographic approaches, and engage many contemporary concerns (including music and social justice, and music and the environment).

### Research facilities

The department has a new IT suite with round-the-clock access for postgraduate students, a global music studio, a large number of practice rooms and a small recital room. Performances are regularly scheduled in the University's Grade I-Listed Victorian Picture Gallery. Our modern on-campus library holds our extensive music collection, whilst composers also benefit from our industry-standard studios for film/television composition, and performance studies students from a Disklavier.

We have collaborative research activities with other major institutions in the UK and continental Europe. In addition, our staff edit major musicological journals (e.g. *Music & Letters*, *Plainsong and Medieval Music*, *Twentieth-Century Music*, *Ethnomusicology Forum*) and book series. We also lead bibliographical projects that underpin the work of musicologists worldwide (RISM UK, Early Music Online, A Big Data History of Music).

### Your future career

Our graduates have interesting and successful careers. Many of our research students graduate to full-time academic posts, while others are active in performance, composition, publishing, arts administration, the media, and teaching.

Many of our former students go on to begin jobs in the sector with a raised sense of community engagement and social enterprise. Additional interesting careers and fields our graduates have found a calling in include ensemble directorship, media and copyright law, and arts advocacy.



# Philosophy

Philosophy at Royal Holloway offers you an exciting and unique opportunity to study one of the oldest and most fundamental forms of human enquiry.



“My course bridged the gap between philosophy and politics to offer a range of stimulating topics. I was surrounded by dedicated staff and students, which made for a truly memorable experience at a stunning university.”

**Stephen**

MA Political Philosophy



## Profile

- Part of the Department of Politics, International Relations and Philosophy, we offer an exciting, diverse and unique way to study this subject. Our distinctive programme works across traditional divisions between analytic and continental philosophy, contemporary philosophy and the history of philosophy, and connects philosophy to related disciplines across the arts, humanities and social sciences.
- The research interests of our staff include Hellenistic philosophy, 19th and 20th-century German and French philosophy, analytic philosophy, philosophy of psychiatry, pragmatism, applied political theory and ethics, poststructuralist political thought, and democratic theory.
- We teach MA degree courses reflecting our research specialisms, and offer supervision for an MA by Research and an MPhil/PhD.
- We are part of the interdisciplinary School of Law and Social Sciences that brings together research focusing on social inquiry, democracy, justice, human rights and economic development.



Work beyond the narrow confines of Anglo-American or European philosophy

## Courses

MA European Philosophy  
MA Political Philosophy  
MA Philosophy by Research  
MSc Gender Studies and Philosophy  
MPhil/PhD

## Follow us

 @PhilosophyRHUL

## Tuition fees 2025/26

UK students: £11,600 per year  
International students: £20,800 per year

For research degree tuition fees please see website.

## More course information and contacts

[royalholloway.ac.uk/courses](https://royalholloway.ac.uk/courses)

## More department information

[royalholloway.ac.uk/philosophy](https://royalholloway.ac.uk/philosophy)

## Entry requirements and how to apply

See page 106.



**“My research focuses on the development of German idealist philosophy and its influence on 20th-century French philosophical movements, including existentialism.”**

### **Dr Henry Somers-Hall**

Director of the Centre for Continental Philosophy

### **MA European Philosophy**

**E** Egham campus, FT/PT, 12/24 months

One of the few MA degrees in the country to specialise in the European philosophical tradition, this programme examines the development of European philosophy from Kant's critical philosophy through to the Frankfurt School and 20th-century French philosophical movements. Studying this course you will take two Advanced topics in philosophy modules, core modules from among the European philosophical trajectory: From Kant to the present, 20th-century French philosophy, and contemporary continental political theory, and will complete a 10-12,000 word dissertation. Optional modules cover a range of topics reflecting research interests of members of the department.

#### **Example modules**

- Identity, power and radical political theory
- 20th-century French thought
- Contemporary continental political theory

### **MA Political Philosophy**

**E** Egham campus, FT/PT, 12/24 months

This degree course offers advanced training in key issues and thinkers in contemporary political thought, from Anglo-American and continental perspectives, including applied analytical political and democratic theory, post-Nietzschean theories of identity and post-identity politics, and pragmatist philosophy. Studying this course you will take Advanced topics in philosophy I and II, core modules from among political concepts, contemporary Anglo-American political theory and contemporary continental political theory, and will complete a 10-12,000 word dissertation. Optional modules cover a range of topics reflecting research interests of members of the department.

#### **Example modules**

- Contemporary political thinkers
- Identity, power and radical political theory
- Cultivation of the self
- Political concepts

### **MSc Gender Studies and Philosophy**

**E** Egham campus, FT/PT, 12/24 months

Studying on our new MSc Gender Studies and Philosophy, you will explore the relevance of gender and sexuality across a range of philosophical debates. Closely aligned with our Gender Institute, you will learn from internationally renowned experts specialising in gender research and philosophy. You will be able to tailor your degree to your interests, with optional modules covering a range of topics such as embodiment, protest, 20th-century French philosophy, gender, race and queer philosophy, to name a few.

#### **Example modules**

- Gender theory
- Gender, power and protest
- Gender and technologies
- Race, gender and queer philosophy

### **Bradley de Glehn Scholarship**

The scholarship was established by Mrs Ernest de Glehn in memory of her brother, AC Bradley.

Available for full or part-time postgraduate students studying for a taught Masters course in Philosophy.

The scholarship is offered as a tuition fee reduction and more information can be found at [royalholloway.ac.uk/scholarships](http://royalholloway.ac.uk/scholarships)

## MA Philosophy by Research

**E** Egham campus, FT/PT, 12/24 months

The MA by Research allows you to conduct independent research culminating with a 40,000 word dissertation. Research is supported by one-to-one supervision with a member of the Philosophy team.

There are no mandatory modules, but you can choose modules from the taught MA degrees.

### Research opportunities

We offer advanced research training through our MPhil/PhD programme. Philosophy is part of the AHRC-recognised TECHNE doctoral training consortium and our students are able to apply for fully-funded studentships and bursaries, as well as studentships offered by Royal Holloway.

We ask applicants to discuss their research projects with us in advance of a formal application by contacting your proposed supervisor. See contact details on our website.

### Research interests

The department has a wide-ranging research profile. In ancient philosophy its focus is Hellenistic thought, and particularly Stoicism and its reception in later periods. Other historical interests include the origins and development of German idealism, and particularly its impact on 19th and 20th-century French philosophy.

In contemporary philosophy, our research incorporates both Anglo-American and European political theory, and includes focus on democratic theory, theories of power and identity, the politics of race and ethnicity, and issues in applied political thought, in particular liberal freedoms and social justice. We also have an established strength in pragmatist philosophy, both its late 19th-century origins and contemporary debates concerned with religious belief, scientific knowledge and democratic pluralism. Finally, the department has strengths in 20th-century phenomenology

and poststructuralist thought, and particularly the work of French poststructuralist thinkers Gilles Deleuze and Félix Guattari.

Other research interests of the group include philosophies of time, the metaphysics of free will and personal identity, philosophy of mind and psychiatry, philosophy of love, applied ethics, philosophy and literature and continental philosophy of religion.

### Research facilities

Philosophy is part of the School of Law and Social Sciences located at the centre of our historic campus in Egham, Surrey. In addition to the substantial library collections on campus, postgraduates also have access to other libraries of the University of London, including Senate House. Philosophy students also benefit from our collaboration with and support from the Royal Institute of Philosophy and the Institute of Philosophy in the School of Advanced Study in central London, which offer a very wide range of seminars and lectures throughout the academic year.

### Your future career

Philosophy degrees are well regarded by employers as they give you the capacity to think through issues and problems in a logical and consistent way and to develop critical and transferable skills, which can be applied in almost any area of employment.

Our graduates have gone on to careers such as teaching/lecturing, research, communications, consultancy and policy.

Recent destinations include McKinsey and Company, Amazon, Citizens Advice and the Department for Transport as well as academic positions at universities in the UK and abroad.



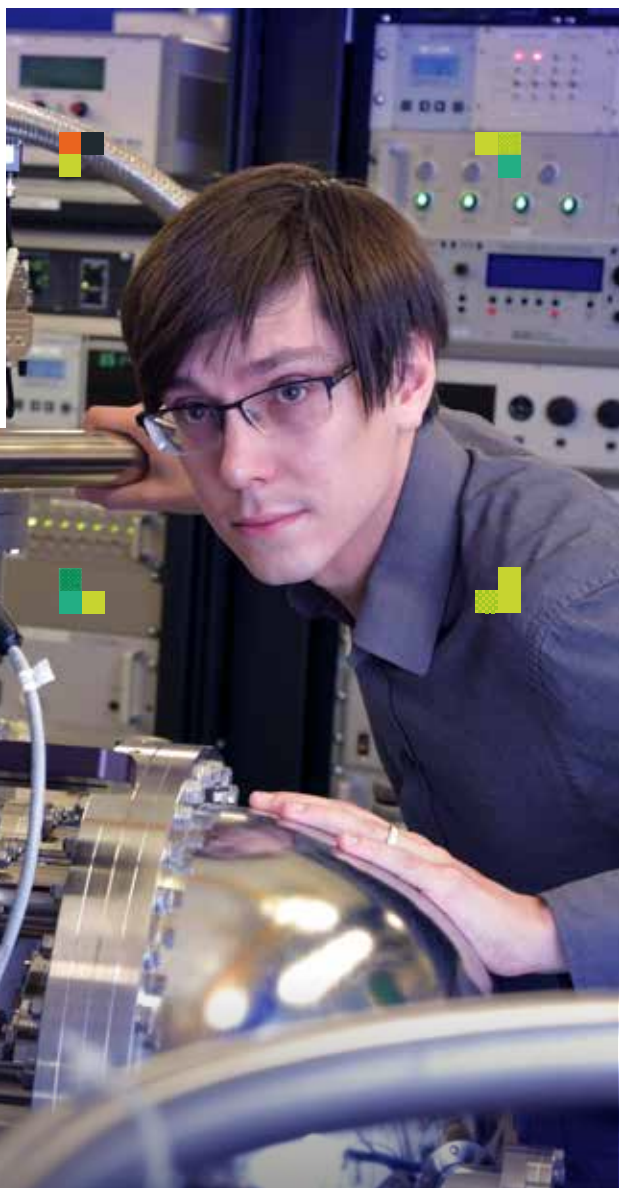
# Physics

Our department is a vibrant and dynamic centre for physics with research activity traceable back to the establishment of the institution in the late 1800s. Today we deliver our own individual research leadership and lead national and international research partnerships at the forefront of the most exciting fields in physics.

“My work combines aspects of theoretical physics at Royal Holloway with the experimental facilities of the Diamond Light Source. This collaboration has allowed us to probe exotic phases of matter in new and exciting ways.”

**Luke**

PhD in Condensed Matter Physics



Courtesy of Diamond Light Source

## Profile

- Our research portfolio is broad based and world-leading, ranging from theoretical and experimental work in fundamental curiosity driven research to developing practical solutions for some of today's most important scientific and social problems.
- Much of our research is carried out in collaboration with other leading universities and laboratories in Europe and worldwide, including CERN European Organisation for Nuclear Research, the European Spallation Source, the National Physical Laboratory and high tech industry partners.
- Strong funding support is provided by the leading national and international science funding agencies, including the Engineering and Physical Sciences Research Council (EPSRC), the Science and Technology Facilities Council (STFC), Innovate UK, the European Commission and the Royal Society.
- We're part of the School of Engineering, Physical and Mathematical Sciences, delivering world class fundamental research and impact.



Research at the Large Hadron Collider (LHC) CERN

# 84%

research is rated world-leading or internationally excellent

(Research Excellence Framework, 2021)

# 14th

in the UK for 4\* world-leading research environment

(THE, REF Institutions ranked by subject, 2022)

## Courses


MSc Physics by Research

MPhil/PhD Physics

## Follow us

 @RHULPhysics

 @RHULObservatory

 RoyalHollowayPhysics

## Tuition fees 2025/26

UK students\*: £4,786 per year

International students: £25,500 per year

\* UK tuition fees for research courses are set annually in spring by UKRI and may increase. Please check website for updates.

## More course information and contacts

[royalholloway.ac.uk/courses](https://royalholloway.ac.uk/courses)

## More department information

[royalholloway.ac.uk/physics](https://royalholloway.ac.uk/physics)

## Entry requirements and how to apply

See page 106.



## MSc Physics by Research

### **E** Egham campus, FT/PT, 12/24 months

Available in any research area, our Masters by Research provides in-depth research experience and training leading to a qualification that can be used to gain advancement in a chosen career or to underpin subsequent Doctoral level studies. Suitable for applicants with a Physics background, usually holding a BSc qualification or looking to build on relevant career experience.

## MPhil/PhD Physics

### **E** Egham campus, FT/PT, 36 - 48 months

Available in any research area, Doctoral level study provides the career defining qualification in research and development for academia or industry. A PhD in Physics develops lifelong transferable skills that underpin any career, whether scientific, technological, managerial

or unique. A prior MSci qualification at 2:1 or 1st class in Physics, or MSc at Distinction level in Physics, is required for entry.

## Research interests

### Activities in Particle Physics have three broad areas of focus:

- At CERN, the ATLAS experiment collects data produced by the Large Hadron Collider (LHC). Our physicists played an important role in the 2012 discovery at the LHC of the Higgs boson and are studying the properties of the new particle. Our scientists are also carrying out studies of the top quark and searching for new physics that goes beyond the current Standard Model, such as quark-lepton compositeness and extra dimensions. The group also plays an important role in computing for the LHC through involvement in the Particle Physics Grid.

## SuperFab

SuperFab is a world-class electronic nanofabrication centre and an open-user UK national facility with an emphasis on the development of superconducting quantum technology and exploring fundamental condensed matter physics. SuperFab enables national and international academic and industrial scientists, technologists and engineers to research and develop applications in next generation quantum

technology, including quantum enabled sensing, quantum computing, spintronics and the electrical and thermal properties of quantum wires.

Research students may work with academics or industrialists on research projects that could uncover fundamentally new phenomena, realise a superconducting quantum computer or lead to the commercialisation of Quantum Technology.

Visit [royalholloway.ac.uk/superfab](http://royalholloway.ac.uk/superfab)



SuperFab, our world-class superconducting nanofabrication centre

- Research centered on the physics of cutting-edge particle accelerators, both for particle physics experiments including the LHC, and for light sources and neutron spectroscopy experiments and applications in medicine. This work is being pursued in the John Adams Institute for Accelerator Science, a joint initiative between Royal Holloway, Oxford University, and Imperial College.
- The search for dark matter and neutrino physics with liquid noble detectors, including Helium (QUEST-DMC), Argon (DUNE, DarkSide, DEAP) and Xenon (LZ) experiments, located at laboratories in the UK, Canada, Italy and USA. A major goal of this activity is developing beyond-state-of-the-art instrumentation for the next generation of dark matter and neutrino physics projects in our laboratories on campus.

#### **Our interests in Condensed Matter Physics include:**

- The Nanotechnology group, studying quantum technologies including quantum computation, spintronics, TeraHertz, quantum limited sensors, the electrical and thermal properties of quantum wires and the properties of the superconducting Josephson junctions.
- The London Low Temperature Laboratory, exploring the emergent properties of Helium at milliKelvin temperatures, including two-dimensional quantum fluids and solids, solid  $^3\text{He}$  and helium clusters, and the use of superconducting quantum interference devices to enable nuclear magnetic resonance and current sensing noise thermometry.
- The Advanced Materials group addresses fundamental and applied problems in condensed matter physics, including magnetic monopoles, quantum criticality and superconductivity, as well as new materials for energy applications such as thermoelectric and battery materials. Experimental projects often use neutron and synchrotron X-ray scattering at the nearby ISIS and Diamond Light Source facilities.

#### **Our work in Theoretical Physics includes:**

- Research in theoretical particle physics in the areas of collider phenomenology and astroparticle theory. This includes calculations for the LHC and phenomenological studies of Higgs and electroweak gauge bosons in and beyond the Standard Model. The astro-particle activity includes theoretical developments in

dark matter physics, early Universe cosmology and neutrino physics.

- The Hubbard Theory Consortium (HTC) offers projects in the theory of correlated electron systems, high-temperature superconductivity, cold atoms and quantum many-body non-equilibrium physics. Methods include dynamical mean field theory, many-body Green function techniques, and correlated wave function techniques. The HTC runs 'Condensed Matter Physics in the City', a summer workshop that attracts international leaders in strong correlation physics for advanced study, pedagogy and exchange of ideas.

#### **Research opportunities**

You are able to apply for a postgraduate research place leading to a PhD degree in any of the department's research areas. Please email academic staff you are interested in working with. Staff lists are available on our website. Funding opportunities for UK and EU postgraduate students include research council awards, industrial support and Royal Holloway studentships. Formal applications should be submitted via the Admissions portal.

#### **Research facilities**

Our major facilities include SuperFab, a UK electronic nanofabrication facility focused on superconducting quantum electronics; the Materials Discovery Laboratory for crystal growth and characterisation; the High Performance Computing Cluster; the Accelerator Physics Laboratory, the Dark Matter Laboratory, the High Power Laser Facility and the University of London Low Temperature Laboratory.

#### **Your future career**

Our SEPnet Employer Engagement Advisor will support you through your studies alongside an employer engagement programme which includes career mentoring as well as short placements for PhD students, and GRADnet skills training. Many of our PhD graduates continue in Physics associated research, either in academic or commercial laboratories. Others enter financial institutions, jobs involving computers and communications, or scientific publishing and patent law.

# Politics and International Relations

We are a research-active department with academic staff, visiting scholars and research students who all play an active role in the department's dynamic research culture.



"I enjoyed the seminar setting, it allowed me to interact with lecturers and classmates. Modules include assignments and activity focusing on professional skills, such as developing campaign strategy, using statistical software and presenting research."

**Sarah**

MSc Elections, Campaigns and Democracy

## Profile

- We are rated second in the country for research overall and first for world-leading research outputs (THE, REF institutions ranked by subject, 2022).
- Our department's postgraduate teaching is research-led, with academics teaching modules in the fields they publish in, making for an intensive and in-depth learning experience. This is supported by an intensive research skills training programme and active research centres with regular seminars and events open to students to attend and take an active role in.
- We are part of two doctoral training centres: the Economic and Social Research Council South East Doctoral Training Arc (SEDarc) with ESRC 1+3 and CASE studentships; and the Arts and Humanities Research Council Techne doctoral training partnership, which funds PhD research in a range of arts and humanities disciplines.
- Each Masters course consists of core modules, a wide variety of specialist options, and a 10-12,000 word supervised dissertation. Three of our degrees are also offered at a Postgraduate Diploma level (without the dissertation element). Our degrees can be taken full time over 12 months or part-time over 24 months (9 and 20 months respectively for the Diploma degrees).
- We are part of the interdisciplinary School of Law and Social Sciences, focusing on social inquiry, democracy, justice, human rights and economic development.



The Department of Politics, International Relations and Philosophy is home to eight research centres, including the Democracy and Elections Centre.

# 64%

research output rated 4\* world leading (highest score in sector)

(Research Excellence Framework, 2021)

# 2nd

in the UK for research overall

(THE, REF Institutions ranked by subject, 2022)

## Courses

MSc Elections, Campaigns and Democracy  
MSc Gender Studies and International Relations  
MSc Gender Studies and Politics  
MSc International Public Policy and Development  
MSc International Relations  
MSc International Security  
MSc Media, Power and Public Affairs  
MPhil/PhD

## Follow us



@RHULpirp

## Tuition fees 2025/26

UK students\*: £11,600-£14,400 per year  
International students\*: £20,800-£26,100 per year

\* Fees may vary per course, please check website for full details.

For research degree tuition fees please see website.

## More course information and contacts

[royalholloway.ac.uk/courses](http://royalholloway.ac.uk/courses)

## More department information

[royalholloway.ac.uk/politicsandir](http://royalholloway.ac.uk/politicsandir)

## Entry requirements and how to apply

See page 106.

### **MSc Elections, Campaigns and Democracy**

**E** Egham campus, FT/PT, 12/24 months

Studying this degree you'll gain theoretical and practical training on the challenges of running a modern election campaign.

#### **Example modules**

- Public opinion
- Elections and campaigning
- Strategic political communication
- Political psychology

### **MSc Gender Studies and International Relations**

**E** Egham campus, FT/PT, 12/24 months

Studying this interdisciplinary degree closely aligned with our Gender Institute you'll be able to tailor your degree to your interests. You will be able to choose from a range of optional modules covering a range of topics.

#### **Example modules**

- Gender and technologies
- Analysing international politics
- Gender and nationalism in the Middle East and South Asia
- International security

### **MSc Gender Studies and Politics**

**E** Egham campus, FT/PT, 12/24 months

The MSc Gender Studies and Politics will put questions of power, inequality, and identity at the heart of your studies. The degree is closely aligned with the Gender Institute and your tutor will be from the gender studies teaching team. Optional modules will cover a range of topics such as e.g. political psychology, public opinion and strategic political communication.

#### **Example modules**

- Gender, power and protest
- Identity, power and radical political theory
- Gender and global politics
- Political concepts

### **MSc International Public Policy and Development**

**E** Egham campus, FT/PT, 12/24 months

Brings together the academic studies of international relations and development studies with a practice-based analysis of public policy formulation and governance beyond the nation-state.

#### **Example modules**

- Political economy of development
- International public policy
- Global health policy
- The global politics of food security
- International public practice

### **MSc International Relations**

**E** Egham campus, FT/PT, 12/24 months

Key issues in international relations and transnational politics, theory and concepts of International Relations.

#### **Example modules**

- Analysing international politics
- United States foreign policy
- International relations of the Middle East
- The Israel-Palestinian conflict

### **MSc International Security**

**E** Egham campus, FT/PT, 12/24 months

An in-depth exploration of the field of Security Studies, developing understanding of national and transnational security dynamics.

#### **Example modules**

- International security
- Media, war and conflict
- Understanding defence

### **MSc Media, Power and Public Affairs**

**E** Egham campus, FT/PT, 12/24 months

Comprehensive analysis of the changing media environment and its impact on political institutions, citizens' attitudes and behaviours and public policy.

#### **Example modules**

- Media, power and public affairs
- Strategic political communication
- Media, war and conflict
- Parties, media and the defence of democracy

### **Research opportunities**

Applications are invited for places on our MPhil and PhD research degrees. Our research students are mentored by established academics to develop their doctoral dissertations and publishing profiles and are supported to present their research at seminars and conferences outside Royal Holloway. Please contact your proposed supervisor directly to discuss potential supervision before applying. A list of academic staff can be found on our website.

### **Research interests**

We are one of the UK's top departments for research in the field, with a large group of world-class researchers using a wide spectrum of theoretical and methodological approaches to address a broad range of issues and geographical areas. This empirical, methodological and theoretical plurality is reflected in the variety of research centres in PIR, which include:



- Jean Monnet Chair
- The Democracy and Elections Centre
- The Centre for International Security
- The Centre for Islamic and West Asian Studies
- The Global Politics and Development Centre
- The Contemporary Political Theory Research Group
- The New Political Communications Unit
- The Gender Institute

The department is well placed to supervise a wide range of dissertation topics and to deliver research-led teaching.

## Research facilities

In addition to the library collections on campus, postgraduates also have access to other libraries of the University of London, including Senate House and the London School of Economics.

## Your future career

Our postgraduate degrees help to hone the knowledge and transferable skills which will enable you to pursue a variety of potential careers in the public and private sectors, civil society and international organisations.

Graduate jobs include broadcast journalist, senior marketing officer, public affairs consultant and assistant campaigns manager.

Our graduate employers include the European Parliament, TikTok, International Committee of the Red Cross, Focaldata, the BBC, Greater London Authority the Home Office and HMRC as well as universities like LSE, Kent, Portsmouth and Edinburgh.



Study how intergovernmental organisations affect policy-making on MSc International Public Policy and Development

# Psychology

We are a vibrant research community with an international reputation for leading research. Our dynamic and varied research covers the social, emotional, cognitive and neural basis of social interaction decision-making, learning perception, memory, and language, through to more applied research topics in forensic, clinical, health, and developmental psychology.

“My experience at Royal Holloway has been incredibly fulfilling, offering me personal enjoyment and the skills to succeed. Looking ahead, having enjoyed my research project this year, I’m keen to pursue a PhD.”

**Kate**

MSc Psychology



## Profile

- The latest UK research assessment (REF 2021) confirmed the high international significance of our research, rating 100% of research impact as 4\* world-class and internationally excellent.
- We offer a stimulating intellectual environment, organised into four overlapping research groups: Health and Wellbeing; Social and Affective Processes; Language, Memory and Attention; Perception, Action and Decision-making.
- Our academic staff work at the forefront of their field in areas including cognitive and systems neuroscience, language and memory, and social, clinical, and forensic psychology.
- Our degrees develop transferable skills and prepare our graduates for employment in their desired careers.
- Research is generously supported by UK research and innovation councils, charities like the Leverhulme Trust, industrial investors and companies, academic trusts, healthcare companies, hospitals, and government.
- We're part of the School of Life Sciences and the Environment, advancing knowledge and changing lives.



Highly advanced facilities to augment your learning

# 3rd

in the UK for research

(THE, REF Institutions ranked by subject, 2022)

# 100%

research impact is rated world-leading quality

(Research Excellence Framework, 2021)

## Courses

MSc Applied Neuroscience

MSc Forensic Psychology

MSc Clinical Psychology

PG Diploma in Cognitive Behavioural Therapy (IAPT)

PG Certificate in Behavioural Couples Therapy

Doctorate in Clinical Psychology

MPhil/PhD

## Follow us



@RHULPsychology



RHULPsychology



rhulpsych

## Tuition fees 2025/26

UK students\*: £14,400-£18,000 per year

International students\*: £26,100-£31,100 per year

\* Fees may vary per course, please check website for full details.

For research degree tuition fees please see website.

## More course information and contacts

[royalholloway.ac.uk/courses](http://royalholloway.ac.uk/courses)

## More department information

[royalholloway.ac.uk/psychology](http://royalholloway.ac.uk/psychology)

## Entry requirements and how to apply

See page 106.

## **MSc Applied Neuroscience**

### **E** Egham campus, FT/PT, 12/60 months

This course gives a unique insight into neuroscience in real world settings. You'll study alongside our leading neuroscientists with contributions from external academics and professionals, and have access to the department's excellent neuroscience facilities such as TMS, VR, eye tracking, FMRI, and across the board EEG in our campus based laboratories. You'll learn to conduct applied neuroscience research projects and acquire practical experience for your future career in research or practice, such as using eye tracking and virtual reality.

#### **Example Modules**

- Neuroscience in the real world
- Neuroscience of emotion and decision making
- Applied neuroscience methods

## **MSc Forensic Psychology**

### **E** Egham campus, FT/PT, 12/60 months

This Masters, jointly run with Law and Criminology (page 66), is designed to give you in-depth insights into topical issues and new research in forensic psychology, in line with the British Psychological Society curriculum requirements. Staff from Psychology, Criminology and Law will help you to enhance your critical understanding of psychological theories and evidence relevant to the legal and criminal justice context. The course has strong links with external practitioners to further enrich your studies.

#### **Example modules**

- Forensic psychology and the legal and criminal justice context
- Forensic investigations: Cognitive and social approaches
- Forensic psychology practice with young people and families

## **MSc Clinical Psychology**

### **E** Egham campus, FT/PT, 12/60 months

Designed to equip you with knowledge and skills to pursue a career in a mental health setting or in mental health research. You will develop an in-depth understanding of clinical assessment, evidence-based treatment, and wellbeing, and an array of analytical, methodological, and statistical research skills. It is suitable for those interested in pursuing a PhD, a Doctorate in Clinical Psychology (DClin) or a Counselling degree in the future, as well as those who wish to work within a health care setting.

#### **Example modules**

- Clinical assessment and treatment approaches
- Professional clinical practice and skills
- Clinical Placement

## **PG Diploma in Cognitive Behavioural Therapy [IAPT]**

### **PG Certificate in Behavioural Couples Therapy**

#### **L** Based at 7a Woodfield Road, London W9 2NW **CBT, IAPT is FT 12 months, and BCT is PT 12 months**

Multidisciplinary courses, in collaboration with the Central and North West London Mental Health NHS Trust, aimed at NHS staff from the mental health and allied professions who have the need to use CBT in their everyday work. A suitable qualification in a mental health field or equivalent professional experience, and at least one year of post-qualification experience in mental health work, are required.

Contact: Course Administrator (020 7266 9580)  
**central-london-cbt.com**

## **Doctorate in Clinical Psychology**

### **E** Egham campus, FT, 36 months

A course to qualify Clinical Psychologists for practice in the NHS. Places are funded by NHS England. Approximately 56 places are available.

Contact: The Clearing House for Clinical Psychology **clearing-house.org.uk/courses/courses-z/royal-holloway**

#### **Example modules**

- Clinical skills
- Clinical psychology in various populations (children and young people, adults, older adults, learning disabilities and long term needs)
- Adult and child neuropsychology
- Health psychology
- Interventions (cognitive behavioural, systemic, psychodynamic, groups)

## **Research opportunities**

We invite applicants for our PhD programme to discuss possible research topics with a potential supervisor before submitting a formal application. Staff details can be found on our website. You can apply for PhD studentships from the department and from external sources, such as the ESRC-funded South-East Network for Social Sciences doctoral training partnership and through the London Interdisciplinary Doctoral programme (LIDo).

### Research facilities

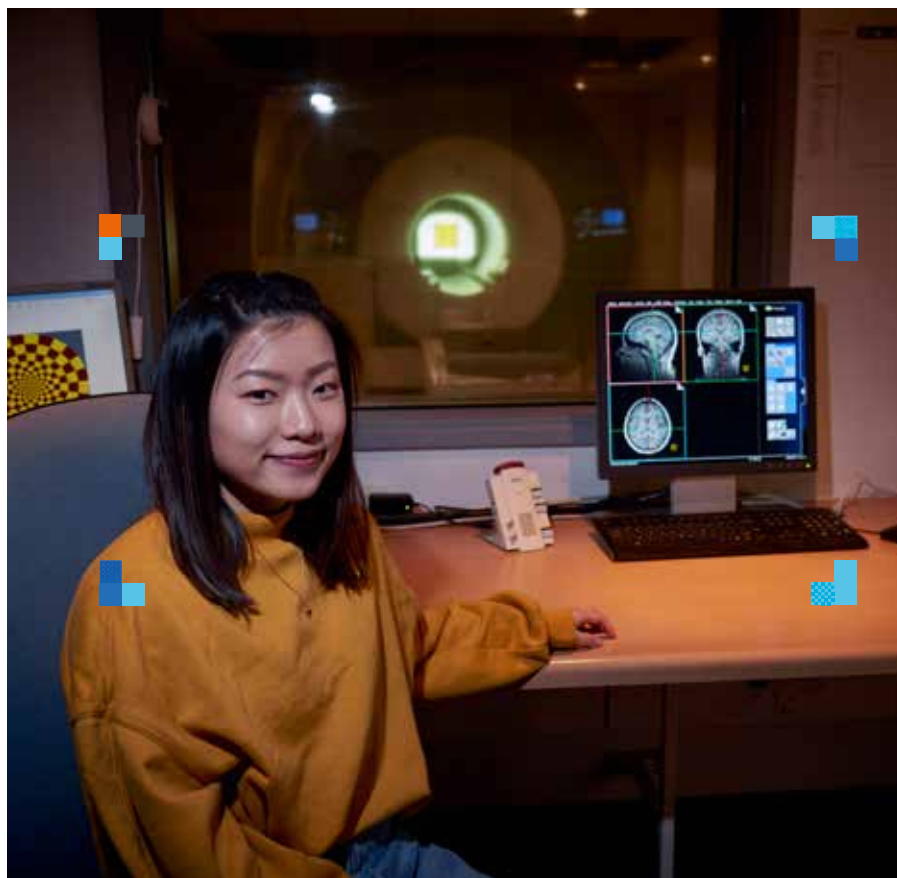
We have a research-dedicated 3T MR scanner for brain imaging, electroencephalography (EEG) for recording brain activity, and transcranial magnetic stimulation (TMS); virtual reality laboratory, systems for recording eye movements, electropalatograph for analysis of articulatory movements, and equipment for measurement of reaching and grasping movements. We also have a test library of psychometric instruments, soundproof testing booths and observation and infant-testing laboratories.

Research groups have frequent seminars in which members present their recent findings, discuss other research and develop ideas and future plans, and host invited external speakers.

### Your future career

Our graduates are well-equipped to progress to further PhD study, careers in mental health or to careers in applied settings in commercial and governmental organisations. Previous graduates have entered into a variety of interesting careers, from Clinical Psychologist in the NHS, programme management, HR positions, marketing research, Research Clinical Psychologist at the Wellcome Trust, to research and academic positions.

We have excellent links with hospitals, schools, social services, industrial sponsors and charities as well as other universities and institutes.



Our department MRI scanner



# Social Work

Based in the interdisciplinary Department of Law and Criminology within the School of Law and Social Sciences. Our research and teaching are influenced by contemporary social work, health and social policy, and informed by a sound knowledge and value base.

We support you to become critically reflective practitioners who can provide effective social work provision for the most vulnerable in our society within an anti-oppressive and social justice framework. We undertake a wide variety of commissioned research in the national and international social work and health arena, which informs our taught courses.

“I felt empowered to challenge myself. Beyond the classroom, Royal Holloway will provide an enriching atmosphere and with students and academics from diverse backgrounds, you’ll feel like you belong.”

**Jeffrey**

MSc Social Work



## Profile

- Strong partnerships across London/Greater London region offering a great variety of placements in all settings.
- Attracts a diverse student group.
- Qualified social work academic teaching staff.
- Teaching informed by our research.
- Taught at our central London location.
- High level of employability within six months of qualification.
- A solid grounding in integrating social work theory and research into practice.
- We are part of the interdisciplinary School of Law and Social Sciences, focusing on social inquiry, democracy, justice, human rights and economic development.



# 100%

research impact is rated world-leading or internationally excellent

(Research Excellence Framework, 2021)



Advance your career in two years

## Courses

MSc Social Work

MSc Advanced Practice

MPhil/PhD

## Follow us



@RHULsw



RHULSocialWork

## Tuition fees 2025/26

UK students: £9,800 per year

International students: £20,800 per year

For research degree tuition fees please see website.

## More course information and contacts

[royalholloway.ac.uk/courses](https://royalholloway.ac.uk/courses)

## More department information

[royalholloway.ac.uk/socialwork](https://royalholloway.ac.uk/socialwork)

## Entry requirements and how to apply

See page 106.



“The teaching staff guide you to be the best Social Worker you can be and equip you with skills to apply in every part of life. I highly recommend this course, and recommend that you strap yourself in for the journey.”

**Jade**

MSc Social Work

## **MSc Social Work**

**L Central London, FT, 24 months**

Suitable if you want to embark on a career in social work, no matter the subject of your first degree, this two-year course will fully prepare you for a professional career in the statutory or voluntary social work field. On successful completion you'll be able to register with Social Work England.

This course runs in close partnership with social work and social care agencies and local authorities, where you will benefit from two practice learning placements – experiencing the world of social work first hand, and learning from direct practice with qualified practitioners, service users, carers and other professionals. Practice-based learning is integrated with university-based teaching and learning throughout.

### **Example modules**

- Readiness for practice
- Life course and observational learning
- Law and policy for social work
- Knowledge and skills for practice
- Social work research and dissertation

## **MSc Advanced Practice**

**L Central London, PT, 36-60 months**

This MSc course builds upon the longstanding partnerships that the department has with employer agencies and service user groups. The course provides professionally and academically rigorous post-qualifying postgraduate social work training that enables you to critically reflect on your practice, drawing on current research and theoretical frameworks. The range of modules available within the programme supports qualified social workers in their development from the point of completion of the Assessed and Supported Year in Employment (ASYE) through to advanced practice and leadership roles.

You can choose to specialise in one of the following areas:

1. Children and families
2. Adults
3. Leadership & management
4. Professional education.

### **Example modules**

- Consolidation of professional practice
- PEPS
- Risk and decision-making
- Working with complexity and safeguarding:  
Advanced practice with adults

- Working with complexity and safeguarding: Advanced practice with children and families
- Project development: Advanced practice for leadership and innovation
- Leading and managing teams and systems
- Supporting and assessing CPD

### Research opportunities

Applications are invited for places on our MPhil and PhD research programmes. We offer a variety of specialisms focusing on professionalism in contemporary practice and policy in social work. Our research interests are interdisciplinary, we contribute to four research clusters in the School of Law and Social Sciences: Families and Children, Health and Social Care, Rights and Freedom, and Crime and Punishment.

Academic staff are happy to discuss research projects in advance of a formal application. Staff research and contact details can be found on our website. Please write directly to your proposed supervisor.

Our research areas include:

- Adult safeguarding, mental health and mental capacity
- Inequalities, justice and power

- Contemporary professionalism
- Race and intersectionality
- Poverty and marginalisation
- Emotions, professional practice, critical reflection
- Risk, assessment, decision-making & discretion
- Pedagogy and social work education

### Your future career

Our Social Work graduates have high employability rates, enjoying careers in statutory and voluntary/ third sector organisations. Graduates of the MSc Social Work can apply for registration with Social Work England, the body responsible for social work regulation. Qualified social workers can also continue their professional and academic development through taught post-qualifying degrees or research opportunities with us, for instance on the MSc Advanced Practice. Our Masters courses are a solid basis for career progression and further academic research and training such as a PhD or Professional Doctorate.



# EGHAM CAMPUS MAP



Map correct at September 2024





## Key

- Academic
- Social and Sport
- Accommodation
- Car park
- Accessible car parking
- Steps, not accessible
- Rough path, may not be accessible
- Bus stop
- Pedestrian crossing
- Café

The campus is a 20-minute walk from Egham train station or you can use the regular university bus service. Surrounding towns such as Egham, Staines and Windsor offer entertainment, nightlife, restaurants and shopping. There are beautiful places to visit on our doorstep, including Windsor Great Park and areas around the River Thames.

## Campus highlights

The spectacular Grade I-listed Founder's Building is at the heart of campus. It's where our first students lived and studied and is built around two quads. It contains a café, dining hall, and GP surgery, as well as a beautiful chapel and Picture Gallery, with a famous collection of Victorian art. Opposite Founder's is the Emily Wilding Davison Building, which houses an impressive library, with plenty of space for individual and group study, a Careers and Enterprise Hub, Events space, café and shop.



# LONDON MAP AND LOCATION

You'll find us in the heart of London's Bloomsbury, an area packed with museums, libraries, production houses and agencies, as well as shops, pubs and cafés.

You'll be able to soak up everything the capital has to offer, from work experience and networking to enjoying the culture, food and nightlife of a vibrant city.



# SUPPORTING YOU

Studying at postgraduate level can be a big step up with new challenges. Our friendly and supportive community of students, academics and professional teams work together to help you achieve your goals.

**Wellbeing** is a key focus at Royal Holloway and our teams of advisors support a huge range of issues and can signpost you in the right direction.

**Disability and neurodiversity** support starts before you join us. Just let us know if you have any conditions or specific needs so we can help with adjustments.

**Mental and physical health support** comes from our mental health practitioners and professionally accredited counselling service, as well as the NHS doctors surgery, based at the Egham campus.

**Funding advisors** will support any financial concerns, while the Hall life team will make sure your experience in student accommodation goes smoothly.

**The Multifaith Chaplaincy** is available to everyone regardless of faith or belief.

**The academic skills team** provides workshops, courses and other resources to improve your academic writing, research and maths skills.

International students have their own dedicated team to support their move to the UK and if English isn't your first language, our Pre-sessional English Language programme could help.

[royalholloway.ac.uk/pelp](https://royalholloway.ac.uk/pelp)



“I would have struggled without the Wellbeing team and the financial support and grants they were able to provide. It meant I could focus on studying and develop my artistic voice as a theatre director.”

**Eduardo**

MA Theatre Directing



# RESEARCH DEGREES

If you're ready to take the next step in your academic journey, we offer research degrees, supported by our Doctoral School.

- Doctor of Philosophy (PhD) will see you take on a research project with a thesis that makes an original contribution to knowledge. They normally take a minimum of three years.
- Master of Philosophy (MPhil) requires a thesis that is usually a record of original work or an ordered and critical exposition of existing knowledge. They usually take a minimum of two years.







“My mentors inspired me to be an academic who puts their work to the test. Reading and writing about the intersections of women and technology sparked something, and I started my book series. I dedicated the first book to my amazing advisors, who pushed me to become who I am today.”

### **Courtney**

PhD student in the School of Business and Management, and author of a children's book aimed at encouraging girls into STEM subjects.

### **How to apply**

You'll need to have an idea of a research proposal and what direction you want to take with your degree. To apply, first select a supervisor from one of our academic departments. Take a look at our website to explore our departments and current research projects. Then contact the relevant Director of Postgraduate Research Education for an informal discussion about your proposal.

**[royalholloway.ac.uk/PGdirectors](http://royalholloway.ac.uk/PGdirectors)**

### **Your study**

You'll have one or more supervisors but you'll lead your research. You'll have formal annual reviews, where you'll need to prepare a written submission. In your final year you'll focus on writing and finishing your thesis before presenting your research at an oral viva voce exam.

### **Funding**

A Royal Holloway studentship could provide funding for fees, stipend or both. They are awarded for three and a half years (full-time) or seven years (part-time). You'll need to speak to your supervisor or Director of Postgraduate Research Education to be considered.

You could also get a studentship from an external provider, depending on your subject.

PhD students also have the opportunity to take on some teaching responsibility, supported by a training programme.

Contact **[doctoralschool@royalholloway.ac.uk](mailto:doctoralschool@royalholloway.ac.uk)** for more information on funding a research degree.



# ENTRY REQUIREMENTS AND HOW TO APPLY

## Entry requirements

We usually ask for a UK Second Class Honours degree and, in some cases, additional professional experience, but we do accept applications with non-standard qualifications or in an area different from the one you're applying for. Visit [royalholloway.ac.uk/courses](https://royalholloway.ac.uk/courses) for more information.

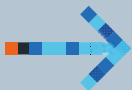
## Application process

# 1

### Before you apply

Find out everything you can about the course you'd like to join, from the website.

Please speak to the Disability and Neurodiversity team if you have any medical or disability needs that require reasonable adjustments. You can also contact the department you are looking to study with, or our Admissions team.

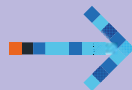


# 2

### When to apply

Courses starting in September 2025 will have an application deadline in the summer. If your course has a January 2026 start date (availability not confirmed at time of going to print), the application deadline will be in autumn 2025. See our website for full details.

If you're planning to apply for financial support and/or a student visa, make sure you also check the relevant deadlines.



## Terms and conditions

Royal Holloway's Admissions Policy provides comprehensive details of all aspects of admission to Royal Holloway, University of London, and is available on our website. This document provides you with all the important information you need about our admissions procedures and how your application will be considered. You are advised to read through this document prior to submitting your application. When you accept an offer of a place to study at Royal Holloway, a legal contract is formed between you and

the University. At the point of offer, we will provide you with the Terms and Conditions associated with your admission to Royal Holloway, including links to all relevant policy documents and your rights should you wish to withdraw acceptance of your offer. We advise you to read these carefully before you accept your offer. If you would like to give us any feedback on your experience as an applicant to Royal Holloway, or if you have any cause for complaint about the way your application was

If you're thinking of applying for a postgraduate research course, please note different requirements and deadlines may apply.

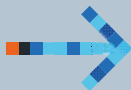
You can contact our Admissions team by visiting [royalholloway.ac.uk/applicationquery](https://royalholloway.ac.uk/applicationquery) or calling +44(0)1784 414944.

3

### Apply online

Set up a profile on our online applicant portal and upload all your relevant documents.

Once you've submitted your application, you can track its progress online. You should expect a decision from us within three to four weeks.



4

### Decision and offer

You may be invited to an interview before we make a decision. If not, we'll look at the information in your application, plus your references and any relevant supporting materials.

If we're able to make you an offer, we'll let you know by email, making clear any conditions that may apply.

To guarantee your place, before you can join us, you must have met Royal Holloway's entry requirements and paid the required deposit.

dealt with, details of who to contact are provided in our Admissions Policy which can be found at [royalholloway.ac.uk/admissionspolicy](https://royalholloway.ac.uk/admissionspolicy)

This prospectus was edited and produced by Royal Holloway's Marketing and Communications team. It was published in October 2024 and the information given was correct at that time. It is intended primarily for those considering admission to Royal Holloway as postgraduate students in September 2025. As described in our terms and conditions

(found online), occasionally it may be necessary for the University to vary the content and delivery of programmes. The University endeavours to keep such changes and disruption to a minimum, but there is a possibility that changes may occur before or after admission, and differ from what is printed in this prospectus. We advise all applicants to visit [royalholloway.ac.uk/prospectus-updates](https://royalholloway.ac.uk/prospectus-updates) prior to making any application for entry.

# COURSE DIRECTORY

Course	Full-time/part-time/ distance learning	Duration (months)	Page
<b>E</b> Accounting and Financial Management (MSc)	FT	12	14
<b>E</b> Advanced Electronic and Electrical Engineering (MSc)	FT/PT	12/24	40
<b>L</b> Advanced Practice (MSc)	PT	36-60	96
<b>E</b> AI for Business (MSc)**	FT	12	14
<b>E</b> Ancient History (MA)	FT/PT	12/24	20
<b>E</b> Applied Data Science (MSc)	FT	12	24
<b>E</b> Applied Data Science and Cyber Security (MSc)	FT	12	60
<b>E</b> Applied Neuroscience (MSc)	FT/PT	12/60	92
<b>E</b> Artificial Intelligence (MSc)*	FT/PT	12/60	24
<b>E</b> Biological Sciences Research (MSc)	FT/PT	12/24	12
<b>E</b> Biomedical Electronic Engineering (MSc)	FT/PT	12/24	40
<b>E</b> British Literature, Theatre, Cultures (MA)**	FT/PT	12/24	28
<b>E</b> Business Analytics (MSc)	FT	12	14
<b>E</b> Classical Art and Archaeology (MA)	FT/PT	12/24	20
<b>E</b> Classical Reception (MRes)	FT/PT	12/24	20
<b>E</b> Classics (MA)	FT/PT	12/24	20
<b>E</b> Clinical Psychology (Doctorate)	FT	36	92
<b>E</b> Clinical Psychology (MSc)	FT/PT	12/60	92
<b>L</b> Cognitive Behavioural Therapy (Certificate/Diploma)	PT	12	92
<b>E</b> Comparative Literature and Culture by Research (MA)	FT/PT	12/24	62
<b>E</b> Computational Finance (MSc)*	FT/PT	12/24	24/36
<b>E</b> Computer Science by Research (MSc)	FT/PT	12/24	24
<b>E</b> Corporate Finance (MSc)	FT	12	36
<b>L</b> Creative Writing (MA)	FT/PT	12/24	44
<b>E</b> Criminology (MSc)**	FT/PT	12/24	66
<b>E</b> Cultural Geography (Research) (MRes)	FT/PT	12/24	48
<b>E</b> Cyber Security (Distance Learning) (MSc)	PT/DL	24-60	60

\* Available with a Year in Industry option

\*\* Degree under development

Course	Full-time/part-time/ distance learning	Duration (months)	Page
<b>E</b> Data Science and Analytics (MSc)*	FT/PT	12/60	24
<b>L</b> Digital Marketing (MSc)	FT	12	14
<b>E</b> Drama and Theatre by Research (MA)	FT/PT	12/24	28
<b>E</b> Earth Sciences by Research (MSc)	FT/PT	12/24	32
<b>E</b> Economics (MSc)	FT	12	36
<b>E</b> Elections, Campaigns and Democracy (MSc)	FT/PT	12/24	88
<b>E</b> Electronic Engineering by Research (MSc)	FT/PT	12/24	40
<b>E</b> Energy Geosciences (MSc/PG Cert)	FT/PT	12/24	32
<b>E</b> Engineering Geology and Hydrogeology (MSc)	FT/PT	12/24	32
<b>L</b> Engineering Management (MSc)	FT/PT	12/24-60	40
<b>L</b> Engineering Management with Cyber Security	FT/PT	12/24-60	40
<b>E</b> English by Research (MA)	FT/PT	12/24	44
<b>E</b> English Literature (MA)	FT/PT	12/24	44
<b>E</b> English Literature: Medieval Studies (MA)	FT/PT	12/24	44/56
<b>E</b> English Literature: Victorian Literature, Art and Culture (MA)	FT/PT	12/24	44/56
<b>E</b> Entrepreneurship and Innovation (MSc)	FT/optional Year in Business	12/24	14
<b>E</b> Environmental Diagnosis and Management (MSc)	FT/PT	12/24	32
<b>E</b> European Philosophy (MA)	FT/PT	12/24	80
<b>E</b> Film, Television and Digital Production by Research (MA)	FT/PT	12/24	72
<b>E</b> Finance (MSc)	FT	12	36
<b>E</b> Forensic Psychology (MSc)	FT/PT	12/24-60	66/92
<b>E</b> French by Research (MA)	FT/PT	12/24	62
<b>E</b> Gender Studies			
– Gender Studies and Global Futures (MSc)	FT/PT	12/24	48
– Gender Studies and History (MSc)	FT/PT	12/24	56
– Gender Studies and History and Socio-Legal Studies (MSc)	FT/PT	12/24	56/66
– Gender Studies and International Relations (MSc)	FT/PT	12/24	88
– Gender Studies and Philosophy (MSc)	FT/PT	12/24	80
– Gender Studies and Politics (MSc)	FT/PT	12/24	88

# COURSE DIRECTORY

Course	Full-time/part-time/ distance learning	Duration (months)	Page
<b>E</b> Geopolitics, Development, Security and Justice (MRes)	FT/PT	12/24	48
<b>E</b> German by Research (MA)	FT/PT	12/24	62
<b>E</b> Global Futures (MSc)	FT/PT	12/24	48
–Global Futures: Culture and Creativity (MSc)	FT/PT	12/24	48
–Global Futures: Geopolitics and Security (MSc)	FT/PT	12/24	48
–Global Futures: Justice, Development and Sustainability (MSc)	FT/PT	12/24	48
<b>E</b> Global Health: Society, Culture and Behaviour (MA)	FT/PT	12/24	52
<b>E</b> Global Health: Economics and Policy (MSc)	FT	12	36
<b>E</b> Global Health: Food Security, Sustainability and Biodiversity (MSc)	FT/PT	12/24	52
<b>E</b> Global Health: Human Health and the Environment (MSc)	FT/PT	12/24	52
<b>E</b> Hispanic Studies by Research (MA)	FT/PT	12/24	62
<b>E</b> History (MA)	FT/PT	12/24	56
<b>E</b> History by Research (MA)	FT/PT	12/24	56
<b>E</b> History: Crusader Studies (MA)	FT/PT	12/24	56
<b>E</b> History: Gender Histories (MA)	FT/PT	12/24	56
<b>E</b> History: Histories of Conflict and Violence (MA)	FT/PT	12/24	56
<b>E</b> History: Medieval Studies (MA)	FT/PT	12/24	56
<b>E</b> Holocaust Studies (MA)	FT/PT	12/24	56
<b>E</b> Human Resource Management (MSc)	FT	12	14
<b>E</b> Immersive Storytelling (MA)**	FT	12	72
<b>E</b> Information Security (MSc/Certificate/Diploma)*	FT/PT	12/24/48	60/70
<b>E</b> International Business Management (MSc)	FT	12	14
<b>E</b> International Business Management (Marketing) (MSc)	FT	12	14
<b>E</b> International Business Management (Strategy and Leadership) (MSc)	FT	12	14
<b>E</b> International Media Management (MA)	FT	12	72
<b>E</b> International Public Policy and Development (MSc)	FT/PT	12/24	88
<b>E</b> International Relations (MSc)	FT/PT	12/24	88
<b>E</b> International Security (MSc)	FT/PT	12/24	88

\* Available with a Year in Industry option

\*\* Degree under development



Course	Full-time/part-time/ distance learning	Duration (months)	Page
<b>E</b> Italian by Research (MA)	FT/PT	12/24	62
<b>E</b> Late Antique and Byzantine Studies (MA)	FT/PT	12/24	56
<b>L</b> Logistics and Supply Chain Management (MSc)	FT	12	14
<b>E</b> Machine Learning (MSc)*	FT/PT	12/60	24
<b>E</b> Marketing (MSc)	FT	12	14
<b>E</b> Media, Power and Public Affairs (MSc)	FT/PT	12/24	88
<b>E</b> Microwave and Optical Fibre Communications (MSc)	FT/PT	12/24	40
<b>E</b> Music (MMus/MMus CPD)	FT/PT	12/24/60	76
<b>E</b> Music Performance (PG Dip)	FT/PT	12/24	76
<b>E</b> Occupational Therapy (pre-reg) (MSc)	FT	24	52
<b>E</b> Past Climate and Environmental Change	FT/PT	12/24	48
<b>E</b> Philosophy by Research (MA)	FT/PT	12/24	80
<b>E</b> Physics by Research (MSc)	FT/PT	12/24	84
<b>E</b> Political Philosophy (MA)	FT/PT	12/24	80
<b>L</b> Producing Film and Television (MA)	FT	12	72
<b>L</b> Project Management (MSc)**	FT	12	14
<b>E</b> Public History (MA)	FT/PT	12/24	56
<b>E</b> Rhetoric (MRes)	FT/PT	12/24	20
<b>E</b> Smart Power Systems (MSc)	FT/PT	12/24	40
<b>L</b> Social Work (MSc)	FT	24	96
<b>E</b> Sustainability and Management (MSc)	FT/PT	12/24	14/48
<b>L</b> Terrorism and Counter-Terrorism Studies (MSc)	FT/PT	12/24	66
<b>E</b> Theatre Directing (MA)	FT	12	28
<b>E</b> Writing for Screen, Stage and Radio (MA)**	FT/PT	12/24	28



### **Find out more**

Sign up to our mailing list to receive information about your subject and hear about events and scholarships.  
[royalholloway.ac.uk/sign-up](https://royalholloway.ac.uk/sign-up)



### **Postgraduate events**

We hold online and on-campus events for prospective postgraduate students throughout the year.  
[royalholloway.ac.uk/pgevents](https://royalholloway.ac.uk/pgevents)

Printed by a certified carbon-balanced printer committed to reducing their impact on the environment, on sustainably-sourced paper from managed forests.

Please recycle after use.