

Master of Rehabilitation Sciences and Physiotherapy

2025-2026



The science you need to
take your **clinical skills**
to the next level



University
of Antwerp

| Let's shape the future

Table of contents

In brief	04
In detail	05
Programme structure	06
Job opportunities	10
Why choose UAntwerp	12
Testimonial	15
Admission criteria	16
Application procedure	18
ECTS credits	19





The teaching is student-centred and evidence-based. This is a whole new approach for me and it intensifies my fascination for scientific research.



In brief

As a physiotherapist you are not only a **healthcare provider**, but also a **scientist** and a **healthcare manager**. In this Master's programme you will acquire and develop the competencies you need for these professional roles. The programme offers evidence-based clinical education in rehabilitation in combination with comprehensive training in scientific research. The cornerstones of this unique programme are active and student-centred learning, a broad mixture of teaching and examination methods, a Master's thesis and clinical internships.

In detail

The Master of Rehabilitation Sciences and Physiotherapy is specifically designed for students who are keen to pursue **advanced studies in the domain of rehabilitation and physiotherapy**. This unique programme focuses on the scientific perspective and evidence-based practice in physiotherapy. The programme provides a balanced combination of theoretical training and clinical practice.

During this two-year programme, you deepen your role as a care provider, care manager and scientific researcher, and integrate these aspects into practice.

During your **internships** you will become acquainted with a multitude of patients and conditions. The university has built up an **extensive internship network** in Belgium and abroad: hospitals, rehabilitation centres, aged care and nursing homes, schools, sports clubs and independent practices. The internship forms the bridge between your studies and your professional career.

The **Master's thesis** is another key element of this programme. It involves a supervised research project that you conduct independently. This is also an opportunity to actively participate in the projects of our specialised research units that conduct translational research in international settings.



Classes are held on Campus Drie Eiken, the life sciences campus of the university. This campus has very modern education and research infrastructure, and is surrounded by greenery.

Programme structure

The Master of Rehabilitation Sciences and Physiotherapy (120 ECTS credits), is a two year full-time programme if the model path is followed. The first year of the Master is the same for everyone, the second year depends on the major you choose.

Year 1: State-of-the-art lectures and skills training

The compulsory courses in the first year (60 ECTS credits) will help you integrate your existing knowledge within the field of physiotherapy. Teaching methods vary from class contact teaching to individual tasks, group assignments and practical sessions in smaller groups.

During the spring semester, you will spend **12 weeks on clinical internships**, where you will learn how to deal with a variety of patients and diseases within private practices or hospitals in Belgium or abroad.

You will conclude your first year with the start of a **Master's thesis** based on a systematic literature review.

Year 2: Specialisation and Master's thesis

In the second year (60 ECTS credits) all courses are related to the **field of your major**:

Neurological conditions: This major focusses on the theoretical aspects of advanced methods in neurological rehabilitation.

Internal conditions: This major focusses on the theoretical aspects of advanced methods in rehabilitation of patients with respiratory, cardiovascular and/or metabolic disorders.

The specialised courses of these majors are offered in collaboration with other Flemish universities and thus comprise expertise from various top-class research groups.

You will also do **internships** related to your major (13 weeks), write an evidence-based practice case report and finish your **Master's thesis**. You will conduct scientific research (preferably in line with the thesis of year 1) within the domain of rehabilitation and physiotherapy, analyse data and publish the results as a scientific paper.

Bridging programme

The bridging programme (45 ECTS credits) allows students with a professional bachelor degree in Physiotherapy to acquire the knowledge and competences they will need to proceed to the Master of Rehabilitation Sciences and Physiotherapy. The bridging programme takes one academic year (part-time) and is taught in English.



Curriculum

Year 1

Internal Conditions and Neurological Conditions

Compulsory courses ECTS credits 60

Integrated Case	3
Physiotherapy in Mental Health Care and Society	3
Athletic Training Principles	3
Neurological Physiotherapy 3	4
Anatomy 4: Dissections	4
Physical Applications and Complementary Therapies	3
Cardiorespiratory Physiotherapy 2	6
Physiotherapy in Internal Diseases	5
Clinical Internships	16
Inter-professional Collaboration in Health Care	3

Master's thesis in

Rehabilitation Sciences and Physiotherapy:

part 1 10

Year 2

Internal Conditions

Compulsory courses ECTS credits 60

Advanced Methods in Rehabilitation of	
Patients with Respiratory Disorders	3
Rehabilitation in Critically Ill Patients	3
Rehabilitation of Cardiovascular Disorders	3
Rehabilitation of Metabolic Disorders	3
Cardiovascular, Respiratory and Metabolic	
Aspects of Rehabilitation in Children	3
Rehabilitation of Oncological Disorders	3
Internship in Rehabilitation of Patients	
with Internal Disorders	16
Physical Training Therapy for Specific Target Groups	3
Capita Selecta in Rehabilitation of Internal Disorders	3

Optional courses	ECTS credits 6
-------------------------	-----------------------

Master's thesis in Rehabilitation Sciences and Physiotherapy: part 2	ECTS credits 14
---	------------------------

Total	120
--------------	------------

Year 2

Neurological Conditions

Compulsory courses	ECTS credits 60
---------------------------	------------------------

Neuroscientific Aspects of Neurological Rehabilitation	4
Clinical Neuropsychology in Neurological Rehabilitation	3
Physiotherapeutic Theory and Practice for Neurological Rehabilitation	8
Rehabilitation Technology	3
Evidence-based Practice Case Report	3
Internships Neurological Rehabilitation Sciences and Physiotherapy	19

Optional courses	ECTS credits 6
-------------------------	-----------------------

Master' thesis in Rehabilitation Sciences and Physiotherapy: part 2	ECTS credits 14
--	------------------------

Total	ECTS credits 120
--------------	-------------------------

Job opportunities

The positive effects of physiotherapy have been well documented in scientific literature. **The expertise of physiotherapists is highly appreciated and sought-after**, and physiotherapists are becoming increasingly important in the changing landscape of healthcare.

Intramural healthcare

You will have the necessary practical skills and theoretical knowledge to start a professional career as a physiotherapy practitioner. You will be well prepared to pursue a career in a clinical setting, such as a rehabilitation clinic, a day centre or a hospital where you will work in collaboration with other clinical experts (medical doctors, nurses, occupational therapists) and where you will be in close contact with your patients.

The professional network you have developed throughout your clinical internships and Master's thesis work will be an advantage when looking for employment in the broad field of rehabilitation sciences and physiotherapy.

Extramural healthcare

You can also start working in a private practice or choose to set up your own private clinic, in collaboration with partner physiotherapists or other ambulant care providers.

Academic career

The research skills you have developed during the programme may also help you to continue your education in a PhD or an Advanced Master in Belgium or abroad.

Orientation year

After completing your studies you can choose to look for work opportunities in Belgium. You can apply for an orientation year and extend your stay in Belgium by 12 months. Guidance and administrative assistance with this process is available through the university.



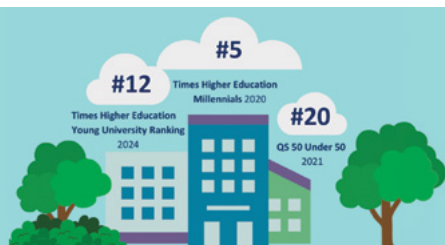
Why choose UAntwerp

Our university is located in the **city of Antwerp**, in the heart of Belgium and Europe. The port of Antwerp is one of the biggest in the world. Antwerp is not just an ancient medieval and baroque city, full of history. It is also a bustling metropolis with a vibrant social scene, impressive architecture and cultural contrasts. Over 170 nationalities live here, more than in New York! This cosmopolitan vibe is also reflected at the University of Antwerp. English is widely spoken in Antwerp, though if you learn Dutch during your stay here you will become a local in no time.

First-rate research and education make the University of Antwerp a wonderful place to study and to work. We foster the nexus between research and education. Internationalisation is key to our mission. It is no coincidence that the University of Antwerp is a partner in a highly promising European university network, the Young Universities for the Future of Europe www.YUFE.eu.

As home away from home to over **20,000 students**, the University of Antwerp prides itself on operating on a human scale. Our faculty and staff will welcome you into top-notch infrastructure on one of our four campuses. While you're here you are also invited to enjoy our vibrant cultural programme, sports facilities and many student services.

The University of Antwerp **scores extremely well** in Young University Rankings



Why study Rehabilitation Sciences and Physiotherapy in Antwerp?

Hands-on and academic. Your training as a professional healthcare provider and healthcare manager goes hand in hand with an academic approach. In addition to clinical internships and practical lessons, scientific research is predominant.

Inspiring clinical internships. Gain hands-on experience as an intern at different clinical locations in Antwerp and its periphery. An internship abroad is also possible.

International exposure. The classrooms are diverse and international. You will work with students from all over the world, as well as with local students.

Evidence based learning. Scientific knowledge and insights are the foundation of your studies. The cross-fertilisation of subject-specific skills with clinical input makes you a versatile professional.

Green campus and the city within reach. Your classes are held on Campus Drie Eiken, located in the green outskirts of Antwerp. You will have lectures in large, modern auditoriums and practice your skills in the well-equipped practical rooms.



Make-over

Campus Drie Eiken recently underwent **a real make-over**. A tower and a low-rise building with student rooms, a large bicycle parking area, a space for commercial activities, a brand new sports hall and a student restaurant with 400 extra dining places have been constructed. Campus Drie Eiken now has a **vibrant heart** and is alive 24/7.



Testimonial

I obtained my BSc degree in Physiotherapy and Rehabilitation in 2016 at the Universidad Marista Valladolid in Morelia, México. After my studies, I did a year of internship at the National Institute of Rehabilitation, one of the most important institutions in this field.

How come you decided to pursue a Master's degree at UAntwerp?

When I finished the internship, I was so eager to learn more and to acquire more specialised knowledge. I realised that this was not possible if I stayed in Mexico and therefore I decided to go for a Master's degree abroad. But why Antwerp? Within different options in Europe, I chose the University of Antwerp because it offered a very interesting and well-structured English programme; that combined theory, practice and research. In addition, the University of Antwerp is ranked among the best universities in the world and it is recognised by its high standards in education and research. I chose for the 'Internal Conditions' specialisation because I always showed particular interest in this field and because I think this programme is very complete and well-structured.

What do you think of our city?

Antwerp is a very nice city, I really love it! The central station is one of the most beautiful stations I have ever seen! Sitting by the river Scheldt and watching the sunset with my friends, shopping in the Meir and admiring the Grote Markt are some of my favourite things to do in Antwerp.

Dulce Flores, Mexico



Admission criteria

Direct access to the Master's programme:

- Academic Bachelor's degree in Rehabilitation Sciences and Physiotherapy

Through a bridging programme

Direct access to the bridging programme:

- (Professional) Bachelor of Physiotherapy
- HBO Bachelor of Physiotherapy (the Netherlands)

After permission:

- Other professional Bachelor's degrees in the field of physiotherapy

Through a preparatory programme

After permission, based on the application:

- Other academic Bachelor's degrees in the field of physiotherapy



The tutors pay a lot of attention to individual students and provide scientific literature for a more comprehensive understanding of the subjects.

Since the programme is taught in **English**, candidates with a prior degree issued outside Belgium, the Netherlands or Luxembourg are required to demonstrate their proficiency in English. This is done by **submitting a language certificate** showing their TOEFL, IELTS, ITACE or Cambridge English test results (the level required can be checked on www.uantwerpen.be/admission).

No other proficiency tests will be accepted, and absolutely no application will be considered without such a test certificate.

For students who hold a prior degree awarded by an English-speaking university from Australia, Canada, Ireland, New Zealand, United Kingdom or the USA, the certified diploma and transcripts suffice, provided they confirm that the entire university study was completed in English. Absolutely no other diplomas will be accepted as evidence, even if the applicant has followed an exclusively English-taught programme.

Please note that the Board of Admission may still ask for additional proof of proficiency in English.



Application procedure

Candidates with a Bachelor's or Master's degree from a higher education institution in Belgium, the Netherlands or Luxembourg can enrol directly. Candidates who do not fulfil this condition or who need a visa must submit an online application through the online application tool **Mobility Online**. Applications for the academic year 2025-2026 can be started in Mobility Online from early November 2024 onwards.

Application deadlines

To submit an application through Mobility Online

For non-EEA * nationals and for students who need a visa: **before 1 March 2025**

For EEA nationals: **before 1 June 2025**

Enrolment deadline

Early October

Enrolments start on 1 July 2025.

The academic year 2025-2026 starts on Monday 22 September 2025.

* **EEA** = European Economic Area

Member states:

Austria, Belgium, Bulgaria, Croatia, Cyprus, Czech Republic, Denmark, Estonia, Finland, France, Germany, Greece, Hungary, Iceland, Ireland, Italy, Latvia, Liechtenstein, Lithuania, Luxembourg, Malta, the Netherlands, Norway, Poland, Portugal, Romania, Slovakia, Slovenia, Spain and Sweden

ECTS credits

The University of Antwerp applies the '**European Credit Transfer and Accumulation System**' (ECTS) in all its degree programmes.

A full-time one-year study programme amounts to **60 ECTS credits** (30 ECTS credits per semester), which implies a student workload of about 1500 to 1800 hours. One ECTS credit stands for 25 to 30 hours of work including contact hours, preparatory work, study and assessment.



Quick facts

Level

Master

Language

English

Credits

120 ECTS credits

Number of years

2

Tuition fee per year *

EUR 1157 for EEA nationals

EUR 3100 for non-EEA nationals

Campus

Campus Drie Eiken

Faculty

Medicine and Health Sciences

More information

[www.uantwerpen.be/
rehabilitation-sciences-
and-physiotherapy](http://www.uantwerpen.be/rehabilitation-sciences-and-physiotherapy)



* subject to yearly revision

Contact

Master of Rehabilitation Sciences and Physiotherapy

physiotherapy@uantwerpen.be

International Students Office

internationalstudents@uantwerp.be

T: +32 3 265 31 89

www.uantwerp.be

Follow us!



Facebook



Instagram



LinkedIn



YouTube

This brochure was published in September 2024.
As all information is subject to change,
please check our website for the latest updates.