

Master of Epidemiology

2025-2026

From theory to
practice, with a
**solid methodological
foundation**



University
of Antwerp

| Let's shape the future

Table of contents

In brief	04
In detail	05
Programme structure	07
Job opportunities	10
Why choose UAntwerp	11
Testimonial	13
Admission criteria	16
Application procedure	18
ECTS credits	19





This programme helps me to be more independent and build my own pathway as a future epidemiologist.



In brief

Learn from experts and engage in international classrooms in the Master of Epidemiology. In this two-year programme, you will gain knowledge, skills and competencies to design and conduct epidemiological research. You will learn to translate results into practice and policy to improve the health of people and populations.

In detail

— **What makes people sick?** Certain genes?
Certain behaviour? Other determinants?

— How do we best **diagnose** diseases? What is the
prognosis of a disease? What improves or worsens the
prognosis?

— How **effective** are interventions in daily practice?

As an epidemiologist you learn to formulate an answer to these questions. You identify the best-suited study design in order to achieve the most accurate and least biased answer that is scientifically correct.

Epidemiologists are indispensable

Epidemiology studies disease occurrence and health states in diverse populations, and is the core science in the field of public health. Epidemiologists have become **indispensable** in:

— **the design**, performance and analysis of applied
medical scientific research

— **the application** of medical scientific knowledge in the
development of public health policy

Apply for a VLIR-UOS scholarship!

Thanks to the support from VLIR-UOS, students from selected countries in Africa, Asia and Latin America can apply for a **full scholarship** to follow a Master's programme at a Flemish university. We provide 10 full scholarships for the Master of Epidemiology.

The VLIR-UOS scholarship **includes** an air ticket, visa costs (subject to approval) and a monthly allowance to cover living expenses, accommodation, the course fee and insurance.



Programme structure

Mix of theory and practice

During the **first year** of the Master's programme, the focus is on deepening your knowledge in the field of epidemiology, statistics and research methods. You will also become acquainted with the practice by attending seminars and workplace visits.

In the **second year** you will focus mainly on your own research for your Master's thesis. You will get to know the different fields of epidemiology, like infectious disease epidemiology, clinical epidemiology and environmental epidemiology. You will expand your methodological knowledge in the course Advanced Methods in Epidemiology and learn how to convert theory into practice in the course Public Health, Policy and Practice.

Strong in qualitative research

Qualitative research can be used to place or explain the results of quantitative studies in context or to generate hypotheses that can then be tested by quantitative epidemiological studies.

Full-time or part-time

This English-taught programme covers 120 credits, corresponding to 2 years of full-time study. For working students, there is a part-time programme of 30 credits per year. This way working students can complete the Master's programme in 4 years. Important: if you need a student visa to study in Belgium, you are required to follow a full-time programme and take a minimum of 54 credits per academic year.



During lectures there is an active participation from the students who can freely exchange their ideas and doubts with the professors.

Linda, Peru

An international experience

This Master's programme welcomes students from all over the world. All classes are taught in English and international epidemiologists are invited on a regular basis to give seminars. This programme is an international experience right from the start.

You will have the opportunity to gain and improve your epidemiological skills by doing part of your Master's thesis abroad. Our professors have a large international network, but you can also suggest a professional epidemiological institution or public health organisation abroad yourself.



Curriculum

Year 1

Compulsory courses	ECTS credits 60
Classic and Modern Methods of Epidemiology	12
Data Management and Statistical Software	6
Introduction to Statistics	3
Research project part 1	6
Classic and Modern Methods of Data Analysis	9
Metrics: Exposure and Outcome Assessment	3
Research Project part 2	6
Workplace Visits	3
Introduction to Qualitative Research	3
Genetic Epidemiology	3
Applied Research Methods	3
Seminars in Epidemiology 1	3

Year 2

Compulsory courses	ECTS credits 60
Public Health, Policy and Practice	9
Epidemiology of Infectious Diseases	6
Clinical Epidemiology	6
Epidemiology of Non-Communicable Diseases and Mental Health	3
Master's thesis 1: Data Collection and Management	6
Seminars in Epidemiology 2	3
Advanced Methods in Epidemiology	3
Environmental Epidemiology	3
Master's thesis 2: Analysis and Writing	21

Total

ECTS credits 120

Job opportunities

Epidemiologists are mainly employed in public health, health policy, medical scientific research or education institutes or organisations.

The epidemiologist's field has **greatly expanded** over the last decennia. Whereas epidemiologists mainly used to focus on research in preventative medicine and public health, their methodological expertise is increasingly being called upon nowadays.

The Master of Epidemiology is also a good base if you are interested in participating in clinical, scientific or applied molecular/genetic research in a position as an applied clinical researcher.

Are you interested in research? Then a PhD might be something for you. With a PhD, you can work as a researcher and teacher at the university.

Orientation year

After completing your studies you can choose to look for work opportunities in Belgium. You can apply for an orientation year and extend your stay in Belgium by 12 months. Guidance and administrative assistance with this process is available through the university.

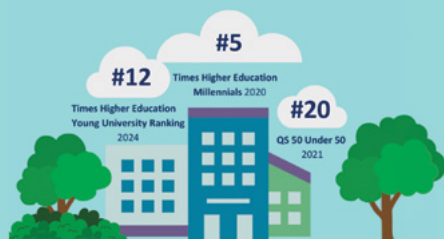
Why choose UAntwerp

Our university is located in the **city of Antwerp**, in the heart of Belgium and Europe. The port of Antwerp is one of the biggest in the world. Antwerp is not just an ancient medieval and baroque city, full of history. It is also a bustling metropolis with a vibrant social scene, impressive architecture and cultural contrasts. Over 170 nationalities live here, more than in New York! This cosmopolitan vibe is also reflected at the University of Antwerp. English is widely spoken in Antwerp, though if you learn Dutch during your stay here you will become a local in no time.

First-rate research and education make the University of Antwerp a wonderful place to study and to work. We foster the nexus between research and education. Internationalisation is key to our mission. It is no coincidence that the University of Antwerp is a partner in a highly promising European university network, the Young Universities for the Future of Europe www.YUFE.eu.

As home away from home to over **20,000 students**, the University of Antwerp prides itself on operating on a human scale. Our faculty and staff will welcome you into top-notch infrastructure on one of our four campuses. While you're here you are also invited to enjoy our vibrant cultural programme, sports facilities and many student services.

The University of Antwerp **scores extremely well** in Young University Rankings



Why study Epidemiology in Antwerp?

Focus on **epidemiological methods**. You will learn how to design studies, measure occurrence and association and assess bias. You will also acquire competencies in statistics.

Link with **public health**. You will learn to identify and propose solutions to health problems in society by conducting epidemiological research.

Translate research into **policy and practice**. You will also gain insight into converting research results into practice and how this can influence policy.

International classrooms. You will join a group of students from all over the world with different backgrounds. This diversity will broaden your view.

Green campus and the **city within reach**. Your classes are held on Campus Drie Eiken. You will receive lectures in large, modern auditoriums and practice your skills in well-equipped practical rooms.

Make-over

Campus Drie Eiken recently underwent **a real make-over**. A tower and a low-rise building with student rooms, a large bicycle parking area, a space for commercial activities, a brand new sports hall and a student restaurant with 400 extra dining places have been constructed. The project was finalised in October 2024 and Campus Drie Eiken now has a **vibrant heart** and is alive 24/7.





Testimonial

The Master of Epidemiology gave me better opportunities to keep pursuing my career.

I am a medical doctor who graduated from the National University of the Peruvian Amazon in 2015 in Iquitos, the capital of the Peruvian Amazon. Before coming to Antwerp, I was working as a clinical coordinator at hospital sites in Iquitos. While conducting and coordinating studies I realised that my knowledge on research was limited. The little knowledge on Epidemiology that I obtained from medical school was not enough to be involved in the research I am interested in. That frustrated me a lot because I always wanted to be part of the whole process of conducting research, not just in the medical field. So, that encouraged me to quit my job and start this new stage of my career.

What were your impressions of the Epidemiology programme?

I found the study programme to be very well organised. During lectures there was active participation from the students and we could freely exchange our ideas and doubts with the professors. The professors encouraged us to be more proactive and work as a team. This has helped me to be more independent to build my own pathway as an epidemiologist.

What did you think of our city?

The first time I came to Antwerp I was impressed by how clean the city is and how beautiful the architecture is. My favourite spot in Antwerp is when I cross the river by boat. From the river you can have a nice view of the city, especially in spring and summer.



The Belgian people that I know have been very kind, respectful and polite to me, but I can see that it is very important to learn Dutch in order to make close Belgian friends. English is not enough for it.

What can you recommend to future epidemiology students?

Do make friends, exercise and if you have the opportunity to learn Dutch, do so. That will help you to get along in every aspect here and it is always nice to learn another language. Belgian people really appreciate it.

**What is your current career,
after graduating from the Master of Epidemiology?**

I am employed at the National Institute of Public Health and the Environment in the Netherlands as a PhD student. My PhD position is linked to Utrecht University. I'm also affiliated at Imperial College London as an honorary research associate where I work mostly on TB-related cost studies.

Linda, Peru

Admission criteria

Prior education requirements

Applicants should hold a **university-level Bachelor's degree**. This degree should be of an **academic nature**, as opposed to a technical or professional degree.

We do not accept students with the following degrees, which we consider to be **technical** or **professional**:

- Bachelor of Agriculture
- Bachelor of Animal Health
- Bachelor of Biotechnology
- Bachelor of Education of Science
- Bachelor of Laboratory Sciences
- Bachelor of Microbiology
- Bachelor of Midwifery
- Bachelor of Nursing
- Bachelor of Nutrition

(This is a non-exhaustive list)



There can be heated debates in class about methodology of a particular research topic. It's normal and constructive.

Mary Ann, Philippines

If you have an additional Master's degree, you are **eligible to apply**.

A degree in Medicine, (Biomedical) Sciences or Public Health gives you a good base for the Master of Epidemiology. However, if you have **another academic background** and feel that you would benefit from more knowledge in epidemiology, statistics and research methods to strengthen your research, you might be the right candidate as well.

Since the programme is taught in **English**, candidates with a prior degree issued outside Belgium, the Netherlands or Luxembourg are required to demonstrate their proficiency in English. They can do so in two ways:

— Either by submitting a **language certificate** showing their TOEFL, IELTS, ITACE or Cambridge English test results (the level required can be checked on www.uantwerpen.be/admission)

— Or by submitting **proof** they have studied at least one academic year (or 60 ECTS credits) in an English-language Bachelor's or Master's programme.

The Board of Admission may still ask for additional proof of proficiency in English.

Students who are still completing their Bachelor's degree are also encouraged to apply. They have to submit an official letter in English from their university confirming that they are expected to finalise their Bachelor's studies at the end of the current academic year. They should also submit up-to-date authenticated transcripts with their results of the previous years.

Application procedure

Candidates with a **Bachelor's** or **Master's degree** from a higher education institution in Belgium, the Netherlands or Luxembourg can enrol directly. Candidates who do not fulfil this condition or who need a visa must submit an online application through the online application tool **Mobility Online**. Applications files for the academic year 2025-2026 can be started in Mobility Online as from early November 2024 onwards.

As a first step, the programme's **Board of Admission** will review their grades, their background in life sciences, research methods, epidemiology and statistics, and their motivation for application.

Application deadlines

To submit an application through Mobility Online

For non-EEA * nationals and for students who need a visa: **before 1 March 2025**

For EEA nationals: **before 1 June 2025**

* **EEA** = European Economic Area

Member states:

Austria, Belgium, Bulgaria, Croatia, Cyprus, Czech Republic, Denmark, Estonia, Finland, France, Germany, Greece, Hungary, Iceland, Ireland, Italy, Latvia, Liechtenstein, Lithuania, Luxemburg, Malta, the Netherlands, Norway, Poland, Portugal, Romania, Slovakia, Slovenia, Spain and Sweden

Enrolment deadline

Early October

Enrolments start on 1 July 2025.

The academic year 2025-2026 starts on Monday 22 September 2025.

ECTS credits

The University of Antwerp applies the '**European Credit Transfer and Accumulation System**' (ECTS) in all its degree programmes.

A full-time one-year study programme amounts to **60 ECTS credits** (30 ECTS credits per semester), which implies a student workload of about 1500 to 1800 hours. One ECTS credit stands for 25 to 30 hours of work including contact hours, preparatory work, study and assessment.



Quick facts

Level

Master

Language

English

Credits

120 ECTS credits

Number of years

2

Tuition fee per year *

EUR 1157 for EEA nationals

EUR 5800 for non-EEA nationals

Campus

Campus Drie Eiken

Faculty

Medicine and Health Sciences

More information

[www.uantwerpen.be/
master-epidemiology](http://www.uantwerpen.be/master-epidemiology)



* subject to yearly revision

Contact

Master of Epidemiology

epidemiology@uantwerp.be

Questions about the VLIR-UOS scholarship?

global.health.institute@uantwerpen.be

International Students Office

internationalstudents@uantwerp.be

T.: +32 3 265 31 89

www.uantwerp.be

Follow us!



Facebook



Instagram



LinkedIn



YouTube

This brochure was published in September 2024.
As all information is subject to change,
please check our website for the latest updates.