

悉尼新南威尔士大学中国学习中心

UNSW Sydney China Learning Centre
at Yixing & Shanghai

Background 项目背景

UNSW Sydney launched its first China Learning Centre (CLC) at the Yixing Industrial Park for Environmental Science and Technology (ES&TP), where UNSW's Centre for Transformational Environmental Technologies (CTET) is located, to support those students who cannot return to the campus in Sydney to continue their studies. From T3 2020 to T3 2021, the Yixing CLC has assisted more than 350 students to take online courses, develop thesis projects and carry out Industrial Training. Despite the opening of the Australian border, the Yixing CLC will remain operate for Summer Term and T1 2022 and offer placements to current undergraduate and postgraduate students from the UNSW Faculty of Engineering and School of Material Science and Engineering.

悉尼新南威尔士大学（UNSW Sydney）在中国宜兴环保科技工业园（ES&TP），即新南威尔士大学（宜兴）环境技术转移中心（CTET）所在地，成立了首个新南威尔士大学学习中心，以支持因新冠疫情旅行禁令而不能返回校园的中国留学生继续学业。在 2020 年第 3 学期至 2021 年第 3 学期，宜兴学习中心共帮助 350 余位学生展开在线学习、论文研究以及企业实习等。尽管澳大利亚边境已经开放，宜兴学习中心还是会于 2022 年夏季学期和第 1 学期继续开放，主要面向学生群体为工程学部以及材料科学与工程学院的在读本科及硕士生。

With the great success of CLC in Yixing, UNSW Sydney is opening a new learning centre in Shanghai to provide support and engagement opportunities for UNSW students who are currently in China due to COVID-19 travel restrictions. CLC in Shanghai is located in Changyang Campus which sits in Yangpu district. Throughout 2021, the Shanghai CLC has assisted more than 400 students to take online courses, to build up connection with industry and receive internship opportunities. CLC will continue to open in T1 2022 for all enrolled students with no restriction on degrees and programs.

宜兴学习中心的成功开展，促使悉尼新南威尔士大学在上海新增了一个学习中心，向受到出行限制的中国学生提供学习和社交空间以及支持服务。上海学习中心位于杨浦区的长阳创谷，2021 年三个学期共招收了 400 逾名在校学生并帮助他们展开在线学习、建立行业联系、对接企业实习等。上海学习中心将于 2022 年第 1 学期继续开放，无课程或学院限制。

Key Dates 关键日期

Date 日期	Format 推送形式	Milestone 关键节点
Monday 27 December 2021 2021 年 12 月 27 日, 星期一	WeChat article + EDM 微信文章及群发邮件	invite for registration 注册开启
Friday 7 January 2022 2022 年 1 月 7 日, 星期五	WeChat notification + EDM 微信通知及群发邮件	Reminder - call for registration 注册提醒
Wednesday 12 January 2022 2022 年 1 月 12 日, 星期三	WeChat notification 微信通知	Announcement - close registration 注册通道关闭
Wednesday 1 January 2022 2022 年 1 月 14 日, 星期五	WeChat notification 微信通知	Announcement - offers are sent out 录取通知发放
Monday 14 February 2022 2022 年 2 月 14 日, 星期一		First day at Yixing & Shanghai Centres 正式开学

Key benefits to students 学生收获

- An option to undertake online lectures in English provided by UNSW academic staff together with peers in a physical study room at CLC (subject to Chinese public health guidelines on COVID-19)
- Access to educational resources from CLC including open discussion space, seminar room, and study room
- Opportunity to engage with current students, alumni, industry partners, faculty members and gain access to a great range of student support services through a dedicated support program
- Opportunity to attend Alumni Talk, Career Workshop, Master Class and other events
- Opportunity to attend entrepreneurial activities organised by Changyang Campus (Shanghai Centre only)
- Group learning activities in English for selected disciplines in a physical space facilitated by UNSW trained staff from CTET (Yixing Centre only)
- Facilitation of industrial training (IT), including providing recruitment information of selected UNSW nominated IT host organisations (Yixing Centre only)
- Facilitation of research projects with joint supervision by a Sydney-based UNSW academic and CTET research staff (Yixing Centre only)
- Opportunities for attendance at research forums organised by CTET which provides access to scientific information as well as networking opportunities with industry/potential employers (Yixing Centre only)

学生将得到以下一系列的指导和支持支持, 包括:

- 可以选择在学习中心的教室里与同学们一起接受 UNSW 教学人员提供的在线课程 (需遵守中国新冠疫情公共健康政策);
- 可以使用学习中心的教学资源, 包括公共讨论区、会议室以及自习室等;
- 有机会与在校生、校友、行业合作伙伴、教职员工取得联系, 获得相应的支持服务;
- 有机会参加各类活动, 包括校友分享、职业发展主题活动、大师课等;
- 有机会接触到长阳创谷举办的各种创业活动 (仅限上海学习中心);
- 部分学科学生可在 CTET 经过培训的员工帮助下, 进行全英文小组学习活动 (仅限宜兴学习中心);
- 支持学生企业实习, 包括向学生提供 UNSW 指定的实习机构的招聘信息 (仅限宜兴学习中心);
- 在 UNSW 和 CTET 研究人员的联合监督下, 协助学生开展研究项目 (仅限宜兴学习中心);
- 出席由 CTET 主办的论坛, 近距离接触科学资讯, 并获得与企业界 (潜在雇主) 建立联系的机会 (仅限宜兴学习中心)。

Introduction of the Learning Centre at Yixing 宜兴学习中心介绍

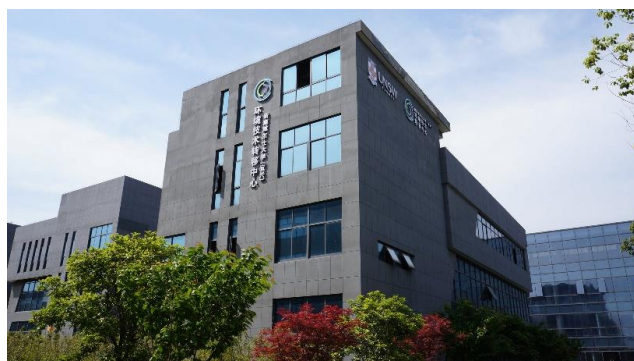
Yixing is an economically prosperous industrial and commercial city located in Jiangsu Province. In 2020, it ranked 11th on the list of the top 100 counties in China. Yixing is also situated in an area of great natural beauty. It offers a rich cultural history - with more than 7000 years history of pottery handicraft, Yixing is famous for its Zisha teapot. It is also the hometown of a large number of academicians and university presidents and professors, which makes it a distinguished historical and cultural city. ES&TP is a unique National Hi-Tech Industrial Development Zone focused on developing the environmental protection industry in Yixing. It is a modern industrial park which integrates R&D, manufacturing, engineering, construction and operations services. In December 2017, UNSW and ES&TP jointly established the Centre for Transformational Environmental Technologies (CTET) focusing on the development and commercialisation of innovative environmental technologies.

宜兴市位于江苏省，是一座经济发达的工商业城市。2020 年，宜兴在全国百强县中排名第 11 位。宜兴也是一座生态城市，风景秀丽，生态禀赋独特。其制陶工艺有着 7000 多年的历史，独特的紫砂壶驰名中外。同时，宜兴培养了一大批院士、大学校长和教授，是一座杰出的历史文化名城。中国宜兴环保科技工业园是中国唯一以环保产业为主的国家级高新技术产业开发区，也是一所集研发、制造、工程、建设、运营服务为一体的现代化工业园区。2017 年 12 月，新南威尔士大学与中国宜兴环保科技工业园联合成立了新南威尔士大学（宜兴）环境技术孵化中心，专注于创新环保技术的开发和商业化。



CTET is an R&D Centre established in December 2017, focusing on the development and commercialisation of innovative environmental technologies. Co-funded by UNSW Sydney and the Yixing Industrial Park for Environmental Science and Technology (ES&TP), the Centre is located in the Jiangsu Innovation Centre of Industrial Technology for Environmental Protection Equipment in Yixing, Wuxi, Jiangsu, China. CTET was established as a flagship joint venture under the [Torch Innovation Precinct at UNSW](#).

CTET 成立于 2017 年 12 月，是一所专注于创新环保技术的开发和商业化的研发中心。该中心由 UNSW 和 ES&TP 共同出资，地处江苏省无锡宜兴市的环保装备产业技术创新中心内，是新南威尔士大学火炬创新园区框架下的首个旗舰型合资公司项目。



CTET currently has more than 20 staff with a variety of expertise in different areas of environmental technologies including water, air and soil. CTET is led by the Executive Chairman, Professor [David Waite](#) from the UNSW School of Civil & Environmental Engineering. CTET is in partnership with a wide range of industries in China including the China Academy of Sciences, Goldwind Environmental Protection, Beijing Origin Water, China Coal Technology Engineering Group, Jiangsu Academy of Environmental Science and Suez.

CTET 目前有 20 多名员工，在水、空气和土壤等多个环境技术领域具有强大的专业知识背景。新南威尔士大学土木与环境工程学院的 David Waite 教授担任中心董事长，带领团队与中国多个行业伙伴建立了合作关系，包括中国科学院、金风环保、北京碧水源、中煤科工集团、江苏省环境科学研究院和苏伊士水务等。

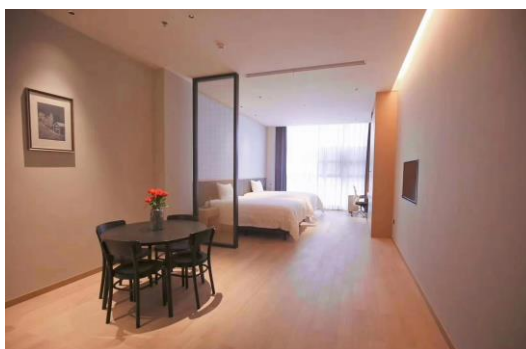
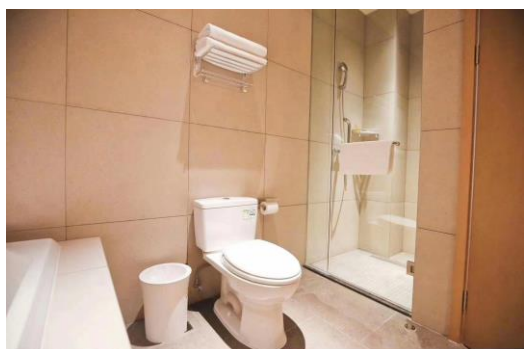
Accommodation Options 住宿选择

Four locations in Yixing are recommended for the new term.

学习中心为大家提供一下四个住宿的选择。

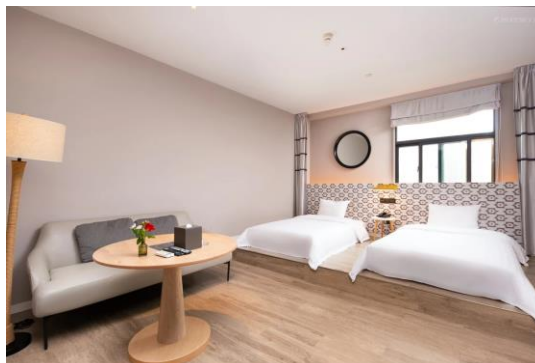
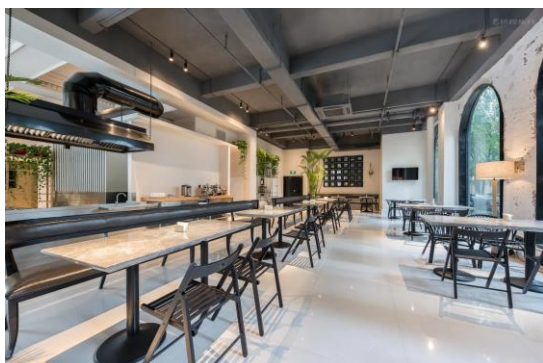
Option 1 is the JC Self-service Apartment (JC Apartment) which is located on a busy street near Tuan Lake. In the JC Apartment, each room is equipped with a washing machine, cooking facilities and a study zone. In addition, a fitness room and onsite parking is available. Please contact Ms Zhang 13357909777 for reservation.

选择一是环科园内的杰希自助式公寓，该公寓/酒店地处繁华街区，毗邻团洳。杰希公寓每个房间都配有洗衣机、小型厨房和学习区域。另外还提供健身房和停车位。请联系张女士 13357909777 进行预订。



Option 2 is the JC Hotel (Xincheng Branch) that is located 100m away from the JC Apartment. You can find the details from the link [杰希精品酒店\(宜兴新城路店\)预订价格,联系电话位置地址【携程酒店】\(ctrip.com\)](#). Breakfast and daily housekeeping will be provided.

选项二是位于杰希公寓对面 100m 的杰希酒店，酒店的具体信息及联系方式请见携程网链接[杰希精品酒店\(宜兴新城路店\)预订价格,联系电话位置地址【携程酒店】\(ctrip.com\)](#)。酒店每日会提供早餐及房间清理服务。



Option 3 are non-commercial one bedroom Apartments that are rented by private landlords. Donglai International Apartment and Zhuoyi Apartment are recommended. You can contact 13812563037 or any other local agents for more details. Below are some example photos.

另外有两处公寓有多个个人出租房源，分别是东来国际及卓易公馆，可以联系本地中介 13812563037 或其他任何渠道进行了解并预定。以下为其中一处房源照片，仅供参考。



Option 4. You have the option to look for accommodation in Yixing by yourself. As we will arrange a shuttle bus passing through the four accommodation venues above, it will be more convenient if you can live nearby.

选项四，你也可以自行租房，建议租住在以上四个场所附近，学习中心每个工作日都会安排大巴接送四个住宿点的同学往返学习中心。

The locations of each accommodation and the CLC at CTET are as below.

JC Apartment: No 19 Xincheng Road

JC Hotel: No 34 Xincheng Road

Donglai International Apartment: No 562 Xincheng Road

Zhuoyi Apartment: No 298 Xingye Road

CTET CLC: Building 4, No 128 Hengtong Road

以上提到的四处住宿以及学习中心的详细地址分别为：

杰希公寓：新城路 19 号

杰希酒店（新城路店）：新城路 34 号

东来国际公寓：新城路 562 号

卓易公馆：宜兴市兴业路 298 号

宜兴学习中心：恒通路 128 号 4 号楼



FAQs 常见问题

Eligibility and Fees 申请资格与费用

- **Who will be eligible for the application of enrolment at the Learning Centre?**

All Engineering students and students from the School of Material Science and Engineering are welcome to apply by submission of an EOI. Other students will be considered based on the total number of applications received.

哪些学生可以申请于 UNSW 学习中心进行学习?

所有工程学部及材料环境与工程学院的学生都可通过填写 EOI 表格递交申请。其它学生的申请将根据最终收到的申请数量来确认是否能够接收。

- **Do I need to pay additional tuition fees for enrolment at the Learning Centre?**

You don't need to pay any additional tuition fees to enrol at the Learning Centre. You will need to pay your own food, accommodation, transport, medical and other living expenses, and you will need to continue to pay the normal tuition fees to UNSW.

如果来学习中心就读,我是否需要支付额外的学费?

您不需要支付任何额外的学费,但需自行支付食宿、交通、医疗和其他生活费用,并继续支付 UNSW 的正常学费。

- **Is there any selection process if the number of received applications is more than hosting capacity?**

Yes, priority will be given to students nearing completion of their degree and needing to undertake a research project or industrial training to complete their degree. Consideration will be given to other applicants if places are available.

如收到的登记申请数量超出额定人数,是否会进行甄选程序?

是的。中心将会优先考虑即将毕业的学生,他们需要进行研究项目或企业培训来完成学位。如名额有余,接下来将会考虑其他申请人。

- **For those who have applied for Program Leave in T1 2022 and decided to register for this learning centre, can we rescind our Program Leave to continue?**

Yes. Students who have applied for Program Leave can apply to rescind it if they plan to resume their program in the Learning Centre. Please contact the Faculty of Engineering to apply.

对于 2022 年第一学期申请了休假的同学,如果计划于学习中心继续学业,是否可以撤销之前的休假申请?

可以。如果学生计划于学习中心继续项目开展,可以撤销之前的休假申请,请联系工程学院的负责部门进行申请。

Registration and Enrolment 登记与入学

- **Will the Learning Centre timetable be consistent with UNSW academic calendar?**

Yes. The Learning Centre will follow a timetable that is consistent with the academic calendar of UNSW Sydney.

学习中心的时间表是否与 UNSW 校历一致?

是的。学习中心的时间表将与 UNSW 的校历一致。

- **Who will be providing the day-to-day support in the Learning Centre for student management and course coordination?**

Administrative support will be provided by CTET and the Learning Centre staff who will look after local enrolment, use of facilities, and maintenance of a register of industry placement for both industrial training and research projects (thesis).

谁将在学习中心为学生管理和课程协调提供日常支持?

CTET 和学习中心的工作人员将提供行政管理支持，包括办理本地入学、设施使用、学生住宿分配，以及学生企业培训和研究项目（论文）合作企业目录的创建与维护。

- **How do I register to attend the Learning Centre?**

The application website will be open from 27 December 2021. Students can complete their EOI information on the website. A confirmation letter will be sent to successful applicants from Thursday 13 January 2022. After that, students need to complete the payment of deposit to finally secure the position. The deposit will be returned when students arrive at CLC.

我怎样才能注册锁定学习中心的位置？

申请网页入口将于 2021 年 12 月 27 日正式开启，学生可通过网页递交自己的申请意愿。2022 年 1 月 13 日起，申请成功的学生将收到确认信。随后，可进行押金缴费以最终锁定位置。押金将于学生抵达学习中心后退回。

- **Will there be an orientation at the Learning Centre?**

Yes, a local orientation for enrolled students will be held at CTET.

学习中心是否有入学迎新指导？

是的。宜兴学习中心将于开学第一周举行迎新活动。

- **Can I pay a visit to the Learning Centre before registration?**

Yes, please send an email to ctet@unsw.edu.au to make an appointment.

开学前我是否可以前往学习中心进行参观？

可以。学生请提前发送邮件至 ctet@unsw.edu.au 进行预约。

- **What documents do I need to bring for registration?**

Please make sure you bring your UNSW student card and identification card.

开学注册登记时我需要携带哪些材料？

请确保随身携带您的 UNSW 学生卡及身份证。

Food and Accommodation 饮食与住宿

- **Is bed linen provided in the accommodation places?**

All beds in JC Apartment/hotel will be provided with standard bed linen. Student who choose Zhuoyi Apartment and Donglai International Apartment need to bring their own beddings.

住宿地点是否提供床上用品？

杰希公寓/酒店提供所有床上用品，卓易公馆及东来国际则需要自行携带床上用品。

- **What if I want to rent another accommodation rather than the four recommended places?**

It is OK. Please inform the CLC staff of your address.

除了以上四处推荐的住宿，是否可以自行在其他地方租房？

可以，请确认住址后及时通知学习中心工作人员。

- **Is a food court available at/near the Learning Centre?**

A canteen located behind the Learning Centre provides lunch from 11:00-11:30 on working days.

学习中心附近有餐厅吗？

学习中心旁边有园区食堂于工作日 11:00-11:30 提供午餐。

学习环境 Study at CTET

- **Can I have a study room for independent learning and group discussion?**

Yes. Students can use the study rooms at CTET for learning and discussion for free.

我是否可以使用自习室进行独立学习与小组讨论？

是的。CTET 的自习室可免费提供给学生开展学习与小组讨论。

- **If I want to terminate my study experience in UNSW Learning Centre in China, what can I do?**

If you wish to terminate your enrolment in UNSW Learning Centre, you need to give a written notice to the Learning Centre via email at least 5 working days in advance.

如果我需要终止在学习中心的学习，应该怎么做？

如果您需要终止在学习中心的学习计划，请至少提前 5 个工作日通过邮件书面通知学习中心的工作人员。

- **Can the Internet in the Learning Centre access VPN?**

Yes. The Learning Centre has installed Australia network system to facilitate students' online courses.

学习中心的网络是否可以使用 VPN?

是的。学生可在学习中心使用 UNSW 提供的 VPN。

Course and Project 课程与项目

- **Is it compulsory to attend the Learning Centre to complete my online courses?**

No. You don't have to attend the Learning Centre to complete your online courses.

是否必须参加学习中心才能完成我的在线课程？

不是。参加学习中心并不是完成在线课程的必需要求。

- **Will the Learning Centre provide assistance in relation to my thesis project?**

Yes. The staff from the Learning Centre will provide assistance in relation to thesis project coordination, including negotiation with local industries or research institutes for project topics, coordination with UNSW academic supervisors and local support from UNSW graduates based at CTET over the duration of the research project or industrial training. Of course, students will still need to meet UNSW's academic expectations in completing their projects.

学习中心是否会为我的论文项目提供帮助？

是的。学习中心的工作人员将提供论文项目协调方面的帮助，包括与当地产业或研究机构就项目主题进行确定以及与 UNSW 的学术导师进行协调。并且，于 CTET 工作的 UNSW 毕业生也会在研究项目或企业培训期间提供在地支持。当然，您需要达到 UNSW 学术导师的要求才可以完成您的论文项目。

- **How will the group activities be arranged?**

Students may initiate group learning activities with these activities facilitated by CTET staff if such activities are considered of value.

课后小组学习将如何安排？

如果学生认为小组学习活动有价值，可在 CTET 员工的协助下发起小组学习活动。

- **Will I get assistance finding training opportunities near the Learning Centre?**

Yes. The Learning Centre will help to connect students with local industries engaged with UNSW and will assist in further coordination.

我是否会获得寻找培训机会方面的协助？

是的。学习中心会根据学生需要帮助其与学校指定实习企业进行对接，并协助后续协调。

- **What is the protocol for undertaking my project at the Learning Centre?**

Immediately after the commencement of T1, CTET will coordinate the projects between students, UNSW and local industries based on the following procedures.

1. Submit your Express of Interest (EOI) on preferred disciplinary area during application;
2. Work with CTET and Learning Centre staff and meet with a local industry in Yixing in relation to your preferred area;
3. Discuss a potential thesis topic together with the local industry and a CTET staff member;

4. CTET staff and the UNSW Staff (the Torch Team) will help identify an academic supervisor at UNSW;
5. CTET organise three-way meetings between local industry, UNSW supervisor and you to discuss thesis topic;
6. CTET assign an external supervisor (from industry, research institute) who will jointly supervise your project together with UNSW academic;
7. CTET assign mentor (if necessary) to facilitate communication between external supervisor and UNSW supervisor; and
8. Return all required forms to UNSW

在学习中心进行研究项目的流程是怎样的？

1. 学生在递交入学申请表格时填写感兴趣的学科或研究方向；
2. 与 CTET 和学习中心的员工一同会见与学生兴趣方向对口的宜兴当地企业；
3. 学生与 CTET 员工和当地企业共同商定一个可能的论文主题；
4. CTET 员工和 UNSW 火炬团队帮助学生确认对应的 UNSW 学术导师；
5. CTET 组织当地企业、UNSW 导师与学生之间进行三方会议，就论文主题展开讨论；
6. CTET 委派一名来自企业或研究机构的外部导师与 UNSW 导师共同指导学生的项目；
7. 如有必要的话，CTET 将分指导员以促进外部导师和 UNSW 导师之间的沟通；
8. 完成 UNSW 所需表格并递交。

• **If I have finished my IT, can I apply for intern to further expand my industrial experiences?**

Yes. You can do another internship at the Learning Centre.

我目前已经完成了企业实习，是否可以再次申请实习，以丰富自己的企业工作经验？

可以。您可以再次申请实习。

• **If I start my research thesis project in the Learning Centre, how can I continue the project if the Australian boarder was open next term?**

The Learning Centre will help students to find a UNSW supervisor for their project. Students can continue their projects and complete any remaining components with their supervisor if they are able to return to UNSW campus.

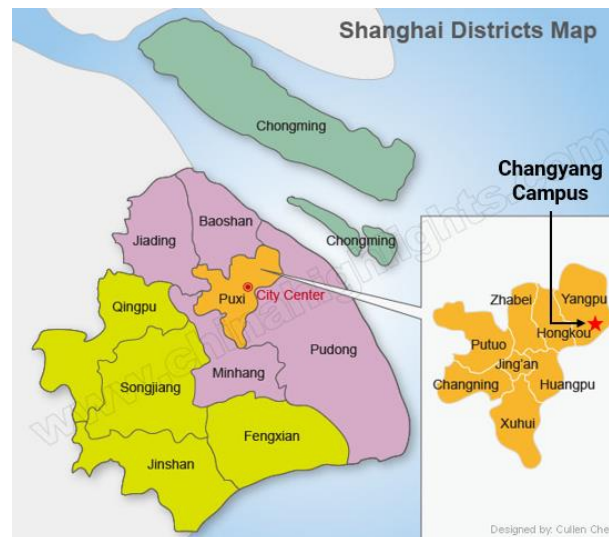
如果学生于学习中心开始了研究项目，澳洲边境开放回到校园后学生将如何继续？

学习中心的工作人员将会为学生联系 UNSW 的学术导师，以指导项目进行。如果学生回到 UNSW 继续学习，学术导师也会继续指导学生直至项目完成。

Introduction of the Learning Centre at Shanghai 上海学习中心介绍

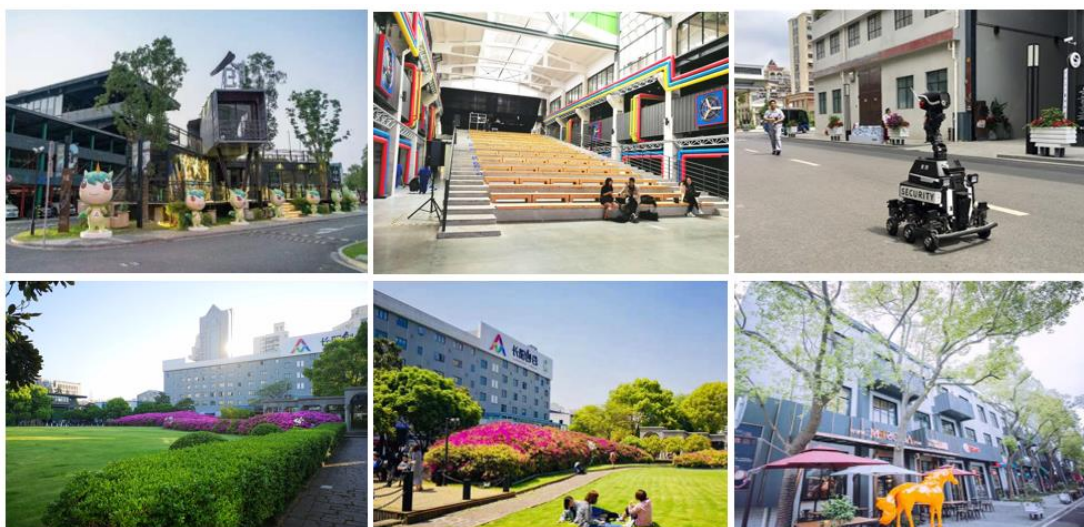
Changyang Campus sits in Yangpu district, which is located in the northeast of downtown Shanghai. Yangpu District has gathered more than 60 maker spaces and over 20 Science Parks. There are 10 famous universities and over 100 scientific research institutions in Yangpu district. As a well-known innovative industry park in Shanghai, there are plenty of listed companies and Unicorn enterprises in the Campus.

上海学习中心位于杨浦区的长阳创谷。杨浦区位于上海市中心区域，不仅聚集了 60 多家创客空间和 20 多个科技园区，还有 10 所著名大学和一百多家科研机构。作为一个享誉上海的创新产业园区，园区内有众多上市公司和独角兽企业。



There are more than 10,000 sqm of beautiful lawn and orchard in Changyang Campus. The construction and design focus on sustainability and environment, thus, it brings natural lighting and fresh air into buildings to create a comforting and friendly space like university campus overseas. Restaurants featured in Western and Asian cuisine, grocery stores, gym, bookstore and printing service are all within walking distance to bring a convenient and dynamic life to students.

虽说是创业园区，园内有超过一万平方米的草坪和果园。建筑设计中充分考虑到环境的可持续性，将清新空气、自然阳光引入建筑物内，创造亲切舒适、类似国外大学校园的空间体验。西式餐厅、亚洲美食、便利店、健身房、书店和印刷服务都步行范围以内，为学生带来了便利而充满活力的生活。



Shanghai Learning Centre provides a comforting learning environment with its cozy design featured in UNSW and rich natural lighting. It has different functional spaces for individual studies, group discussion and events. All space is equipped with high-speed internet and air-conditioning.

上海学习中心的设计亲和、简约且具有 UNSW 特色，自然采光充足，能够为学生们提供舒适的学习环境。不同功能的空间可以满足各类学习需求，比如个人学习、小组讨论以及线下活动，且都配备高速网络和空调。



FAQs for Learning Centre at Shanghai

Eligibility and Fees 申请资格与费用

- **Who will be eligible for the application of enrolment at the Shanghai Learning Centre?**
Students above 18 years old who have enrolled for T1 2022 and are able to organise accommodation on their own in Shanghai are welcome to apply by submission of their EOIs. No restriction for degrees or programs.
哪些学生可以在 UNSW 上海学习中心进行学习？
该学习中心向所有年满 18 周岁、能自行安排并支付在上海的住宿并且已注册 2022 年第一学期课程的学生开放。无学位或学院限制。
- **Do I need to pay additional tuition fees for enrolment at the Shanghai Learning Centre?**
You don't need to pay any additional tuition fees to enroll at the Shanghai Learning Centre. You will need to organize and pay for your own food, accommodation, transport, medical and other living expenses, and you will need to continue to pay the normal tuition fees to UNSW.
如果来 UNSW 上海学习中心就读，我是否需要支付额外的学费？
您不需要支付任何额外的学费，但需自行支付食宿、交通、医疗和其他生活费用，并继续支付 UNSW 的正常学费。
- **How do I book a seat at Shanghai Learning Centre?**
Only accepted students will have the access to our booking system. Before coming to the Shanghai Learning Centre, please make sure you have successfully reserved a seat for the day and scan the QR code by the student ambassador to record the attendance.
我该如何预定上海学习中心的学习座位呢？

被 UNSW 上海学习中心录取的同学方可使用我们的预订系统。来上海学习中心之前，请确保已成功预定当天的学习座位，并当场由学生管理员核销二维码，视作当日出勤。

- **Is there any selection process if the number of received applications was more than hosting capacity?**

Yes. The applicants will be selected according to the requirements from the University.

如收到的登记申请数量超出额定人数，是否会进行甄选程序？

是的。如果受到的登记申请数量超出额定人数，中心将按照学校要求进行筛选。

Food and Accommodation 饮食与住宿

- **Will accommodation be provided in or near the Shanghai Learning Centre?**

No. You need to organize your own accommodation. No recommendation will be provided either.

UNSW 上海学习中心会于校园内或附近提供住宿吗？

不会。您需要自己解决住宿。我们将不提供推荐和建议。

- **Is a food court available at/near the Shanghai Learning Centre?**

Yes, there are quite a few restaurants and café near the Shanghai Learning Centre within walking distance.

UNSW 上海学习中心附近有饮食区吗？

是的，在步行范围内有许多餐厅和咖啡厅。

- **Can I eat in the Shanghai Learning Centre?**

No. Eating is not allowed in the Shanghai Learning Centre. Please keep the space tidy and clean.

可以在 **UNSW 上海学习中心** 进食吗？

不可以。学习中心禁止饮食，请保持学习环境的整洁。

Registration and Enrolment 登记与入学

- **Will the Shanghai Learning Centre timetable be consistent with UNSW academic calendar?**

The Shanghai Learning Centre will commence on Monday 14th February 2022 and open till 12th May 2022.

UNSW 上海学习中心将于 2022 年 2 月 14 日（星期一）开始，至 5 月 12 日结束。

- **Who will be providing the day-to-day support in the Shanghai Learning Centre for student management and course coordination?**

Administrative support will be provided by UNSW China Centre and Student Ambassador.

谁将在 **UNSW 上海学习中心** 为学生管理和课程协调提供日常支持？

悉尼新南威尔士大学中国中心的工作人员和学生管理员将提供行政管理支持。

- **How do I register to attend the Shanghai Learning Centre?**

The application will be open from 27th December 2021. Students can fill their EOI information on the website. And the confirmation letter will be sent to successful applicants from 13th January 2022. The booking system will launch on 11th February 2022.

我怎样才能注册锁定 **UNSW 上海学习中心** 的位置？

申请通道将于 2021 年 12 月 27 日正式开启，学生通过网页递交自己的申请意愿。2022 年 1 月 13 日，申请成功的学生将陆续收到学校的确认信。座位预定系统将于 2022 年 2 月 11 日开放预定。

In response to COVID-19

- **In response to COVID-19, what documents do I need to bring when I check in?**

The Ministry of Education and the National Health Commission recently issued a guideline on COVID-19 control and prevention. Students entering the Centre should have their body temperature checked and their health code scanned. Student will need to carry medical face masks. The Centre

will keep students updated with the newest policy.

根据新冠肺炎疫情防控政策，入学登记时我应该做好哪些准备？

根据中国国家教育部和国家卫生健康委员会的最新指导意见，进入 UNSW 上海学习中心的学生应进行体温检查和健康码扫描。学生需要携带医用口罩。开学前最新的防控政策将会为学生随时进行更新。