



Progress for all starts with you

Acknowledgement of Country

UNSW respectfully acknowledges the Bidjigal, Biripai, Dharug, Gadigal, Gumbaynggirr, Ngunnawal and Wiradjuri peoples, on whose unceded lands we are privileged to learn, teach and work. We honour the Elders of these Nations, past and present, and recognise the broader Nations with whom we walk together. UNSW acknowledges the enduring connection of Aboriginal and Torres Strait Islander peoples to culture, community and Country.



Progress for all starts with you

The world faces monumental challenges. It always has. But if you look around, progress is everywhere. People are coming together, creating a better future. From advances in climate science and sustainable cities to improvements in public health and human rights, the progress we make together can improve people's lives worldwide.

You may not know what, how or why yet, but your unique potential, interests and drive will be the key to unlocking solutions to real issues. Our academics will guide you as you build on your strengths and identify opportunities that will shape your interests into a fulfilling career.

Discover the progress you can make with UNSW Sydney.



Global top 20 university

Ranked in the world's top 20 for three consecutive years

QS World University Rankings, 2024–2026



A Go8 university

A member of Australia's Group of Eight (Go8), a prestigious coalition of research-intensive universities



Most employable graduates

Ranked #1 in Australia and #32 globally for employment outcomes

QS World University Rankings, 2026



Highest graduate salaries

Highest median graduate salaries of Go8 universities

QILT Graduate Outcomes Survey (medium-term), 2024



> Find out more

Your guide goes beyond these pages. Find videos, articles, events and more at unsw.to/international-student.

Join Australia's most employable graduates

Shape the future you want



Australia's #1 university for employment and career outcomes

QS World University Rankings, 2024–2026
Australian Financial Review Best Universities Ranking, 2025



Most employable students for seven years in a row

Australian Financial Review Top100 Future Leaders & Graduate Employers Awards, 2020–2026



Highest median graduate salaries of Go8 universities

QILT Graduate Outcomes Survey (medium-term), 2024

At UNSW, we take pride in our graduates and have a strong reputation among global employers. Our students are consistently recognised among Australia's top achievers for their outstanding employment success and meaningful impact on society.*

By joining Australia's most employable graduates[^], you will develop work-ready skills and meaningful connections with industry professionals. That is why many of our graduates are employed by top global organisations, such as Baker McKenzie, Cisco, Deloitte, Ernst & Young, Google, JPMorganChase, Meta, Microsoft, NASA, NVIDIA, PwC, Siemens, Tata Group, TikTok and UNESCO.

*QS World University Rankings, 2026

[^]Australian Financial Review Top100 Future Leaders & Graduate Employers Awards, 2020–2026



UNSW facilitated a few of my initial internships, providing a solid foundation for me to develop my skill set and go out and find more internships.

—
Holly Lin

UNSW Business graduate
Product Growth Manager at Canva

UNSW Employability programs will equip you with the skills and experiences employers value. Our Discover, Launch, Grow roadmap will help shape your future through career coaching, industry experience, professional development programs and more.



Start your global career in Sydney

Unlock numerous career opportunities in Australia's business and technology capital with a post-study work visa. This visa allows you to work full time in Australia for two to four years[^] upon completing eligible university studies.



Be job-ready with internships and placements

Boost your employability by working directly with industry and community partners on real-world projects. Through Work Integrated Learning (WIL) activities, like internships and placements, you will apply your learning, gain degree credits and build essential career skills.

Visit wil.unsw.edu.au



Launch your startup

If you are passionate about starting your own business, UNSW is the place for you, as it is widely recognised as Australia's most entrepreneurial university. UNSW Founders is one of the biggest student and alumni startup programs in Australia.* It offers workshops, accelerators and mentoring to equip you with the entrepreneurial skills to succeed in a rapidly evolving career landscape.

Visit unswfounders.com



Gain a competitive edge

Exclusively for international students, the Professional Development Program offers workshops and work experience opportunities to prepare you for the global workforce.

Visit unsw.to/pdp



Access faculty career support

Each faculty at UNSW has initiatives, support services and programs that aim to enhance your employability.



Build connections beyond graduation

Connect with our alumni network, which spans more than 140 countries. Be mentored, inspired and supported by industry leaders who value progress for all. This global network will support you throughout your degree and unlock doors after you graduate.

Meet our alumni at unsw.to/our-alumni



➤ Find out more about employability at UNSW at unsw.edu.au/employability

[^]Subject to Australian Department of Home Affairs visa policy change. For visa eligibility and application requirements, visit homeaffairs.gov.au

*Top Entrepreneurial Universities, The Australian, 2023

Scholarships that reward your ambition

Join a global community of ambitious, high-achieving students with a scholarship that provides financial support while giving you a competitive edge with future employers.

Our commitment goes beyond grades. We recognise your unique strengths and reward your leadership skills, extracurricular interests and passion to study with us.

International Scientia Coursework Scholarship

Rewarding students for academic achievement, leadership skills and extracurricular interests, this scholarship offers up to 100% tuition fee coverage or \$A20,000 per annum for tuition fees for the minimum duration of your program.

Australia's Global University Award

This scholarship is valued at \$A10,000 and is based on academic achievement.

International Student Award

Students from eligible countries and programs may receive a 20% contribution to their tuition fees for every year of their program.

UNSW College Award

This award is for students with strong academic performance who complete the UNSW College Foundation Studies program.

➤ View additional scholarship options, eligibility criteria and key dates at scholarships.unsw.edu.au



The scholarship opened many doors for me to explore diverse cultures, interact with peers from various backgrounds and get myself out of my comfort zone.

—
Evellyn Kumala Wijaya
UNSW International Scientia Coursework Scholarship recipient

Pathways to your dream degree

UNSW College offers packaged pathway programs that will prepare you for academic success in your preferred UNSW degree.

You will gain the academic knowledge and English language skills needed to meet the entry requirements for your dream degree. You will also receive support from our expert staff, so you can progress to UNSW with confidence.

Diplomas

Learn the same content as first-year UNSW Sydney students in this 12-month program. You will progress directly to the second year of a UNSW bachelor's degree in Architecture, Business, Computer Science, Engineering, Media and Communications or Science.

Foundation Studies

Your pathway to the first year of any UNSW degree. UNSW College offers a range of programs that are designed to build the skills you need to succeed at university. Programs range from four to 12 months, depending on your academic level and English skills.

Academic English

Build your English skills for entry into Diploma, Foundation Studies or Pre-Masters programs, or undertake this course prior to starting your chosen UNSW degree.

Pre-Masters Program

Enhance your skills in critical thinking, academic writing, project management, research and communication to succeed in the future. Progress to a master's degree in Art and Design, Engineering, Engineering Science, Information Technology or Media at UNSW with a 15-week Pre-Masters Program.

➤ Find a path to your desired degree at unswcollege.edu.au

UNSW Global Pty Limited ABN 62 086 418 582 trading as UNSW College™. UNSW College delivers its Foundation Studies, Academic English, Diplomas, and Pre-Masters Program under CRICOS Provider Code 01020K; TEQSA Provider ID: PRV13020 (Institute of Higher Education). See unswcollege.edu.au/esos for more information. © 2026 UNSW Global Pty Limited.





5th most desired
place to live and study in
the world

QS Best Student Cities
(Desirability), 2026



6th safest
city in the world

Berkshire Hathaway Travel
Protection, 2025



6th most liveable
city in the world

The Economist Intelligence Unit's
Global Liveability Index, 2025

Life in Sydney

Studying abroad is not just about what you learn in the classroom. Make the most of Sydney's vibrant lifestyle, join a club or society, make friends through campus accommodation, and access the support you need to excel in all aspects of life at UNSW.

➤ Discover more at unsw.to/study-in-australia

Feel welcome from day one

We help you settle into Sydney immediately by connecting you with a cultural mentor and providing a free airport pickup service.

Live in the heart of everything

UNSW's main campus is located in Kensington, a friendly, multicultural inner-city suburb. Ideally located between the beach and the city, it gives you access to the best of what Sydney has to offer.

Travel to Sydney city by light rail in just 20 minutes, or visit beautiful Coogee Beach – it's just eight minutes away by bus.

There are a variety of restaurants, shops, healthcare services and other amenities around the campus that will meet your everyday needs.



Vivid Sydney Light Festival

© Destination NSW



I always wanted to come to Sydney – the weather, the beaches and the people all felt so inviting. My parents encouraged me to study abroad and living here has been everything I hoped for.

–

Anise Wong

Bachelor of Exercise Science/Master of
Physiotherapy and Exercise Physiology

Get the support you need

Our International Student Welcome Centre and student support services are here to guide you through university. For your studies, there are Academic Skills resources, Peer-Assisted Study Sessions (PASS) and myEnglish Week, which provide free consultations, study groups and workshops to help with writing, exams and academic English.

To help you thrive personally, our Psychology and Wellness team offers confidential counselling. Our Equitable Learning Services (ELS) team also offers free, confidential support for students with disabilities, health conditions or carer responsibilities.

Find out more at unsw.to/support

Find your new home

Make yourself at home with our range of award-winning living spaces, located on and off campus.

Residential colleges provide a truly inclusive and supportive community with academic and wellbeing support, while apartments afford greater independence.

UNSW-operated accommodation prices include Wi-Fi and utility bills. Many options include room-cleaning services, support staff and catered meals to suit various dietary needs. Find your home at unsw.to/accommodation.

Our off-campus accommodation support team can guide you in finding safe and conveniently located off-campus housing options. Book an appointment at unsw.to/ocas.

Feel inspired in a safe and vibrant city

As Australia's hub for education, business and culture, Sydney is known for being an inclusive and open-minded city. Here, you will be inspired by people from all walks of life and join a community of more than 120 nationalities.

From world-class sporting events and pristine beaches to art exhibitions and year-round cultural festivals, there will always be something new for you to experience.

Explore safety in Sydney at unsw.to/sydney-safety

Enjoy student activities

Dive into your passions with Arc@UNSW, which offers more than 330 student clubs and societies. Enjoy year-round events, sports, volunteering opportunities, health and wellness sessions, and more.

Make friends at arc.unsw.edu.au



✓ UNSW Art & Design
10 minutes by bus

↗ Sydney City
20 minutes by light rail

↘ Sydney Airport
20 minutes by car

↘ UNSW Canberra
3 hours by car



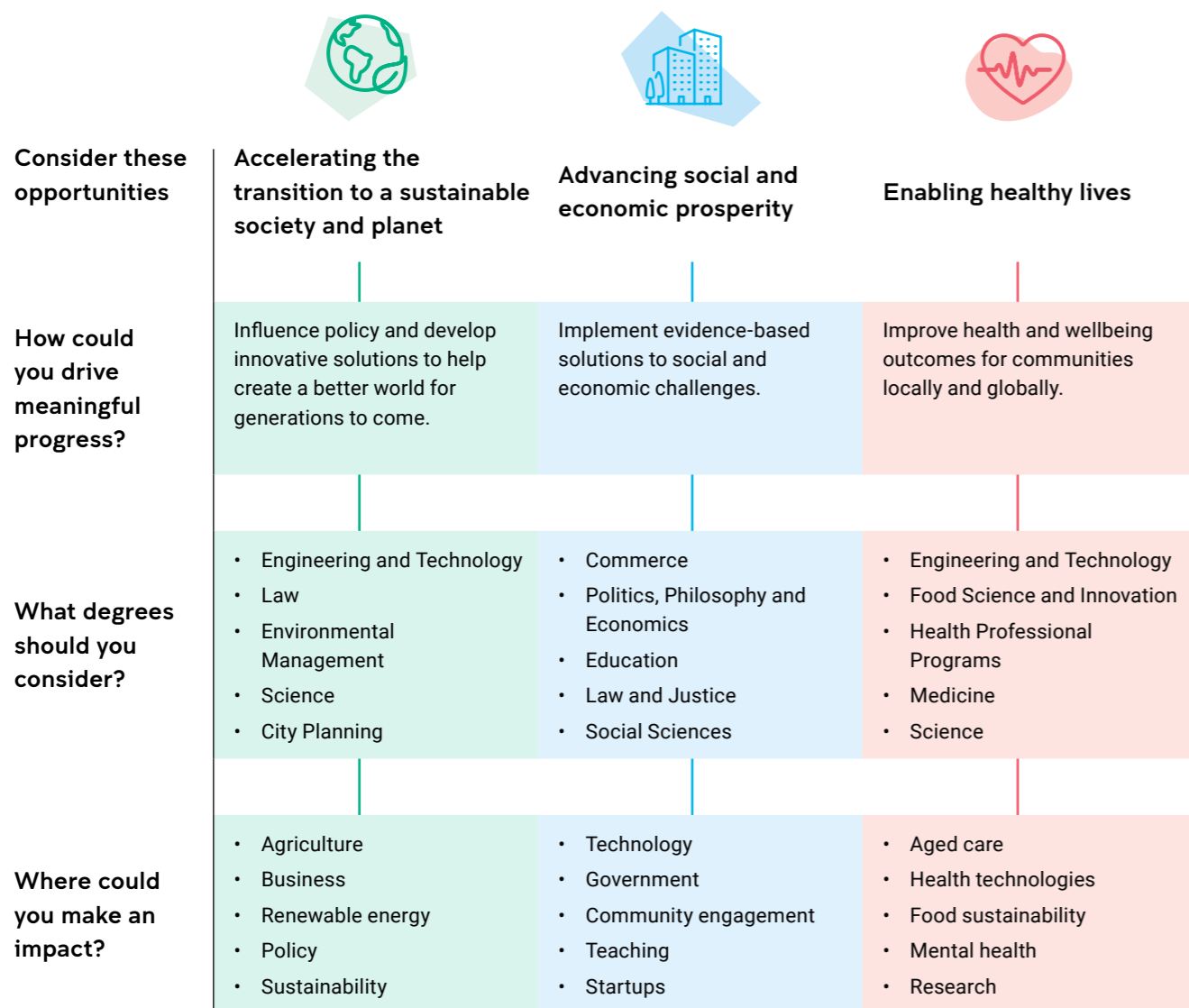
➡ Coogee Beach
8 minutes by bus

↙ UNSW College
5-minute walk

➡ Randwick Shopping Complex
3 minutes by light rail

Choosing the right degree starts here

We have hundreds of degrees and double degree combinations that will equip you with the skills and experience to drive societal impact. Discover how the world's biggest challenges could be your biggest opportunities.



> Find the degree that fits

Need more inspiration or want to find out which degrees are right for you? Take our two-minute quiz to discover the degrees that best suit you. Visit unsw.to/degree-quiz



Strengthening communities and building connectedness

Foster inclusive communities and champion social justice.

- Arts
- Criminology and Criminal Justice
- Law
- Psychology
- Social Work

- Law
- Policy
- Criminal justice
- Education
- Consulting



I believe social work should not be about 'fixing problems', but about recognising what is already strong and supporting people to take control of their own stories and pathways. That vision, inspired first by family, is what brought me into this field and continues to guide my practice today.

In my role, the core focus is supporting Aboriginal and Torres Strait Islander children, young people and families to feel safe, heard and empowered in their interactions with systems like the Department of Communities and Justice, the justice system, education, mental health and legal services.

It's about creating spaces where people feel seen, heard and supported. For me, moments like this are what makes social work more than a career: they make it a responsibility and a privilege.

— **Keely-Che Cain**

Bachelor of Social Work (Honours) graduate
Social Worker at Aboriginal Legal Service |
Co-Founder & Facilitator at Warranggal Baawaa

Arts, Design & Architecture

Learn with industry leaders across the built environment, education, social work, humanities and social sciences, and design, fine arts and media. From shaping future cities to supporting communities and exploring culture and creativity, you will thrive in a supportive community and graduate ready to improve life on Earth.

> Visit unsw.to/ada



Top five in Australia

Architecture and Built Environment, Arts and Humanities, Social Sciences, and Art and Design.

QS World University Rankings by Subject, 2026



Gain experience through Work Integrated Learning

Every degree integrates hands-on experience through internships, professional placements and real-life projects set by industry.



ADA Skills Passport

Prepare for your future career with the ADA Skills Passport, which helps you identify, develop and articulate the employable skills gained through your studies and practical learning. Learn more at unsw.to/skillspassport.

Arts, Design & Architecture

Program	Program code	CRICOS code	Duration (years)	Intake/s	Indicative 2026 year 1 tuition fee (\$A)	English (IELTS*)
Undergraduate^{^^}						
Bachelor of Architectural Studies*	3261	061903M	3	Feb/Sep	52,000	6.5 (6.0)
Bachelor of Arts*	3409	001916C	3	Feb/May/Sep	51,000	6.5 (6.0)
Bachelor of Arts/Education (Secondary)#	4053	075262B	4	Feb/Sep	49,000	7.0 (7.5 in L/S, 6.5 in R/W)
Bachelor of City Planning (Hons)#	3362	088837E	4	Feb	51,000	6.5 (6.0)
Bachelor of Commerce/Education (Secondary)#	3462	077869K	4	Feb/Sep	55,000	7.0 (7.5 in L/S, 6.5 in R/W)
Bachelor of Construction Management and Property*	3332	088764F	3	Feb/Sep	51,000	6.5 (6.0)
Bachelor of Design*	4825	110651E	3	Feb/May/Sep	49,500	6.5 (6.0)
Bachelor of Design/Education (Secondary)#	4067	110686E	4	Feb/Sep	48,500	7.0 (7.5 in L/S, 6.5 in R/W)
Bachelor of Design/Media	3342	110676G	4	Feb/May/Sep	47,500	6.5 (6.0)
Bachelor of Economics/Education (Secondary)#	4058	075094B	4	Feb/Sep	54,000	7.0 (7.5 in L/S, 6.5 in R/W)
Bachelor of Education (Primary) (Hons)#	4071	113669D	4	Feb	50,000	7.5 (8.0 in L/S, 7.0 in R/W)
Bachelor of Fine Arts*	4830	110652D	3	Feb/May/Sep	49,000	6.5 (6.0)
Bachelor of Fine Arts/Arts	4831	110688C	4	Feb/May/Sep	48,500	6.5 (6.0)
Bachelor of Fine Arts/Education (Secondary)#	4068	110687D	4	Feb/Sep	48,500	7.0 (7.5 in L/S, 6.5 in R/W)
Bachelor of Fine Arts/Media	3343	110677F	4	Feb/May/Sep	47,500	6.5 (6.0)
Bachelor of Interior Architecture (Hons)	3256	088833J	4	Feb/Sep	51,000	6.5 (6.0)
Bachelor of Landscape Architecture (Hons)	3381	089363D	4	Feb	50,500	6.5 (6.0)
Bachelor of Media*	3341	110658J	3	Feb/May/Sep	49,000	6.5 (6.0)
Bachelor of Media/Arts	3344	110753K	4	Feb/May/Sep	49,000	6.5 (6.0)
Bachelor of Media/Social Sciences	3345	110678E	4	Feb/May/Sep	48,500	6.5 (6.0)
Bachelor of Politics, Philosophy and Economics*	3478	098376B	3	Feb/Sep	51,000	6.5 (6.0)
Bachelor of Science/Education (Secondary)#	4076	075263A	4	Feb/Sep	58,000	7.0 (7.5 in L/S, 6.5 in R/W)
Bachelor of Social Sciences*	3325	110657K	3	Feb/May/Sep	52,000	6.5 (6.0)
Bachelor of Social Work (Hons)#	4033	000831E	4	Feb/May	50,000	7.0 (7.0)
Bachelor of Social Work (Hons)/Arts#	4045	074888J	5.7	Feb/May	52,000	7.0 (7.0)
Bachelor of Social Work (Hons)/Criminology and Criminal Justice#	4034	082207F	5	Feb/May	47,500	7.0 (7.0)
Bachelor of Social Work (Hons)/Social Sciences#	4046	110659H	5	Feb/May	50,000	7.0 (7.0)
Postgraduate						
Graduate Certificate in Animation and Visual Effects	7319	113672J	0.7	Feb/May/Sep	24,500	6.5 (6.0)
Graduate Diploma in Animation and Visual Effects	5319	113671K	1	Feb/May/Sep	48,500	6.5 (6.0)
Master of Animation and Visual Effects	9319	113670M	2	Feb/May/Sep	48,500	6.5 (6.0)
Master of Applied Linguistics	8236	083248M	2	Feb/May/Sep	47,000	6.5 (6.0)
Master of Architecture	8143	061906G	2	Feb/Sep	48,500	6.5 (6.0)
Master of Architecture/Property and Development	8144	113667F	3	Feb/Sep	49,000	6.5 (6.0)
Master of Arts and Social Sciences (Combined)	8224	065349M	2	Feb/Sep	48,000	6.5 (6.0)

For further details, refer to 'Understanding the entry tables key and notes' on page 27.

Arts, Design & Architecture

Program	Program code	CRICOS code	Duration (years)	Intake/s	Indicative 2026 year 1 tuition fee (\$A)	English (IELTS*)
Graduate Certificate in City Planning	7148	088357K	0.7	Feb/Sep	24,500	6.5 (6.0)
Graduate Diploma in City Planning	5148	088356M	1	Feb/Sep	49,000	6.5 (6.0)
Master of City Planning	8148	088355A	2	Feb/Sep	49,000	6.5 (6.0)
Master of Construction Project Management	8121	085910C	1.7	Feb/Sep	49,000	6.5 (6.0)
Master of Construction Project Management/Property and Development	8318	102395E	2–2.4	Feb/May/Sep	49,000	6.5 (6.0)
Graduate Certificate in Cultural Leadership	7318	082203K	0.7	Feb/May/Sep	24,500	6.5 (6.0)
Graduate Diploma in Cultural Leadership	5312	082202M	1	Feb/May/Sep	48,500	6.5 (6.0)
Master of Curating and Cultural Leadership	9318	082201A	2	Feb/May/Sep	48,500	6.5 (6.0)
Graduate Certificate in Design	7306	082200B	0.7	Feb/May/Sep	24,500	6.5 (6.0)
Graduate Diploma in Design	5306	082199A	1	Feb/May/Sep	48,500	6.5 (6.0)
Master of Design	9313	082198B	2	Feb/May/Sep	48,500	6.5 (6.0)
Master of Development Studies	8942	083236D	2	Feb/Sep	47,000	6.5 (6.0)
Graduate Certificate in Education	7401	082792F	0.7	Feb/May/Sep	23,500	6.5 (6.0)
Master of Education	8913	110653C	1–2	Feb/May/Sep	47,000	6.5 (6.0)
Graduate Certificate in Educational Leadership	7960	068874K	0.7	Feb/May/Sep	23,500	6.5 (6.0)
Master of Educational Leadership	8963	110654B	1–2	Feb/May/Sep	47,000	6.5 (6.0)
Graduate Certificate in Environmental Management	7339	033884G	0.7	Feb/May/Sep	26,500	6.5 (6.0)
Graduate Diploma in Environmental Management	5499	033894F	1	Feb/May/Sep	52,000	6.5 (6.0)
Master of Environmental Management	8623	080063M	1–2	Feb/May/Sep	51,500	6.5 (6.0)
Master of International Relations	8233	083232G	2	Feb/Sep	47,000	6.5 (6.0)
Master of Interpreting	8202	083233G	1.7	Feb/May/Sep	49,500	6.5 (6.0)
Master of Journalism and Communication	8232	083249K	1–2	Feb/May/Sep	50,000	6.5 (6.0)
Master of Landscape Architecture	8136	094952G	1–2	Feb/Sep	49,000	6.5 (6.0)
Master of Property and Development	8127	055094A	1.7	Feb/Sep	49,000	6.5 (6.0)
Master of Public Relations and Advertising	8281	083245C	1–2	Feb/May/Sep	51,000	6.5 (6.0)
Master of Public Relations and Advertising/Design	8234	094951G	3	Feb/May/Sep	50,000	6.5 (6.0)
Master of Public Policy and Governance	8259	083243E	2	Feb/Sep	47,500	6.5 (6.0)
Graduate Certificate in Simulation and Immersive Technologies	7323	099994A	0.7	Feb/Sep	24,500	6.5 (6.0)
Master of Simulation and Immersive Technologies	9323	099986A	1.7	Feb/Sep	49,000	6.5 (6.0)
Master of Teaching (Primary)*	8925	099104G	1.3	Feb	47,000	7.5 (8.0 in L/S, 7.0 in R/W)
Master of Teaching (Secondary)*	8926	073442C	1.3	Feb	47,000	7.5 (8.0 in L/S, 7.0 in R/W)
Master of Translation	8203	083234F	1.7	Feb/May/Sep	49,500	6.5 (6.0)
Graduate Certificate in Translation and Interpreting	7204	106116G	0.7	Feb/Sep	25,000	6.5 (6.0)
Graduate Diploma in Translation and Interpreting	5203	106115H	1	Feb/Sep	49,500	6.5 (6.0)
Master of Translation and Interpreting	8204	083246B	2	Feb/May/Sep	49,500	6.5 (6.0)

For further details, refer to 'Understanding the entry tables key and notes' on page 27.

Business

With a career-focused business education, you will develop the adaptive thinking needed to thrive in our rapidly evolving world. Graduate as a confident leader ready to hit the ground running anywhere in the world.

➤ Visit unsw.to/business



#1 business school in Sydney

#1 in Sydney for Business and Management and Marketing, and #29 globally for Accounting and Finance.

QS World University Rankings by Subject, 2026



Fast-track your goals with Career Accelerator

Grow your career from day one with our exclusive professional development program. Access opportunities and industry networks tailored to your career goals.



AACSB and EQUIS accredited

Expand your horizons with an internationally accredited business school that offers electives, practicums and exchange programs. Gain a global perspective that is invaluable in today's business world.

Business

Program	Program code	CRICOS code	Duration (years)	Intake/s	Indicative 2026 year 1 tuition fee (\$A)	English (IELTS [®])
Undergraduate^{^^}						
Bachelor of Actuarial Studies*	3586	077428B	3	Feb/May/Sep	58,000	7.0 (6.0)
Bachelor of Actuarial Studies/Commerce	3155	080469M	4	Feb/May/Sep	57,500	7.0 (6.0)
Bachelor of Actuarial Studies/Computer Science	3674	0101083	4	Feb/May/Sep	59,500	7.0(6.0)
Bachelor of Actuarial Studies/Economics	3588	077867A	4	Feb/May/Sep	58,000	7.0 (6.0)
Bachelor of Actuarial Studies/Information Systems	3671	0101081	4	Feb/May/Sep	58,500	7.0 (6.0)
Bachelor of Actuarial Studies/Science	3154	080474C	4	Feb/May/Sep	58,500	7.0 (6.0)
Bachelor of Actuarial Studies/Science (Advanced Mathematics) (Hons)	3589	088858M	5	Feb/May/Sep	59,000	7.0 (6.0)
Bachelor of Commerce*	3502	001919M	3	Feb/May/Sep	56,500	7.0 (6.0)
Bachelor of Commerce (International)	3558	058736C	4	Feb/May/Sep	56,500	7.0 (6.0)
Bachelor of Commerce/Advanced Science (Hons)	3593	088854D	5	Feb/May/Sep	60,000	7.0 (6.0)
Bachelor of Commerce/Arts	3573	074885A	4	Feb/May/Sep	56,000	7.0 (6.0)
Bachelor of Commerce/Aviation (Management)	3835	080470G	4	Feb/May/Sep	58,500	7.0 (6.0)
Bachelor of Commerce/Computer Science	3784	080282M	4	Feb/May/Sep	59,500	7.0 (6.0)
Bachelor of Commerce/Design	3597	110679D	4	Feb/May/Sep	52,500	7.0 (6.0)
Bachelor of Commerce/Economics	3521	056687A	4	Feb/May/Sep	56,500	7.0 (6.0)
Bachelor of Commerce/Fine Arts	3599	110682J	4	Feb/May/Sep	53,000	7.0 (6.0)
Bachelor of Commerce/Information Systems	3584	068783B	4	Feb/May/Sep	56,500	7.0 (6.0)
Bachelor of Commerce/Media	3598	110680M	4	Feb/May/Sep	54,000	7.0 (6.0)
Bachelor of Commerce/Science	3529	030479A	4	Feb/May/Sep	59,000	7.0 (6.0)
Bachelor of Economics*	3543	001920G	3	Feb/May/Sep	56,500	7.0 (6.0)
Bachelor of Economics/Advanced Science (Hons)	3566	088859K	5	Feb/May/Sep	56,500	7.0 (6.0)
Bachelor of Economics/Arts	3574	074886M	4	Feb/May/Sep	54,500	7.0 (6.0)
Bachelor of Economics/Computer Science	3673	0101073	4	Feb/May/Sep	59,000	7.0 (6.0)
Bachelor of Economics/Science	3563	077430G	4	Feb/May/Sep	58,500	7.0 (6.0)
Bachelor of Economics/Science (Advanced Mathematics) (Hons)	3564	088860F	5	Feb/May/Sep	59,000	7.0 (6.0)
Bachelor of Information Systems	3979	068782C	3	Feb/May/Sep	56,500	7.0 (6.0)
Bachelor of Information Systems/Computer Science	3795	116103G	4	Feb/May/Sep	56,000	7.0 (6.0)
Bachelor of Science (Advanced Mathematics) (Hons)/Commerce	3523	088857A	5	Feb/May/Sep	59,500	7.0 (6.0)

For further details, refer to 'Understanding the entry tables key and notes' on page 27.

Business

Program	Program code	CRICOS code	Duration (years)	Intake/s	Indicative 2026 year 1 tuition fee (\$A)	English (IELTS [®])
Postgraduate						
Master of Actuarial Studies	8411	051222G	1.7	Feb/May/Sep	62,000	7.0 (6.0)
Master of Actuarial Studies (Extension)	8416	068778K	2	Feb/May/Sep	62,000	7.0 (6.0)
Master of Applied Economics	8429	102633G	1-2	Feb/Sep	62,000	7.0 (6.0)
Master of Business Administration	8351	106822C	1	Feb	87,500	7.0 (6.0)
Master of Business Administration (Extension)*	8359	109016J	2	Feb	87,500	7.0 (6.0)
Graduate Certificate in Commerce	7355	055630D	0.7	Feb/May/Sep	31,000	7.0 (6.0)
Master of Commerce	8404	000933K	1.7	Feb/May/Sep	62,000	7.0 (6.0)
Master of Commerce (Extension)	8417	056227G	2	Feb/May/Sep	62,000	7.0 (6.0)
Graduate Certificate in Economics	7412	080476A	0.7	Feb/Sep	31,000	7.0 (6.0)
Master of Economics	8412	055189E	1	Feb	62,000	7.0 (6.0)
Master of Finance	8476	116979K	1-2	Feb/May/Sep	62,000	7.0 (6.0)
Master of Financial Analysis	8413	058933J	1	Feb/May/Sep	62,000	7.0 (6.0)
Master of International Business	8371	078546K	2	Feb/May/Sep	62,000	7.0 (6.0)
Master of Professional Accounting	8409	051221J	1.7	Feb/May/Sep	62,000	7.0 (6.0)
Master of Professional Accounting (Extension)**	8415	055635K	2	Feb/May/Sep	62,000	7.0 (6.0)
Graduate Diploma in Social Impact	5357	0101074	1	Feb/May/Sep	62,000	7.0 (6.0)
Master of Taxation	9250	015849E	1-1.3	Feb/May/Sep	62,000	7.0 (6.0)

For further details, refer to 'Understanding the entry tables key and notes' on page 27.



Being part of a diverse student community [at the UNSW Business School] broadened my perspective, enhanced my adaptability, sharpened my critical thinking and helped shape my international career.

–

Ma Angeliz Kylin Arciga
Master of Commerce (International Business and Risk Management)

Engineering

Challenge yourself at the engineering faculty that offers the widest range of specialisations in Australia. Join a diverse community that fosters fearless thinking, creativity and collaboration to engineer solutions for a better world. Gain industry experience and graduate job-ready.

> Visit unsw.to/engineering



#1 engineering and technology faculty in Australia

Our world-class programs are consistently ranked in the top five in Australia and top 50 globally.

QS World University Rankings by Subject, 2026



Engineer your future through industry experience

Put your knowledge to work with Engineering Professional Practice. Complete 60 days of industry training through internships, co-curricular or extracurricular experiences.



Create impact through the Challenging program

Step into project-based learning where students, academics and industry collaborate to solve real challenges. Build in-demand technical skills and the soft skills to lead in a changing world.



Engineering

Program	Program code	CRICOS code	Duration (years)	Intake/s	Indicative 2026 year 1 tuition fee (\$A)	English (IELTS [®])
Undergraduate^{^^}						
Bachelor of Advanced Computer Science (Hons)	3779	111284D	4	Feb/May/Sep	61,000	6.5 (6.0)
Bachelor of Science (Computer Science)	3778	015784F	3	Feb/May/Sep	61,000	6.5 (6.0)
Bachelor of Science (Computer Science)/Arts	3783	052229D	4	Feb/May/Sep	55,500	6.5 (6.0)
Bachelor of Science (Computer Science)/Fine Arts	3792	110683H	4	Feb/May/Sep	57,000	6.5 (6.0)
Bachelor of Science (Computer Science)/Science	3789	048749C	4	Feb/May/Sep	61,500	6.5 (6.0)
Bachelor of Cyber Security (Sydney)	3777	119744E	3	Feb	60,000	6.5 (6.0)
Bachelor of Engineering (Hons) [#]	3707	056835E	4	Feb/May/Sep	61,500	6.5 (6.0)
Bachelor of Engineering (Hons)/Arts [#]	3961	074891C	5.7	Feb/May/Sep	57,000	6.5 (6.0)
Bachelor of Engineering (Hons)/Commerce [#]	3764	053195A	5.7	Feb/Sep	60,500	7.0 (6.0)
Bachelor of Engineering (Hons)/Computer Science [#]	3785	085916G	5	Feb/May/Sep	61,500	6.5 (6.0)
Bachelor of Engineering (Hons)/Engineering Science [#]	3773	087947G	5	Feb/May/Sep	60,000	6.5 (6.0)
Bachelor of Engineering (Hons)/Fine Arts [#]	3793	110669F	5.7	Feb/May/Sep	57,000	6.5 (6.0)
Bachelor of Engineering (Hons)/Master of Biomedical Engineering [#]	3768	085911B	5	Feb/May/Sep	62,000	6.5 (6.0)
Bachelor of Engineering (Hons)/Master of Engineering (Electrical Engineering) [#]	3736	088841J	5	Feb/Sep	61,500	6.5 (6.0)
Bachelor of Engineering (Hons)/Science [#]	3767	008727G	5	Feb/May/Sep	62,000	6.5 (6.0)
Bachelor of Engineering (Hons)/Surveying [#]	3776	088839C	5	Feb/May/Sep	62,000	6.5 (6.0)
Bachelor of Food Science (Hons)	3061	001881J	4	Feb/May/Sep	62,000	6.5 (6.0)
Postgraduate						
Master of Engineering [#]	8621	067604G	2	Feb/May/Sep	61,000	6.5 (6.0)
Graduate Certificate in Engineering Science	7373	113782C	1	Feb/May/Sep	61,000	6.5 (6.0)
Graduate Diploma in Engineering Science	5373	113779J	1.7	Feb/May/Sep	61,000	6.5 (6.0)
Master of Engineering Science	8338	084282A	1–2	Feb/May/Sep	61,000	6.5 (6.0)
Master of Engineering Science/Commerce	8339	108472D	1.5–3	Feb/May/Sep	61,500	7.0 (6.0)
Graduate Certificate in Food Science	7037	113783B	1	Feb/May/Sep	61,000	6.5 (6.0)
Graduate Diploma in Food Science	5036	113780E	1.7	Feb/May/Sep	61,000	6.5 (6.0)
Master of Food Science	8037	084283M	2	Feb/May/Sep	61,000	6.5 (6.0)
Graduate Certificate in Computing	7543	052690E	0.7	Feb/May/Sep	31,500	6.5 (6.0)
Graduate Certificate in Information Technology	7546	113781D	1	Feb/May/Sep	63,000	6.5 (6.0)
Graduate Diploma in Information Technology	5546	113778K	1.7	Feb/May/Sep	63,000	6.5 (6.0)
Master of Information Technology ^{^^}	8543	061294J	2	Feb/May/Sep	63,000	6.5 (6.0)
Master of Information Technology/Commerce	8544	108473C	1.7–3	Feb/May/Sep	62,500	7.0 (6.0)
Graduate Certificate in Mining Engineering	7335	108475A	0.7	Feb/Sep	30,500	6.5 (6.0)
Graduate Diploma in Mining Engineering	5335	084281B	1	Feb/Sep	61,000	6.5 (6.0)
Master of Mining Engineering	8335	084284K	1.7	Feb/Sep	61,000	6.5 (6.0)

For further details, refer to 'Understanding the entry tables key and notes' on page 27.

Law & Justice

Immerse yourself in the real-world application of law and justice. Be driven by an ethos of justice for all, contribute to community cases and graduate with the experience and conviction needed to lead positive change.

> Visit unsw.to/law-justice



#1 law faculty in Sydney

Ranked #13 in the world and #1 in Sydney for law and legal studies.

QS World University Rankings by Subject, 2026



Careers service and real-world legal practice

Navigate your professional path with exclusive career support. Refine skills like mooted and negotiation in seminar-style classes and apply what you learn at our on-campus community legal centre.



End-to-end legal education

Complete your academic and practical training in one place. We offer Practical Legal Training (PLT), which is the final step to becoming a practising lawyer in Australia, allowing you to apply to the Supreme Court straight after graduation.

Law & Justice

Program	Program code	CRICOS code	Duration (years)	Intake/s	Indicative 2026 year 1 tuition fee (\$A)	English (IELTS [®])
Undergraduate^{^^}						
Bachelor of Actuarial Studies/Laws	4737	082787C	5	Feb/Sep	57,500	7.0 (6.0)
Bachelor of Advanced Science (Hons)/Laws	3997	088861E	6	Feb	57,000	7.0 (6.0)
Bachelor of Arts/Laws	4782	005947G	5	Feb	52,500	7.0 (6.0)
Bachelor of City Planning (Hons)/Laws	4706	090701C	6.7	Feb	53,000	7.0 (6.0)
Bachelor of Commerce/Laws	4733	005946J	5	Feb/Sep	56,500	7.0 (6.0)
Bachelor of Criminology and Criminal Justice*	3422	038415G	3	Feb/May/Sep	50,500	6.5 (6.0)
Bachelor of Criminology and Criminal Justice/Laws	4763	059028A	5	Feb	51,000	7.0 (6.0)
Bachelor of Criminology and Criminal Justice/ Psychological Science	3799	116901K	4	Feb/Sep	49,500	6.5 (6.0)
Bachelor of Criminology and Criminal Justice/ Psychology (Hons)	3798	116902J	5	Feb	49,500	6.5 (6.0)
Bachelor of Data Science and Decisions/Laws	4795	099873K	5.7	Feb	57,000	7.0 (6.0)
Bachelor of Economics/Laws	4744	009531M	5	Feb/Sep	56,500	7.0 (6.0)
Bachelor of Engineering (Hons)/Laws*	3765	074890D	6.7	Feb	58,500	7.0 (6.0)
Bachelor of Fine Arts/Laws	4877	110674J	5	Feb	50,500	7.0 (6.0)
Bachelor of Media/Laws	4875	110672M	5	Feb	53,000	7.0 (6.0)
Bachelor of Medicinal Chemistry (Hons)/Laws	4755	088863C	6.7	Feb	56,000	7.0 (6.0)
Bachelor of Politics, Philosophy and Economics/Laws	4797	099869F	6	Feb	53,000	7.0 (6.0)
Bachelor of Psychological Science/Laws	4722	088765E	5	Feb	61,000	7.0 (6.0)
Bachelor of Psychology (Hons)/Laws	4721	088835G	6	Feb	60,500	7.0 (6.0)
Bachelor of Science (Advanced Mathematics) (Hons)/Laws	3998	088862D	6	Feb	56,000	7.0 (6.0)
Bachelor of Science/Laws	4770	015779C	5	Feb	60,500	7.0 (6.0)
Bachelor of Science (Computer Science)/Laws	3786	070768E	5	Feb	59,500	7.0 (6.0)
Bachelor of Social Sciences/Laws	4873	110660D	5	Feb	51,500	7.0 (6.0)
Bachelor of Social Work (Hons)/Laws	4787	074887K	6.7	Feb	52,000	7.0 (7.0)
Postgraduate						
Juris Doctor	9150	068850G	3	Feb/Sep	60,500	7.0 (6.0)
Master of Laws ^{^^}	9201	000733G	1	Feb/May/Sep	59,000	7.0 (6.0)
Graduate Diploma in Legal Professional Practice (PLT) ^{#~}	5213	n/a	0.5	Feb/Sep	16,000	7.0 (6.0)

For further details, refer to 'Understanding the entry tables key and notes' on page 27.

Medicine & Health

Join a community that is working to enable healthy lives for all. Gain hands-on clinical training in Australia's largest hospitals and graduate ready to lead health innovation.

> Visit unsw.to/medicine-health



Top five medical faculty

Ranked in the top five for medicine in Australia and #54 globally for Life Sciences and Medicine.

QS World University Rankings by Subject, 2026



Hands-on clinical training

Build confidence through clinical training that allows you to interact with patients and health professionals. Plus, access valuable internships and placement opportunities.



Innovative health precincts

Learn at Australia's most advanced health precincts, including the UNSW Health Translation Hub, where education, research and industry professionals collaborate to solve local and global problems.



Medicine & Health

Program	Program code	CRICOS code	Duration (years)	Intake/s	Indicative 2026 year 1 tuition fee (\$A)	English (IELTS [®])
Undergraduate^{^^}						
Bachelor of Applied Exercise Science/Master of Clinical Exercise Physiology	3897	110656M	4.4	Feb	63,500	7.0 (6.0)
Bachelor of Exercise Science/Master of Physiotherapy and Exercise Physiology	3896	109399M	5	Feb	64,000	7.0 (6.0)
Bachelor of Medical Studies/Doctor of Medicine	3805	077423G	6	Feb	95,500	7.0 (6.0)
Bachelor of Nutrition/Master of Dietetics and Food Innovation	3894	109397B	5	Feb	63,000	7.0 (7.0)
Bachelor of Pharmaceutical Medicine/Master of Pharmacy	3895	109398A	5	Feb	63,000	7.0 (6.0)
Bachelor of Vision Science	3181	092962K	3	Feb	62,500	6.5 (6.0)
Bachelor of Vision Science/Master of Clinical Optometry	3182	092960A	5	Feb	63,000	6.5 (6.0)
Postgraduate						
Graduate Certificate in Global Health	7367	068959E	0.7	Feb/May/Sep	30,500	6.5 (6.0)
Graduate Diploma in Global Health	5567	068958F	0.8-1	Feb/May/Sep	45,500	6.5 (6.0)
Master of Global Health	9048	068957G	1	Feb/May/Sep	60,500	6.5 (6.0)
Master of Global Health/Public Health	9043	068960A	1.7	Feb/May/Sep	60,500	6.5 (6.0)
Master of Global Health/Public Health (Extension)	9054	089838G	2	Feb/May/Sep	60,500	6.5 (6.0)
Master of Global Health (Extension)	9051	089221G	1.7	Feb/May/Sep	60,500	6.5 (6.0)
Master of Global Health (Extension)/Health Leadership and Management	9053	089837G	2	Feb/May/Sep	60,500	6.5 (6.0)
Master of Global Health (Extension)/Public Health	9052	089846G	2	Feb/May/Sep	60,500	6.5 (6.0)
Graduate Certificate in Health Data Science	7372	096227J	0.7	Feb/Sep	26,000	6.5 (6.0)
Graduate Diploma in Health Data Science	5372	096226K	1	Feb/Sep	51,500	6.5 (6.0)
Master of Science in Health Data Science	9372	096225M	1.7	Feb/Sep	52,000	6.5 (6.0)
Master of Science in Health Data Science (Extension)	9373	110655A	2	Feb/Sep	52,000	6.5 (6.0)
Graduate Certificate in Health Leadership and Management	7360	015016B	0.7	Feb/May/Sep	30,500	6.5 (6.0)
Graduate Diploma in Health Leadership and Management	5509	061249C	0.8-1	Feb/May/Sep	45,500	6.5 (6.0)
Master of Health Leadership and Management	8901	059315E	1	Feb/May/Sep	60,500	6.5 (6.0)
Master of Health Leadership and Management (Extension)	8902	059316D	1.7	Feb/May/Sep	60,500	6.5 (6.0)
Master of Health Leadership and Management/Global Health	9044	068961M	1.7	Feb/May/Sep	60,500	6.5 (6.0)
Master of Health Leadership and Management/Infectious Diseases Intelligence	9041	096230C	1.7	Feb/May/Sep	60,500	6.5 (6.0)
Master of Health Leadership and Management/Public Health	9047	061598D	1.7	Feb/May/Sep	60,500	6.5 (6.0)
Master of Health Leadership and Management/Public Health (Extension)	9056	089839F	2	Feb/May/Sep	60,500	6.5 (6.0)

For further details, refer to 'Understanding the entry tables key and notes' on page 27.

Medicine & Health

Program	Program code	CRICOS code	Duration (years)	Intake/s	Indicative 2026 year 1 tuition fee (\$A)	English (IELTS*)
Graduate Certificate in Infectious Diseases Intelligence	7362	0100357	0.7	Feb/May/Sep	30,500	6.5 (6.0)
Graduate Diploma in Infectious Diseases Intelligence	5362	0100356	0.8-1	Feb/May/Sep	45,500	6.5 (6.0)
Master of Infectious Diseases Intelligence	8362	089223E	1	Feb/May/Sep	60,500	6.5 (6.0)
Master of Infectious Diseases Intelligence/ Global Health	9042	096229G	1.7	Feb/May/Sep	60,500	6.5 (6.0)
Master of Infectious Diseases Intelligence/ Global Health (Extension)	9367	0100682	2	Feb/May/Sep	60,500	6.5 (6.0)
Master of Infectious Diseases Intelligence (Extension)	9362	0100677	1.7	Feb/May/Sep	60,500	6.5 (6.0)
Master of Infectious Diseases Intelligence (Extension)/Health Leadership and Management	9365	0100680	2	Feb/May/Sep	60,500	6.5 (6.0)
Graduate Certificate in Public Health	7368	028076E	0.7	Feb/May/Sep	30,500	6.5 (6.0)
Graduate Diploma in Public Health	5507	028073G	0.7-1	Feb/May/Sep	45,500	6.5 (6.0)
Master of Public Health	9045	008969M	1	Feb/May/Sep	60,500	6.5 (6.0)
Master of Public Health/Health Leadership and Management (Extension)	9057	089844J	2	Feb/May/Sep	60,500	6.5 (6.0)
Master of Public Health/ Infectious Diseases Intelligence	9059	096231B	1.7	Feb/May/Sep	60,500	6.5 (6.0)
Master of Public Health (Extension)	9046	061597E	1.7	Feb/May/Sep	60,500	6.5 (6.0)
Master of Public Health (Extension)/ Infectious Diseases Intelligence	9366	0100681	2	Feb/May/Sep	60,500	6.5 (6.0)

For further details, refer to 'Understanding the entry tables key and notes' on page 27.



My time at UNSW was a rewarding moment in life where I grew very independent in decision-making, shaping my professional career focus and being accepting of differences.

Chanchamnap Sok

Master of Public Health graduate
Program Coordinator at the Australia-Cambodia Cooperation for Equitable Sustainable Services program

Science

Think big and deepen your connection with the world through practical training, internships and global exchange opportunities that bring learning to life. You will graduate with the confidence to transform ideas into tangible outcomes.

> Visit unsw.to/science



World's top 50

Nine subjects ranked in the global top 50.

QS World University Rankings by Subject, 2026



Industry experience

Develop in-demand skills through Work Integrated Learning and Research Integrated Learning. Access state-of-the-art facilities and 400+ industry and research partners to launch your future-ready career.



Make your mark

Get involved in your choice of 16 science societies, join inclusion programs like Women in STEM, and boost your employability through peer mentoring, our STEM Career Launchpad and SciConnect tool.



Science

Program	Program code	CRICOS code	Duration (years)	Intake/s	Indicative 2026 year 1 tuition fee (\$A)	English (IELTS [^])
Undergraduate^{^^}						
Bachelor of Advanced Science (Hons)	3962	088842G	4	Feb/May/Sep	61,500	6.5 (6.0)
Bachelor of Advanced Science (Hons)/Arts	3948	088877G	5	Feb/May/Sep	55,000	6.5 (6.0)
Bachelor of Advanced Science (Hons)/Engineering (Hons) [#]	3762	088866M	6	Feb/Sep	62,000	6.5 (6.0)
Bachelor of Advanced Science (Hons)/Fine Arts	3922	110670B	5	Feb/May/Sep	60,500	6.5 (6.0)
Bachelor of Advanced Science (Hons)/Science (Computer Science)	3782	088867K	5	Feb/May/Sep	62,000	6.5 (6.0)
Bachelor of Advanced Science (Hons)/Social Sciences	3924	110671A	5	Feb/May/Sep	60,500	6.5 (6.0)
Bachelor of Aviation (Flying)	3980	017227G	3	Feb	62,500	6.5 (6.0)
Bachelor of Aviation (Management)	3981	018567B	3	Feb/May/Sep	61,000	6.5 (6.0)
Bachelor of Aviation (Remotely Piloted Aircraft Systems) ^{**}	3928	114591B	3	Feb	62,500	6.5 (6.0)
Bachelor of Biotechnology (Hons)	3053	088871C	4	Feb/May/Sep	61,500	6.5 (6.0)
Bachelor of Data Science and Decisions	3959	093085J	3	Feb/May/Sep	60,000	6.5 (6.0)
Bachelor of Engineering (Hons) (Materials Science and Engineering) [#]	3131	088873A	4	Feb/May/Sep	62,000	6.5 (6.0)
Bachelor of Engineering (Hons) (Materials Science and Engineering)/Commerce [#]	3134	088870D	5.7	Feb/May/Sep	61,500	7.0 (6.0)
Bachelor of Engineering (Hons)(Materials Science and Engineering)/Engineering Science [#]	3132	089471M	5	Feb/May/Sep	62,500	6.5 (6.0)
Bachelor of Engineering (Hons)(Materials Science and Engineering)/Master of Biomedical Engineering [#]	3133	088840K	5	Feb/May/Sep	62,000	6.5 (6.0)
Bachelor of Environmental Management [*]	3965	080468A	3	Feb/May/Sep	60,500	6.5 (6.0)
Bachelor of Environmental Management/Arts	3955	081121J	4.7	Feb/May/Sep	62,000	6.5 (6.0)
Bachelor of Medical Science [*]	3991	030459E	3	Feb	62,500	6.5 (6.0)
Bachelor of Medicinal Chemistry (Hons)	3999	088848B	4	Feb/May/Sep	61,500	6.5 (6.0)
Bachelor of Psychological Science [*]	3435	072206A	3	Feb/Sep	58,500	6.5 (6.0)
Bachelor of Psychology (Hons)	3632	088874M	4	Feb	61,000	6.5 (6.0)
Bachelor of Science [*]	3970	015780K	3	Feb/May/Sep	61,000	6.5 (6.0)
Bachelor of Science/Arts	3947	015787C	4	Feb/May/Sep	55,500	6.5 (6.0)
Bachelor of Science/Fine Arts	3921	110684G	4	Feb/May/Sep	60,000	6.5 (6.0)
Bachelor of Science/Social Sciences	3923	110685F	4	Feb/May/Sep	61,500	6.5 (6.0)
Bachelor of Science (Advanced Mathematics) (Hons)	3956	088843G	4	Feb/May/Sep	61,000	6.5 (6.0)
Bachelor of Science (Advanced Mathematics) (Hons)/Arts	3949	088875K	5	Feb/May/Sep	62,500	6.5 (6.0)
Bachelor of Science (Advanced Mathematics) (Hons)/Engineering (Hons) [#]	3761	088864B	6	Feb/Sep	62,000	6.5 (6.0)
Bachelor of Science (Advanced Mathematics) (Hons)/Science (Computer Science)	3781	088865A	5	Feb/May/Sep	62,000	6.5 (6.0)

For further details, refer to 'Understanding the entry tables key and notes' on page 27.

Science

Program	Program code	CRICOS code	Duration (years)	Intake/s	Indicative 2026 year 1 tuition fee (\$A)	English (IELTS [^])
Postgraduate						
Master of Clinical Neuropsychology [#]	8266	114034J	1	Feb	58,500	7.0 (7.0)
Graduate Certificate in Data Science and Decisions	7959	0100702	0.7	Feb/Sep	31,000	6.5 (6.0)
Graduate Diploma in Data Science and Decisions	5959	0100703	1	Feb/Sep	61,000	6.5 (6.0)
Master of Data Science and Decisions	8959	0101866	2	Feb/Sep	62,000	6.5 (6.0)
Master of Financial Mathematics	8161	058739M	1.7	Feb	60,500	6.5 (6.0)
Master of Marine Science and Management	8271	085467F	1.7	Feb/Sep	59,000	6.5 (6.0)
Master of Materials Technology	8717	085912A	2	Feb/May/Sep	60,000	6.5 (6.0)
Master of Mathematics	8719	080059G	1.7	Feb/May/Sep	60,500	6.5 (6.0)
Graduate Certificate in Mathematics and Statistics	7659	056230A	0.7	Feb/Sep	30,000	6.5 (6.0)
Graduate Diploma in Mathematics and Statistics	5659	028077D	1	Feb/May/Sep	60,000	6.5 (6.0)
Graduate Diploma in Physical Oceanography	5518	106117F	1	Feb/May/Sep	60,000	6.5 (6.0)
Master of Physical Oceanography	8518	106823B	1.7	Feb/May/Sep	60,000	6.5 (6.0)
Master of Psychology (Clinical) [#]	8256	001934A	2	Feb	58,500	7.0 (7.0)
Master of Psychology (Forensic) [#]	8257	028068E	2	Feb	58,500	7.0 (7.0)
Graduate Diploma in Science (Research)	5304	081526K	1	Feb/May/Sep	60,000	6.5 (6.0)
Master of Statistics	8750	001008F	1.7	Feb/May/Sep	60,500	6.5 (6.0)

For further details, refer to 'Understanding the entry tables key and notes' below.

Understanding the entry tables key and notes

The program tables published on pages 13 to 27 outline the minimum entry requirements for students commencing in 2026. This information is provided as a guide only, and actual entry requirements may be higher or lower than those indicated. The fees displayed are indicative only. Actual fees are calculated per unit of credit based on each student's study choices, and total costs may vary accordingly. Fees for 2027 will be released in late 2026. For more information, refer to page 30 or visit unsw.to/international-fees. In all cases, admission will be determined upon receipt of an application. The University reserves the right to amend entry requirements without notice.

Key to the tables

[^] English (IELTS): International English Language Testing System – Academic version. The first score listed is the overall score; the score in brackets is the minimum score required in each section (L = Listening, R = Reading, S = Speaking, W = Writing).

^{^^} Offers for this program are assessed in grouped offer rounds. All applications submitted within the application period for that grouped offer round will be ranked by academic merit and offers will be made to the top-ranked applicants.

^{*} An extra honours year is available for this program.

^{**} This program includes components delivered in partnership with certified providers. Check program-specific information at unsw.to/degrees.

[#] This program has compulsory Work Integrated Learning components.

[~] International students are not eligible for an Australian student visa for this program.

Start your journey

Gain a global perspective at a university that will transform your ambition into career success – so you can move forward with confidence, make your mark and create a better future for all.

> Step 1

Find your degree

Explore our 400+ degree and double degree options at unsw.to/degrees and make a note of the program code.

> Step 2

Check the entry requirements

You need to meet both the academic and English language requirements for your desired degree to study at UNSW.

Academic entry requirements

We accept a number of secondary/tertiary education qualifications, including those awarded for:

- high school studies (for undergraduate programs) and undergraduate studies (for postgraduate programs)
- UNSW College pathway programs
- recognised prior study
- university transfer.

Find out more at unsw.to/accepted-qualifications

English language requirements

If English is not your first language, you need to provide proof of English proficiency. Learn more at unsw.to/english-requirements.

Assumed knowledge

Our degrees do not have formal subject prerequisites, but they do have 'assumed knowledge' to ensure a strong start in your first year. If you do not have the assumed knowledge, it will not prevent us from making you an offer; however, we strongly recommend you take a bridging course to set yourself up for success. Learn more at unsw.to/assumed-knowledge.



> Step 3

Submit your application

Apply as early as possible. This will give you the best chance of securing your desired degree and allow time for visa and travel arrangements.

Submit your application at applyonline.unsw.edu.au or reach out to our friendly staff in your region for guidance. Find your local UNSW staff member at unsw.to/international-staff.

> Step 4

Accept your offer

We will notify you of the outcome of your application via email. Offers to study at UNSW Sydney are made in specific offer rounds.

Understand our latest admission policies and check offer round dates at unsw.to/international-admissions.



> Learn more about the application process at unsw.to/apply-international-students

Higher Degree Research

UNSW is one of the world's leading research universities, renowned for pioneering work and global impact. When you join, you become an essential part of the community and have access to world-class facilities and supervision from leading experts. We have a vast portfolio of interdisciplinary research with talent and capabilities in clean energy, climate resilience, emerging technologies, health science and public policy.

All UNSW faculties offer Higher Degree Research (HDR) programs, including a Doctor of Philosophy (PhD). Additional HDR programs, such as the Professional Doctorate, Master by Research and Master of Philosophy, are offered through specific faculties.

HDR candidates can apply their research in collaboration with a range of industry partners. This includes small to medium enterprises, entrepreneurs, investors, policymakers, community and non-governmental organisations.

> Learn more at unsw.to/hdr

Applying for a Higher Degree Research program

The application process for HDR programs is different from coursework programs. In addition to meeting the eligibility criteria, you need to contact a potential supervisor and receive their agreement to supervise you. Find a supervisor at unsw.to/find-a-supervisor.

As part of your application, you need to outline your plan to address a specific issue by completing a Research Plan form. Read the full application process and download the Research Plan form at unsw.to/apply-hdr.

Your coursework study schedule*

Our 3+ (trimester) calendar has three 10-week terms each year, commencing in February, May and September, with an optional summer term each January. From 2028, we will transition to an enhanced flex-semester calendar, featuring two 12-week semesters with a mid-semester break, alongside optional six-week summer and winter terms for greater flexibility. Understand our new flex-semester calendar at unsw.to/calendar.

Both calendars allow you to choose how you structure your studies, meaning you can prioritise:

- gaining industry experience through Work Integrated Learning
- accelerating your degree
- creating time for extracurricular activities and work
- studying abroad.

> Learn more at unsw.to/terms

*Higher Degree Research programs have their own academic calendar. Visit unsw.to/hdr-calendar.



Let's connect



Our in-country staff are ready to answer questions in your language. Find your regional experts at unsw.to/international-staff.

Our Future Student Advisers in Sydney are also here to support you.

☎ +61 2 9385 1844 (10am–4pm, Sydney time)

📍 unsw.to/contact



Global top 20

QS World University Rankings, 2024–2026



#1 in Australia for employment outcomes

QS World University Rankings, 2026



Highest median graduate salaries of Go8 universities

QILT Graduate Outcomes Survey (medium-term), 2024